

SBP2 antibody, Internal

Cat. No. GTX89253

Host	Goat
Clonality	Polyclonal
Isotype	IgG
Applications	WB, ICC/IF, IHC-P, IP
Reactivity	Human, Mouse

Package
100 µg

Applications

Application Note

*Optimal dilutions/concentrations should be determined by the researcher.

Suggested dilution	Recommended dilution
WB	0.1-0.3µg/ml
ICC/IF	Assay dependent
IHC-P	3µg/ml
IP	Assay dependent

Note : Human Testis shows granular cytoplasm staining in Leydig cells.

Not tested in other applications.

Calculated MW 95 kDa. ([Note](#))

Properties

Form	Liquid
Buffer	TBS, 0.5% BSA
Preservative	0.02% Sodium azide
Storage	Store as concentrated solution. Centrifuge briefly prior to opening vial. For short-term storage (1-2 weeks), store at 4°C. For long-term storage, aliquot and store at -20°C or below. Avoid multiple freeze-thaw cycles.
Concentration	0.50 mg/ml (Please refer to the vial label for the specific concentration.)
Immunogen	Peptide with sequence C-KERQERKQRLQEN, from the internal region of the protein sequence according to NP_076982.3.
Purification	Purified by ammonium sulphate precipitation followed by antigen affinity chromatography
Conjugation	Unconjugated



For full product information, images and publications, please visit our [website](#).

For laboratory research use only. Not for any clinical, therapeutic, or diagnostic use in humans or animals. Not for animal or human consumption.

Note

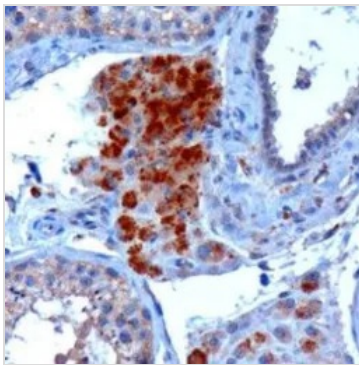
Purchasers shall not, and agree not to enable third parties to, analyze, copy, reverse engineer or otherwise attempt to determine the structure or sequence of the product.

DATA IMAGES



GTx89253 WB Image

WB analysis of HFF cell lysate with B) 100nM siRNA or A) control siRNA using GTx89253 SBP2 antibody, Internal.



GTx89253 IHC-P Image

IHC-P analysis of human testis using GTx89253 SBP2 antibody, Internal.

Antigen retrieval : Tris/EDTA buffer pH 9

Dilution : 3µg/ml



For full product information, images and publications, please visit our [website](#).