

Von Hippel Lindau antibody, Internal

Cat. No. GTX89268

Host	Goat
Clonality	Polyclonal
Isotype	IgG
Application	WB, IHC-P, ELISA, Sandwich ELISA
Reactivity	Human, Mouse, Rat

Reference (1)

Package

100 µg

APPLICATION

Application Note

*Optimal dilutions/concentrations should be determined by the researcher.

Suggested dilution	Recommended dilution
WB	0.01-0.03µg/ml
IHC-P	5µg/ml
ELISA	Assay dependent
Sandwich ELISA	Assay dependent

Not tested in other applications.

Calculated MW 24 kDa. ([Note](#))

Product Note This antibody is expected to recognise both reported isoforms (NP_000542.1 and NP_937799.1).

PROPERTIES

Form	Liquid
Buffer	TBS, 0.5% BSA
Preservative	0.02% Sodium azide
Storage	Store as concentrated solution. Centrifuge briefly prior to opening vial. For short-term storage (1-2 weeks), store at 4°C. For long-term storage, aliquot and store at -20°C or below. Avoid multiple freeze-thaw cycles.
Concentration	0.50 mg/ml (Please refer to the vial label for the specific concentration.)
Immunogen	Peptide with sequence C-RSLVKPENYRRILD, from the internal region of the protein sequence according to NP_000542.1; NP_937799.1.
Purification	Purified by ammonium sulphate precipitation followed by antigen affinity chromatography
Conjugation	Unconjugated



For full product information, images and publications, please visit our [website](#).

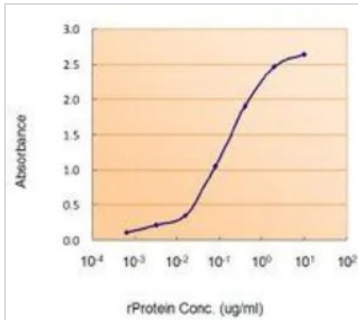
Date 2024 / 05 / 03 Page 1 of 2

For laboratory research use only. Not for any clinical, therapeutic, or diagnostic use in humans or animals. Not for animal or human consumption.

Note

Purchasers shall not, and agree not to enable third parties to, analyze, copy, reverse engineer or otherwise attempt to determine the structure or sequence of the product.

DATA IMAGES

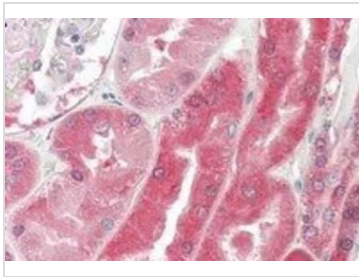


GTX89268 ELISA Image

ELISA analysis of Von Hippel Lindau protein using GTX89268 Von Hippel Lindau antibody, Internal.

Capture : GTX101087 (2.5µg/ml)

Detection : GTX89268 (1.5µg/ml)

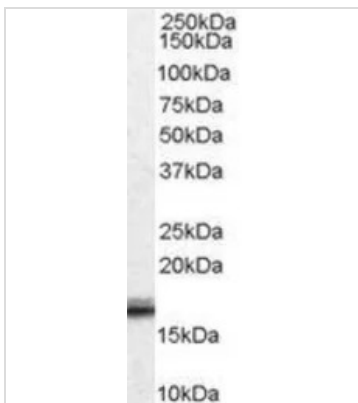


GTX89268 IHC-P Image

IHC-P analysis of human kidney using GTX89268 Von Hippel Lindau antibody, Internal.

Antigen retrieval : citrate buffer pH 6

Dilution : 5µg/ml



GTX89268 WB Image

WB analysis of human ovary lysate using GTX89268 Von Hippel Lindau antibody, Internal.

Dilution : 0.01µg/ml

Loading : 35µg protein in RIPA buffer



For full product information, images and publications, please visit our [website](https://www.genetex.com).