

## COMT antibody, Internal

Cat. No. GTX89277

Host	Goat
Clonality	Polyclonal
Isotype	IgG
Applications	WB, IHC-P, ELISA, Sandwich ELISA
Reactivity	Human

Package  
100 µg

## Applications

## Application Note

\*Optimal dilutions/concentrations should be determined by the researcher.

Suggested dilution	Recommended dilution
WB	0.03-0.1 µg/ml
IHC-P	3.75 µg/ml
ELISA	Assay dependent
Sandwich ELISA	Assay dependent

**Note : Human Brain (Cerebellum) shows staining of processes coming from the edge of the granular zone into the molecular layer.**

Not tested in other applications.

**Calculated MW** 30 kDa. ( [Note](#) )

**Product Note** This antibody is expected to recognise both reported isoforms (NP\_000745.1 and NP\_009294.1)

## Properties

Form	Liquid
Buffer	TBS, 0.5% BSA
Preservative	0.02% Sodium azide
Storage	Store as concentrated solution. Centrifuge briefly prior to opening vial. For short-term storage (1-2 weeks), store at 4°C. For long-term storage, aliquot and store at -20°C or below. Avoid multiple freeze-thaw cycles.
Concentration	0.50 mg/ml (Please refer to the vial label for the specific concentration.)
Immunogen	Peptide with sequence C-QDIIPLKKKYDVD, from the internal region of the protein sequence according to NP_000745.1; NP_009294.1.
Purification	Purified by ammonium sulphate precipitation followed by antigen affinity chromatography
Conjugation	Unconjugated



For full product information, images and publications, please visit our [website](#).

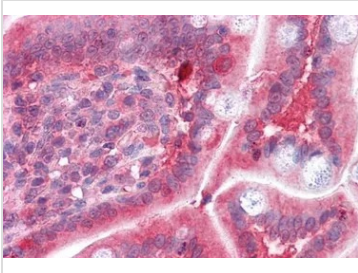
Date 2026 / 01 / 30 Page 1 of 2

For laboratory research use only. Not for any clinical, therapeutic, or diagnostic use in humans or animals. Not for animal or human consumption.

## Note

Purchasers shall not, and agree not to enable third parties to, analyze, copy, reverse engineer or otherwise attempt to determine the structure or sequence of the product.

## DATA IMAGES

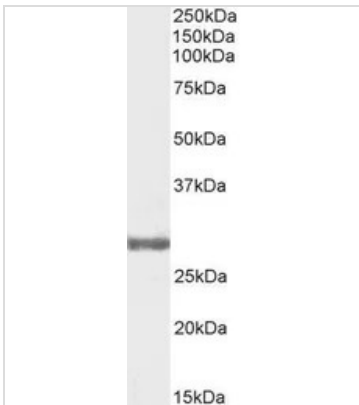


### GTX89277 IHC-P Image

IHC-P analysis of human small intestine using GTX89277 COMT antibody, Internal.

Antigen retrieval : citrate buffer pH 6

Dilution : 3.75µg/ml

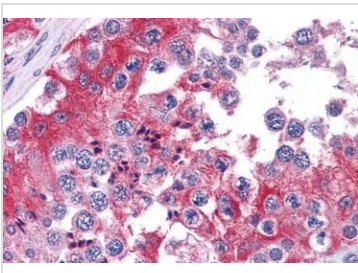


### GTX89277 WB Image

WB analysis of human testis lysate using GTX89277 COMT antibody, Internal.

Dilution : 0.3µg/ml

Loading : 35µg protein in RIPA buffer

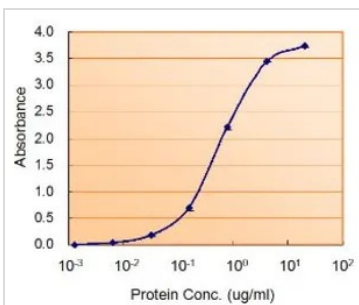


### GTX89277 IHC-P Image

IHC-P analysis of human testis using GTX89277 COMT antibody, Internal.

Antigen retrieval : citrate buffer pH 6

Dilution : 3.75µg/ml



### GTX89277 ELISA Image

ELISA analysis of COMT protein using GTX89277 COMT antibody, Internal.

**Capture :** GTX101233 (2.5µg/ml)

**Detection :** GTX89277 (0.5µg/ml)



For full product information, images and publications, please visit our [website](#).