

## LEF1 antibody, Internal

Cat. No. GTX89284

Host	Goat
Clonality	Polyclonal
Isotype	IgG
Applications	WB, ICC/IF, FCM
Reactivity	Human

Package  
100 µg

## Applications

## Application Note

\*Optimal dilutions/concentrations should be determined by the researcher.

Suggested dilution	Recommended dilution
WB	1-3µg/ml
ICC/IF	Assay dependent
FCM	Assay dependent

Not tested in other applications.

Calculated MW 44 kDa. ( [Note](#) )

## Properties

Form	Liquid
Buffer	TBS, 0.5% BSA
Preservative	0.02% Sodium azide
Storage	Store as concentrated solution. Centrifuge briefly prior to opening vial. For short-term storage (1-2 weeks), store at 4°C. For long-term storage, aliquot and store at -20°C or below. Avoid multiple freeze-thaw cycles.
Concentration	0.50 mg/ml (Please refer to the vial label for the specific concentration.)
Immunogen	Peptide with sequence C-QHEQRKEQEPKRPH, from the internal region of the protein sequence according to NP_057353.1.
Purification	Purified by ammonium sulphate precipitation followed by antigen affinity chromatography
Conjugation	Unconjugated

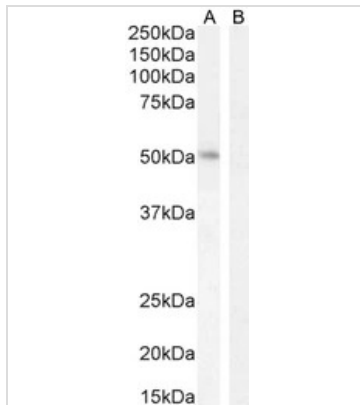
## Note

For laboratory research use only. Not for any clinical, therapeutic, or diagnostic use in humans or animals. Not for animal or human consumption.

Purchasers shall not, and agree not to enable third parties to, analyze, copy, reverse engineer or otherwise attempt to determine the structure or sequence of the product.



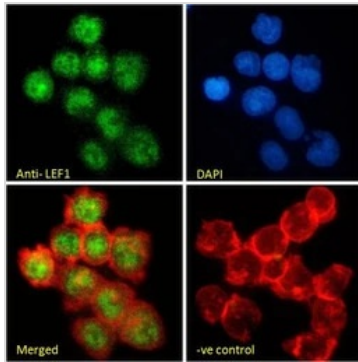
For full product information, images and publications, please visit our [website](#).

**DATA IMAGES**

**GTx89284 WB Image**

WB analysis of K562 nuclear extracts using GTx89284 LEF1 antibody, Internal pre-incubated with (Lane B) or without (Lane A) immunogen peptide.

Dilution : 2µg/ml

Loading : 35µg protein in RIPA buffer

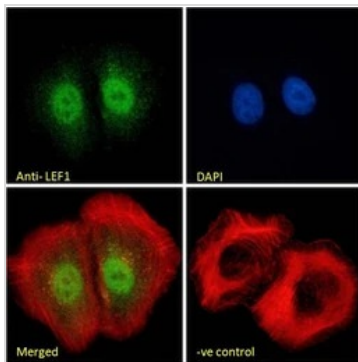

**GTx89284 ICC/IF Image**

ICC/IF analysis of PFA-fixed Jurkat cells using GTx89284 LEF1 antibody, Internal. Actin filaments were stained with phalloidin (red) and the nuclear stain is DAPI (blue).

Negative control (-ve) : Unimmunized goat IgG

Permeabilization : 0.15% Triton

Dilution : 10µg/ml


**GTx89284 ICC/IF Image**

ICC/IF analysis of PFA-fixed U2OS cells using GTx89284 LEF1 antibody, Internal. Actin filaments were stained with phalloidin (red) and the nuclear stain is DAPI (blue).

Negative control (-ve) : Unimmunized goat IgG

Permeabilization : 0.15% Triton

Dilution : 10µg/ml



For full product information, images and publications, please visit our [website](https://www.genetex.com).