

GPX7 antibody, Internal

Cat. No. GTX89305

Host	Goat
Clonality	Polyclonal
Isotype	IgG
Applications	WB, ELISA, Sandwich ELISA
Reactivity	Human

Package
100 µg

Applications

Application Note

*Optimal dilutions/concentrations should be determined by the researcher.

Suggested dilution	Recommended dilution
WB	0.3-1µg/ml
ELISA	Assay dependent
Sandwich ELISA	Assay dependent

Not tested in other applications.

Calculated MW 21 kDa. ([Note](#))

Properties

Form	Liquid
Buffer	TBS, 0.5% BSA
Preservative	0.02% Sodium azide
Storage	Store as concentrated solution. Centrifuge briefly prior to opening vial. For short-term storage (1-2 weeks), store at 4°C. For long-term storage, aliquot and store at -20°C or below. Avoid multiple freeze-thaw cycles.
Concentration	0.50 mg/ml (Please refer to the vial label for the specific concentration.)
Immunogen	Peptide with sequence CNQFGQQEPDSNK, from the internal region of the protein sequence according to NP_056511.2.
Purification	Purified by ammonium sulphate precipitation followed by antigen affinity chromatography
Conjugation	Unconjugated

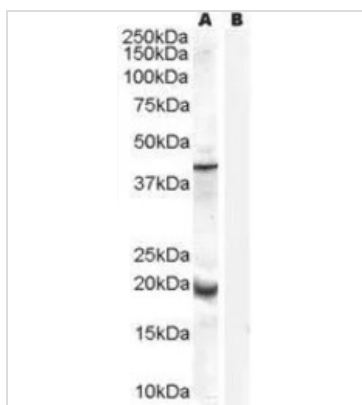
Note

For laboratory research use only. Not for any clinical, therapeutic, or diagnostic use in humans or animals. Not for animal or human consumption.

Purchasers shall not, and agree not to enable third parties to, analyze, copy, reverse engineer or otherwise attempt to determine the structure or sequence of the product.



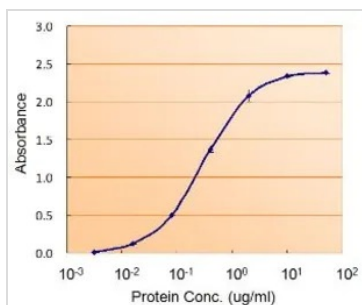
For full product information, images and publications, please visit our [website](#).

DATA IMAGES

GTX89305 WB Image

WB analysis of human prostate lysate with (B) and without (A) blocking with the immunising peptide using GTX89305 GPX7 antibody, Internal.

Dilution : 0.3µg/ml

Loading : 35µg protein in RIPA buffer


GTX89305 ELISA Image

ELISA analysis of GPX7 protein using GTX89305 GPX7 antibody, Internal.

Capture : GTX105683 (5µg/ml)

Detection : GTX89305 (5µg/ml)



For full product information, images and publications, please visit our [website](#).