

## NCAM2 antibody, C-term

Cat. No. GTX89311

Host	Goat
Clonality	Polyclonal
Isotype	IgG
Applications	WB, ICC/IF, IHC-P, IHC-Fr
Reactivity	Human, Mouse

References ( 3 )

Package

100 µg

## Applications

## Application Note

\*Optimal dilutions/concentrations should be determined by the researcher.

Suggested dilution	Recommended dilution
WB	Assay dependent
ICC/IF	Assay dependent
IHC-P	Assay dependent
IHC-Fr	0.5-3.75µg/ml

**Note : Frozen section of Olfactory bulb from transcardially PFA-perfused Mouse shows strong staining of axon bundles and moderate peripheral staining outside the glomeruli.**

Not tested in other applications.

**Calculated MW** 93 kDa. ( [Note](#) )

## Properties

Form	Liquid
Buffer	TBS, 0.5% BSA
Preservative	0.02% Sodium azide
Storage	Store as concentrated solution. Centrifuge briefly prior to opening vial. For short-term storage (1-2 weeks), store at 4°C. For long-term storage, aliquot and store at -20°C or below. Avoid multiple freeze-thaw cycles.
Concentration	0.50 mg/ml (Please refer to the vial label for the specific concentration.)
Immunogen	Peptide with sequence C-KVSNDIIQSKEDDSK, from the C Terminus of the protein sequence according to NP_004531.2.
Purification	Purified by ammonium sulphate precipitation followed by antigen affinity chromatography
Conjugation	Unconjugated

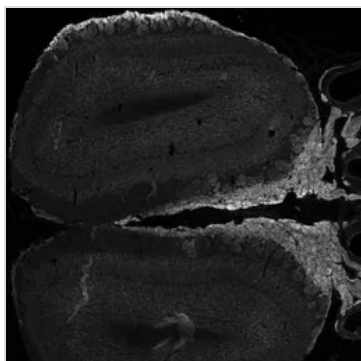


For full product information, images and publications, please visit our [website](#).

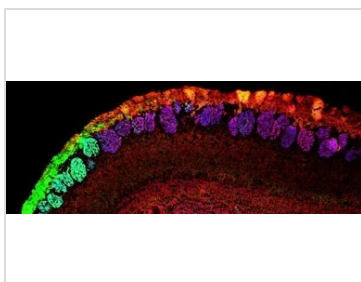
For laboratory research use only. Not for any clinical, therapeutic, or diagnostic use in humans or animals. Not for animal or human consumption.

**Note**

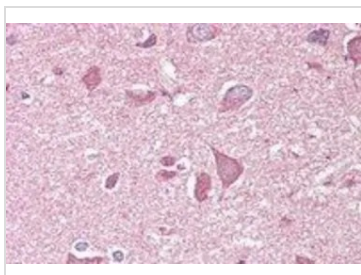
Purchasers shall not, and agree not to enable third parties to, analyze, copy, reverse engineer or otherwise attempt to determine the structure or sequence of the product.

**DATA IMAGES**

**GTX89311 IHC-Fr Image**

IHC-Fr analysis of PFA-perfused mouse Olfactory bulb using GTX89311 NCAM2 antibody, C-term.  
Antigen retrieval : methanol (-20C, 10min) followed by 1% SDS(10min)  
Dilution : 0.5µg/ml


**GTX89311 IHC-Fr Image**

IHC-Fr analysis of PFA-perfused mouse Olfactory bulb using GTX89311 NCAM2 antibody, C-term.  
Red : NCAM2  
Blue : VGLUT2  
Green : NQO1  
Antigen retrieval : citrate buffer pH 6 at 95°C for 10min  
Dilution : 0.5µg/ml


**GTX89311 IHC-P Image**

IHC-P analysis of human cortex using GTX89311 NCAM2 antibody, C-term.  
Antigen retrieval : citrate buffer pH 6  
Dilution : 3.75µg/ml



For full product information, images and publications, please visit our [website](#).