

Hamartin / TSC1 antibody

Cat. No. GTX89366

Host	Goat
Clonality	Polyclonal
Isotype	IgG
Application	WB, IHC-P
Reactivity	Human

Package
100 µg

APPLICATION

Application Note

*Optimal dilutions/concentrations should be determined by the researcher.

Suggested dilution	Recommended dilution
WB	0.1-0.3µg/ml
IHC-P	3-6µg/ml

Note : Human Uterus shows membranous staining around non-basal nuclei and at the lumen of the endometrial gland.

Not tested in other applications.

Calculated MW	130 kDa. (Note)
Product Note	This antibody is expected to recognise isoform 1 (NP_000359.1) only.

PROPERTIES

Form	Liquid
Buffer	TBS, 0.5% BSA
Preservative	0.02% Sodium azide
Storage	Store as concentrated solution. Centrifuge briefly prior to opening vial. For short-term storage (1-2 weeks), store at 4°C. For long-term storage, aliquot and store at -20°C or below. Avoid multiple freeze-thaw cycles.
Concentration	0.50 mg/ml (Please refer to the vial label for the specific concentration.)
Immunogen	Peptide with sequence C-QLHIMDYNETHHEH, from the C Terminus of the protein sequence according to NP_000359.1.
Purification	Purified by ammonium sulphate precipitation followed by antigen affinity chromatography
Conjugation	Unconjugated



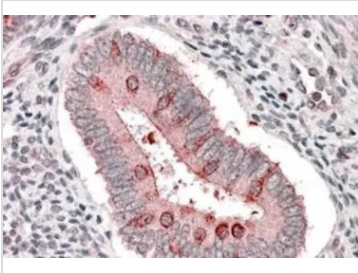
For full product information, images and publications, please visit our [website](#).

Date 2024 / 05 / 17 Page 1 of 2

For laboratory research use only. Not for any clinical, therapeutic, or diagnostic use in humans or animals. Not for animal or human consumption.

Note

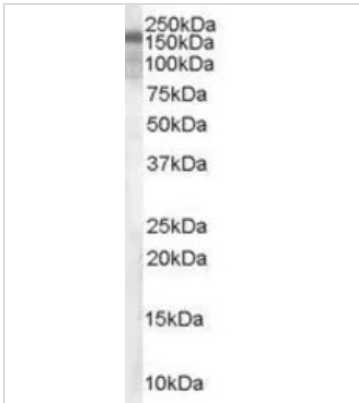
Purchasers shall not, and agree not to enable third parties to, analyze, copy, reverse engineer or otherwise attempt to determine the structure or sequence of the product.

DATA IMAGES

GTX89366 IHC-P Image

IHC-P analysis of human uterus using GTX89366 Hamartin / TSC1 antibody.

Antigen retrieval : citrate buffer pH 6

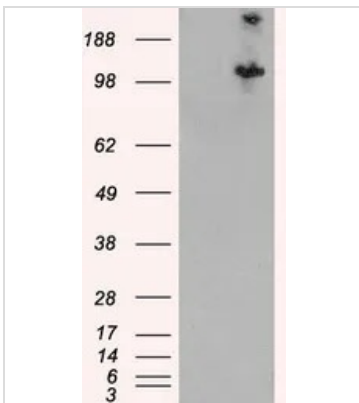
Dilution : 3.8µg/ml


GTX89366 WB Image

WB analysis of human brain lysate using GTX89366 Hamartin / TSC1 antibody.

Dilution : 0.1µg/ml

Loading : 35µg protein in RIPA buffer


GTX89366 WB Image

WB analysis of HEK293 overexpressing human TSC1 (mock transfection in first lane) using GTX89366 Hamartin / TSC1 antibody.



For full product information, images and publications, please visit our [website](https://www.genetex.com).