

# Monoamine Oxidase B antibody, Internal

**Cat. No. GTX89368**

<b>Host</b>	Goat
<b>Clonality</b>	Polyclonal
<b>Isotype</b>	IgG
<b>Applications</b>	WB, IHC-P, ELISA, Sandwich ELISA
<b>Reactivity</b>	Human

**Package**  
100 µg

## Applications

### Application Note

\*Optimal dilutions/concentrations should be determined by the researcher.

Suggested dilution	Recommended dilution
WB	0.5-1.5µg/ml
IHC-P	Assay dependent
ELISA	Assay dependent
Sandwich ELISA	Assay dependent

Not tested in other applications.

**Calculated MW** 59 kDa. ( [Note](#) )

**Product Note** This antibody is not expected to cross-react with MAOA.

## Properties

<b>Form</b>	Liquid
<b>Buffer</b>	TBS, 0.5% BSA
<b>Preservative</b>	0.02% Sodium azide
<b>Storage</b>	Store as concentrated solution. Centrifuge briefly prior to opening vial. For short-term storage (1-2 weeks), store at 4°C. For long-term storage, aliquot and store at -20°C or below. Avoid multiple freeze-thaw cycles.
<b>Concentration</b>	0.50 mg/ml (Please refer to the vial label for the specific concentration.)
<b>Immunogen</b>	Peptide with sequence C-HKARKLARLTKEE, from the internal region of the protein sequence according to NP_000889.3.
<b>Purification</b>	Purified by ammonium sulphate precipitation followed by antigen affinity chromatography
<b>Conjugation</b>	Unconjugated

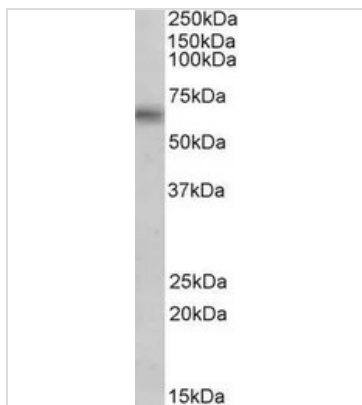


For full product information, images and publications, please visit our [website](#).

For laboratory research use only. Not for any clinical, therapeutic, or diagnostic use in humans or animals. Not for animal or human consumption.

**Note**

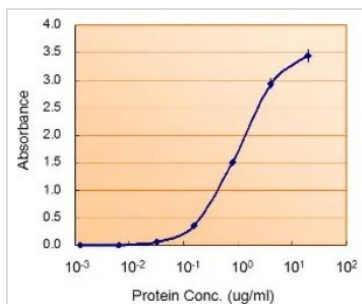
Purchasers shall not, and agree not to enable third parties to, analyze, copy, reverse engineer or otherwise attempt to determine the structure or sequence of the product.

**DATA IMAGES**

**GTX89368 WB Image**

WB analysis of human brain (hippocampus) lysate using GTX89368 Monoamine Oxidase B antibody, Internal.

Dilution : 0.5µg/ml

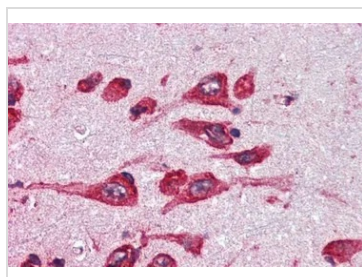
Loading : 35µg protein in RIPA buffer


**GTX89368 ELISA Image**

ELISA analysis of Monoamine Oxidase B protein using GTX89368 Monoamine Oxidase B antibody, Internal.

**Capture** : GTX105970 (2.5µg/ml)

**Detection** : GTX89368 (0.5µg/ml)


**GTX89368 IHC-P Image**

IHC-P analysis of human cortex using GTX89368 Monoamine Oxidase B antibody, Internal.

Antigen retrieval : citrate buffer pH 6

Dilution : 5µg/ml



For full product information, images and publications, please visit our [website](https://www.genetex.com).