

# CYP3A4 antibody, Internal

**Cat. No. GTX89375**

<b>Host</b>	Goat
<b>Clonality</b>	Polyclonal
<b>Isotype</b>	IgG
<b>Applications</b>	ICC/IF, FCM
<b>Reactivity</b>	Human

**Package**  
100 µg

## Applications

### Application Note

\*Optimal dilutions/concentrations should be determined by the researcher.

Suggested dilution	Recommended dilution
ICC/IF	Assay dependent
FCM	Assay dependent

Not tested in other applications.

### Product Note

This antibody is expected to recognise both reported isoforms (NP\_059488.2; NP\_001189784.1) and it is not expected to cross-react with 3A5, 3A7 or 3A43.

## Properties

<b>Form</b>	Liquid
<b>Buffer</b>	TBS, 0.5% BSA
<b>Preservative</b>	0.02% Sodium azide
<b>Storage</b>	Store as concentrated solution. Centrifuge briefly prior to opening vial. For short-term storage (1-2 weeks), store at 4°C. For long-term storage, aliquot and store at -20°C or below. Avoid multiple freeze-thaw cycles.
<b>Concentration</b>	0.50 mg/ml (Please refer to the vial label for the specific concentration.)
<b>Immunogen</b>	Peptide with sequence C-KESRLEDTQKHR, from the internal region of the protein sequence according to NP_059488.2; NP_001189784.1.
<b>Purification</b>	Purified by ammonium sulphate precipitation followed by antigen affinity chromatography
<b>Conjugation</b>	Unconjugated

### Note

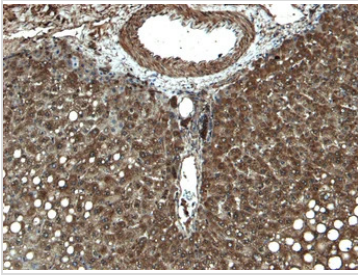
For laboratory research use only. Not for any clinical, therapeutic, or diagnostic use in humans or animals. Not for animal or human consumption.

Purchasers shall not, and agree not to enable third parties to, analyze, copy, reverse engineer or otherwise attempt to determine the structure or sequence of the product.



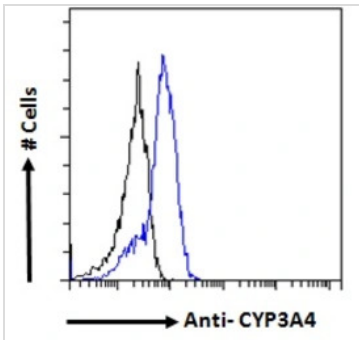
For full product information, images and publications, please visit our [website](#).

## DATA IMAGES



### GTX89375 ICC/IF Image

IHC-P analysis of human liver tissue using GTX89375 CYP3A4 antibody, Internal.  
Antigen retrieval : Heat induced antigen retrieval with citrate buffer pH 6



### GTX89375 FCM Image

FACS analysis of PFA-fixed HepG2 cells using GTX89375 CYP3A4 antibody, Internal.  
Blue : Primary antibody  
Black : Unimmunized goat IgG  
Permeabilization : 0.5% Triton  
Dilution : 10ug/ml



For full product information, images and publications, please visit our [website](https://www.genetex.com).