

ERG antibody, C-term

Cat. No. GTX89421

Host	Goat
Clonality	Polyclonal
Isotype	IgG
Applications	WB, IHC-P
Reactivity	Human

Package
100 µg

Applications

Application Note

*Optimal dilutions/concentrations should be determined by the researcher.

Suggested dilution	Recommended dilution
WB	0.1-0.3µg/ml
IHC-P	Assay dependent

Not tested in other applications.

Calculated MW 55 kDa. ([Note](#))**Product Note** This antibody is expected to recognise all reported isoforms (NP_891548.1; NP_004440.1; NP_001129626.1; NP_001129627.1; NP_001230358.1)

Properties

Form	Liquid
Buffer	TBS, 0.5% BSA
Preservative	0.02% Sodium azide
Storage	Store as concentrated solution. Centrifuge briefly prior to opening vial. For short-term storage (1-2 weeks), store at 4°C. For long-term storage, aliquot and store at -20°C or below. Avoid multiple freeze-thaw cycles.
Concentration	0.50 mg/ml (Please refer to the vial label for the specific concentration.)
Immunogen	Peptide with sequence C-PNTRLPTSHMP SH, from the C Terminus of the protein sequence according to NP_891548.1; NP_004440.1; NP_001129626.1; NP_001129627.1; NP_001230358.1 .
Purification	Purified by ammonium sulphate precipitation followed by antigen affinity chromatography
Conjugation	Unconjugated



For full product information, images and publications, please visit our [website](#).

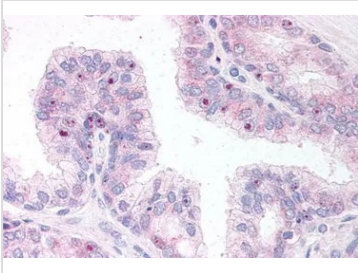
Date 2026 / 01 / 21 Page 1 of 2

For laboratory research use only. Not for any clinical, therapeutic, or diagnostic use in humans or animals. Not for animal or human consumption.

Note

Purchasers shall not, and agree not to enable third parties to, analyze, copy, reverse engineer or otherwise attempt to determine the structure or sequence of the product.

DATA IMAGES

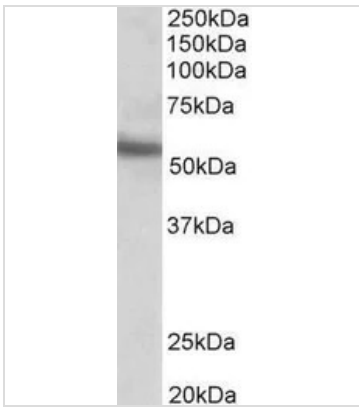


GTX89421 IHC-P Image

IHC-P analysis of human prostate using GTX89421 ERG antibody, C-term.

Antigen retrieval : citrate buffer pH 6

Dilution : 10µg/ml



GTX89421 WB Image

WB analysis of Molt-4 cell lysate using GTX89421 ERG antibody, C-term.

Dilution : 0.1µg/ml

Loading : 35µg protein in RIPA buffer



For full product information, images and publications, please visit our [website](#).