

PDE4D antibody, C-term

Cat. No. GTX89423

Host	Goat
Clonality	Polyclonal
Isotype	IgG
Applications	WB, IHC-P, ELISA
Reactivity	Human

Package
100 µg

Applications

Application Note

*Optimal dilutions/concentrations should be determined by the researcher.

Suggested dilution	Recommended dilution
WB	0.1-0.3µg/ml
IHC-P	5µg/ml
ELISA	Assay dependent

Not tested in other applications.

Calculated MW	91 kDa. (Note)
Product Note	This antibody is expected to recognize all reported isoforms.

Properties

Form	Liquid
Buffer	TBS, 0.5% BSA
Preservative	0.02% Sodium azide
Storage	Store as concentrated solution. Centrifuge briefly prior to opening vial. For short-term storage (1-2 weeks), store at 4°C. For long-term storage, aliquot and store at -20°C or below. Avoid multiple freeze-thaw cycles.
Concentration	0.50 mg/ml (Please refer to the vial label for the specific concentration.)
Immunogen	Peptide with sequence QPEACVIDDRSPDT, from the C Terminus of the protein sequence according to NP_001184151.1; NP_001184150.1; NP_006194.2; NP_001098101.1; NP_001184152.1; NP_001159371.1.
Purification	Purified by ammonium sulphate precipitation followed by antigen affinity chromatography
Conjugation	Unconjugated

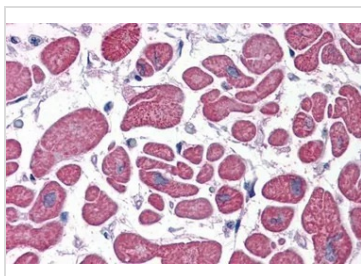
For full product information, images and publications, please visit our [website](#).

For laboratory research use only. Not for any clinical, therapeutic, or diagnostic use in humans or animals. Not for animal or human consumption.

Note

Purchasers shall not, and agree not to enable third parties to, analyze, copy, reverse engineer or otherwise attempt to determine the structure or sequence of the product.

DATA IMAGES

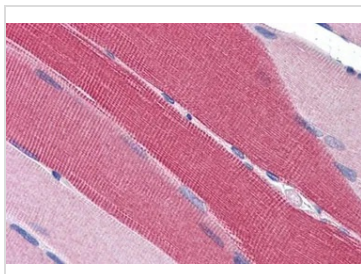


GTx89423 IHC-P Image

IHC-P analysis of human heart using GTx89423 PDE4D antibody, C-term.

Antigen retrieval : citrate buffer pH 6

Dilution : 5µg/ml

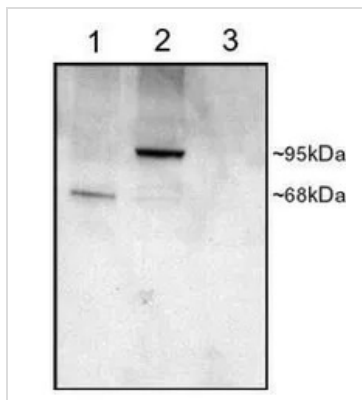


GTx89423 IHC-P Image

IHC-P analysis of human skeletal muscle using GTx89423 PDE4D antibody, C-term.

Antigen retrieval : citrate buffer pH 6

Dilution : 5µg/ml



GTx89423 WB Image

WB analysis of COS cell transfected with human PDE4D1 (1), transfected with human PDE4D3 (2), untransfected (3) using GTx89423 PDE4D antibody, C-term.

Dilution : 1µg/ml

Loading : 25µg



For full product information, images and publications, please visit our [website](https://www.genetex.com).