

# HP1 alpha antibody, Internal

**Cat. No. GTX89432**

<b>Host</b>	Goat
<b>Clonality</b>	Polyclonal
<b>Isotype</b>	IgG
<b>Applications</b>	WB, IHC-P, FCM
<b>Reactivity</b>	Human, Mouse

**Package**  
100 µg

## Applications

### Application Note

\*Optimal dilutions/concentrations should be determined by the researcher.

Suggested dilution	Recommended dilution
WB	0.03-0.1µg/ml
IHC-P	2-4µg/ml
FCM	10µg/ml

**Note : Human Uterus shows nuclear staining in the epithelial cells of the endometrium.**

Not tested in other applications.

**Calculated MW** 22 kDa. ( [Note](#) )

## Properties

<b>Form</b>	Liquid
<b>Buffer</b>	TBS, 0.5% BSA
<b>Preservative</b>	0.02% Sodium azide
<b>Storage</b>	Store as concentrated solution. Centrifuge briefly prior to opening vial. For short-term storage (1-2 weeks), store at 4°C. For long-term storage, aliquot and store at -20°C or below. Avoid multiple freeze-thaw cycles.
<b>Concentration</b>	0.50 mg/ml (Please refer to the vial label for the specific concentration.)
<b>Immunogen</b>	Peptide with sequence C-NKRKSNFSNSADDIK, from the internal region of the protein sequence according to NP_036249.1; NP_001120793.1; NP_001120794.1.
<b>Purification</b>	Purified by ammonium sulphate precipitation followed by antigen affinity chromatography
<b>Conjugation</b>	Unconjugated

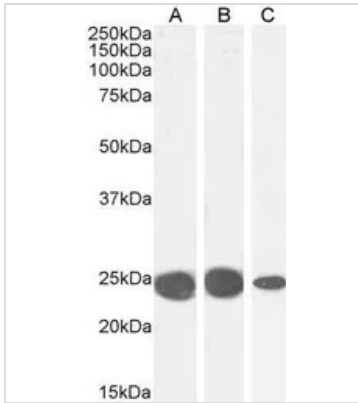


For full product information, images and publications, please visit our [website](#).

For laboratory research use only. Not for any clinical, therapeutic, or diagnostic use in humans or animals. Not for animal or human consumption.

**Note**

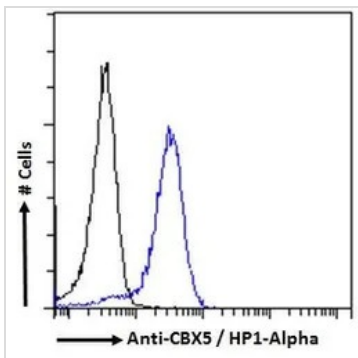
Purchasers shall not, and agree not to enable third parties to, analyze, copy, reverse engineer or otherwise attempt to determine the structure or sequence of the product.

**DATA IMAGES**

**GTx89432 WB Image**

WB analysis of K562 (A), MCF7 (B) and NIH-3T3 (C) cell lysate using GTx89432 HP1 alpha antibody, Internal.

Dilution : 0.1µg/ml

Loading : 35µg protein in RIPA buffer


**GTx89432 FCM Image**

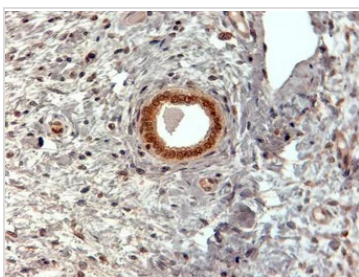
FACS analysis of PFA fixed HeLa cells using GTx89432 HP1 alpha antibody, Internal.

Blue : Primary antibody

Black : Isotype control

Permeabilization : 0.5% Triton

Dilution : 10µg/ml


**GTx89432 IHC-P Image**

IHC-P analysis of human uterus using GTx89432 HP1 alpha antibody, Internal.

Antigen retrieval : citrate buffer pH 6

Dilution : 2µg/ml



For full product information, images and publications, please visit our [website](https://www.genetex.com).