

## BAALC antibody, Internal

Cat. No. GTX89453

Host	Goat
Clonality	Polyclonal
Isotype	IgG
Applications	WB
Reactivity	Human, Mouse

Package  
100 µg

## Applications

## Application Note

\*Optimal dilutions/concentrations should be determined by the researcher.

Suggested dilution	Recommended dilution
WB	0.03-0.1 µg/ml

Not tested in other applications.

**Calculated MW** 19 kDa. ( [Note](#) )

**Product Note** This antibody is expected to recognise isoform 1 (NP\_079088.1) only.

## Properties

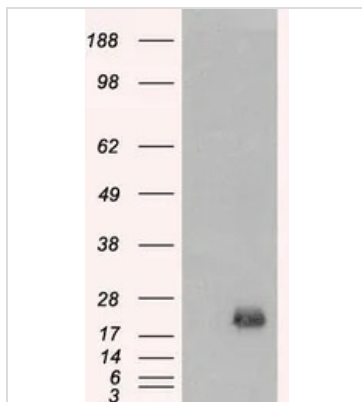
Form	Liquid
Buffer	TBS, 0.5% BSA
Preservative	0.02% Sodium azide
Storage	Store as concentrated solution. Centrifuge briefly prior to opening vial. For short-term storage (1-2 weeks), store at 4°C. For long-term storage, aliquot and store at -20°C or below. Avoid multiple freeze-thaw cycles.
Concentration	0.50 mg/ml (Please refer to the vial label for the specific concentration.)
Immunogen	Peptide with sequence C-KQNGLTTEAKRDAK, from the internal region of the protein sequence according to NP_079088.1.
Purification	Purified by ammonium sulphate precipitation followed by antigen affinity chromatography
Conjugation	Unconjugated

## Note

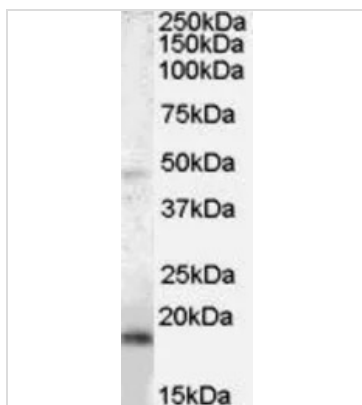
Purchasers shall not, and agree not to enable third parties to, analyze, copy, reverse engineer or otherwise attempt to determine the structure or sequence of the product.



For full product information, images and publications, please visit our [website](#).

**DATA IMAGES**

**GTX89453 WB Image**

WB analysis of HEK293 overexpressing BAALC (mock transfection in first lane) using GTX89453 BAALC antibody, Internal.


**GTX89453 WB Image**

WB analysis of mouse brain lysate using GTX89453 BAALC antibody, Internal.

Dilution : 0.03µg/ml

Loading : 35µg protein in RIPA buffer



For full product information, images and publications, please visit our [website](https://www.genetex.com).