

DARC antibody, N-term

Cat. No. GTX89467

Host	Goat
Clonality	Polyclonal
Isotype	IgG
Applications	WB, IHC-P, FCM
Reactivity	Human

Package
100 µg

Applications

Application Note

*Optimal dilutions/concentrations should be determined by the researcher.

Suggested dilution	Recommended dilution
WB	0.3-1µg/ml
IHC-P	5µg/ml
FCM	10µg/ml

Note : Human Kidney stains epithelial cells of renal tubules and endothelial cells of vessels. The granular staining is compatible with the endoplasmic reticulum association of the protein.

Not tested in other applications.

Calculated MW	36 kDa. (Note)
Product Note	This antibody is expected to recognize both reported isoforms (NP_001116423.1; NP_002027.2).

Properties	
Form	Liquid
Buffer	TBS, 0.5% BSA
Preservative	0.02% Sodium azide
Storage	Store as concentrated solution. Centrifuge briefly prior to opening vial. For short-term storage (1-2 weeks), store at 4°C. For long-term storage, aliquot and store at -20°C or below. Avoid multiple freeze-thaw cycles.
Concentration	0.50 mg/ml (Please refer to the vial label for the specific concentration.)
Immunogen	Peptide with sequence HRAELSPSTENSSQLDFED-C, from the N Terminus of the protein sequence according to NP_001116423.1; NP_002027.2.
Purification	Purified by ammonium sulphate precipitation followed by antigen affinity chromatography
Conjugation	Unconjugated



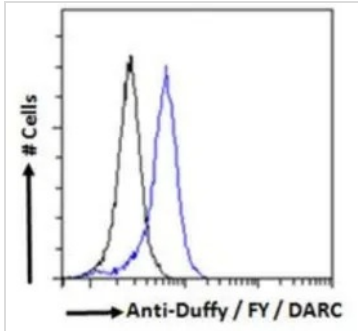
For full product information, images and publications, please visit our [website](#).

For laboratory research use only. Not for any clinical, therapeutic, or diagnostic use in humans or animals. Not for animal or human consumption.

Note

Purchasers shall not, and agree not to enable third parties to, analyze, copy, reverse engineer or otherwise attempt to determine the structure or sequence of the product.

DATA IMAGES



GTX89467 FCM Image

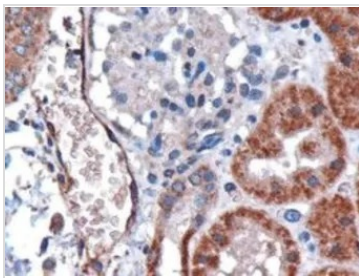
FACS analysis of PFA fixed HEK293 cells using GTX89467 DARC antibody, N-term.

Blue : Primary antibody

Black : Isotype control

Permeabilization : 0.5% Triton

Dilution : 10µg/ml

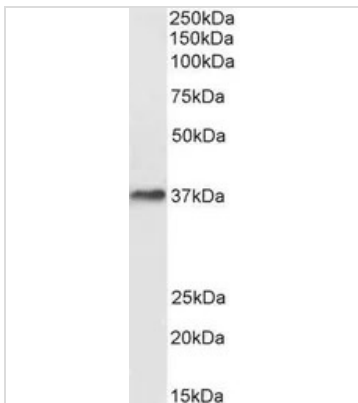


GTX89467 IHC-P Image

IHC-P analysis of human kidney using GTX89467 DARC antibody, N-term.

Antigen retrieval : citrate buffer Ph 6

Dilution : 3µg/ml

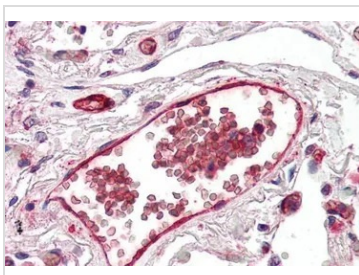


GTX89467 WB Image

WB analysis of human liver lysate using GTX89467 DARC antibody, N-term.

Dilution : 0.3µg/ml

Loading : 35µg protein in RIPA buffer



GTX89467 IHC-P Image

IHC-P analysis of human lung using GTX89467 DARC antibody, N-term.

Antigen retrieval : citrate buffer Ph 6

Dilution : 5µg/ml



For full product information, images and publications, please visit our [website](https://www.genetex.com).