

## GDF15 antibody, C-term

Cat. No. GTX89503

Host	Goat
Clonality	Polyclonal
Isotype	IgG
Applications	WB, IHC-P, FCM
Reactivity	Human

Package  
100 µg

## Applications

## Application Note

\*Optimal dilutions/concentrations should be determined by the researcher.

Suggested dilution	Recommended dilution
WB	0.1-0.3µg/ml
IHC-P	5µg/ml
FCM	10µg/ml

Not tested in other applications.

Calculated MW 34 kDa. ( [Note](#) )

## Properties

Form	Liquid
Buffer	TBS, 0.5% BSA
Preservative	0.02% Sodium azide
Storage	Store as concentrated solution. Centrifuge briefly prior to opening vial. For short-term storage (1-2 weeks), store at 4°C. For long-term storage, aliquot and store at -20°C or below. Avoid multiple freeze-thaw cycles.
Concentration	0.50 mg/ml (Please refer to the vial label for the specific concentration.)
Immunogen	Peptide with sequence C-QKTDGTGVSQTYDD, from the C Terminus of the protein sequence according to NP_004855.2.
Purification	Purified by ammonium sulphate precipitation followed by antigen affinity chromatography
Conjugation	Unconjugated

## Note

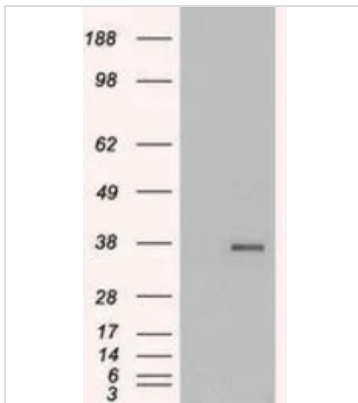
For laboratory research use only. Not for any clinical, therapeutic, or diagnostic use in humans or animals. Not for animal or human consumption.

Purchasers shall not, and agree not to enable third parties to, analyze, copy, reverse engineer or otherwise attempt to determine the structure or sequence of the product.



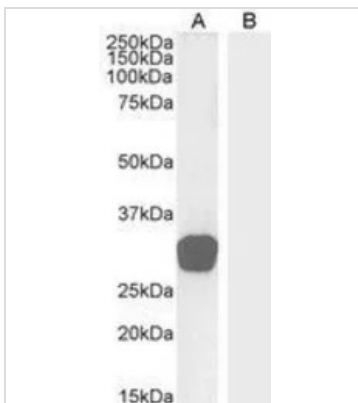
For full product information, images and publications, please visit our [website](#).

## DATA IMAGES



### GTx89503 WB Image

WB analysis of HEK293 overexpressing GDF15 (mock transfection in first lane) using GTx89503 GDF15 antibody, C-term.

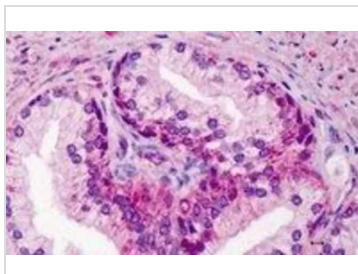


### GTx89503 WB Image

WB analysis of human testes (A) and negative control skin (B) lysate using GTx89503 GDF15 antibody, C-term.

Dilution : 0.3µg/ml

Loading : 35µg protein in RIPA buffer

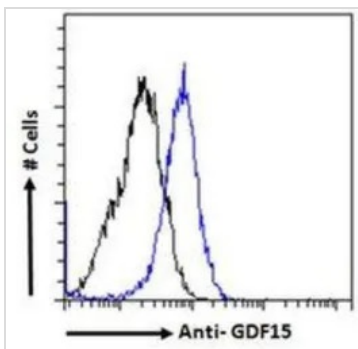


### GTx89503 IHC-P Image

IHC-P analysis of human prostate using GTx89503 GDF15 antibody, C-term.

Antigen retrieval : citrate buffer pH 6

Dilution : 5µg/ml



### GTx89503 FCM Image

FACS analysis of PFA fixed HeLa cells using GTx89503 GDF15 antibody, C-term.

Blue : Primary antibody

Black : Isotype control

Permeabilization : 0.5% Triton

Dilution : 10µg/ml



For full product information, images and publications, please visit our [website](#).