

RAE1 antibody, C-term

Cat. No. GTX89517

| | |
|--------------|------------|
| Host | Goat |
| Clonality | Polyclonal |
| Isotype | IgG |
| Applications | WB, IHC-P |
| Reactivity | Human |

Package
100 µg

Applications

Application Note

*Optimal dilutions/concentrations should be determined by the researcher.

| Suggested dilution | Recommended dilution |
|--------------------|----------------------|
| WB | 0.1-0.3µg/ml |
| IHC-P | 3.75µg/ml |

Note : Human Brain Cortex shows staining of neuronal cell bodies.

Not tested in other applications.

Calculated MW 41 kDa. ([Note](#))

Properties

| | |
|---------------|--|
| Form | Liquid |
| Buffer | TBS, 0.5% BSA |
| Preservative | 0.02% Sodium azide |
| Storage | Store as concentrated solution. Centrifuge briefly prior to opening vial. For short-term storage (1-2 weeks), store at 4°C. For long-term storage, aliquot and store at -20°C or below. Avoid multiple freeze-thaw cycles. |
| Concentration | 0.50 mg/ml (Please refer to the vial label for the specific concentration.) |
| Immunogen | Peptide with sequence C-NAAEELKPRNKK, from the C Terminus of the protein sequence according to NP_003601.1; NP_001015885.1. |
| Purification | Purified by ammonium sulphate precipitation followed by antigen affinity chromatography |
| Conjugation | Unconjugated |

Note

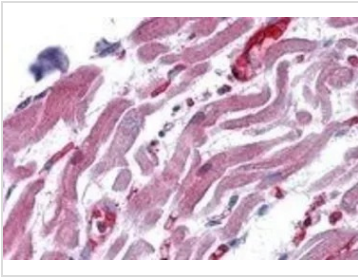
For laboratory research use only. Not for any clinical, therapeutic, or diagnostic use in humans or animals. Not for animal or human consumption.

Purchasers shall not, and agree not to enable third parties to, analyze, copy, reverse engineer or otherwise attempt to determine the structure or sequence of the product.



For full product information, images and publications, please visit our [website](#).

DATA IMAGES

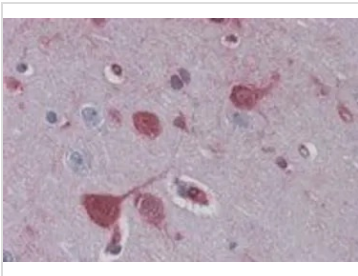


GTx89517 IHC-P Image

IHC-P analysis of human heart using GTx89517 RAE1 antibody, C-term.

Antigen retrieval : citrate buffer pH 6

Dilution : 3.75µg/ml

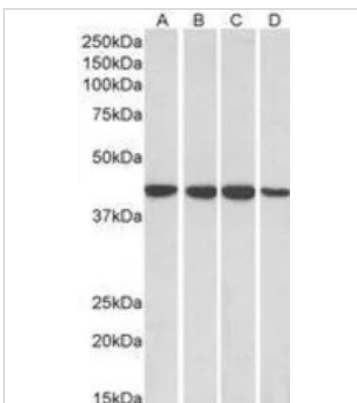


GTx89517 IHC-P Image

IHC-P analysis of human cortex using GTx89517 RAE1 antibody, C-term.

Antigen retrieval : citrate buffer pH 6

Dilution : 3.8µg/ml



GTx89517 WB Image

WB analysis of HepG2 (A), HeLa (B), Jurkat (C) and MCF7 (D) lysates using GTx89517 RAE1 antibody, C-term.

Dilution : 0.1µg/ml

Loading : 35µg protein in RIPA buffer



For full product information, images and publications, please visit our [website](https://www.genetex.com).