

# MIF antibody, C-term

**Cat. No. GTX89535**

<b>Host</b>	Goat
<b>Clonality</b>	Polyclonal
<b>Isotype</b>	IgG
<b>Applications</b>	WB, IHC-P, ELISA, Sandwich ELISA
<b>Reactivity</b>	Human

**Package**  
100 µg

## Applications

### Application Note

\*Optimal dilutions/concentrations should be determined by the researcher.

Suggested dilution	Recommended dilution
WB	0.01-0.03µg/ml
IHC-P	5µg/ml
ELISA	Assay dependent
Sandwich ELISA	Assay dependent

Not tested in other applications.

**Calculated MW** 12 kDa. ( [Note](#) )

## Properties

<b>Form</b>	Liquid
<b>Buffer</b>	TBS, 0.5% BSA
<b>Preservative</b>	0.02% Sodium azide
<b>Storage</b>	Store as concentrated solution. Centrifuge briefly prior to opening vial. For short-term storage (1-2 weeks), store at 4°C. For long-term storage, aliquot and store at -20°C or below. Avoid multiple freeze-thaw cycles.
<b>Concentration</b>	0.50 mg/ml (Please refer to the vial label for the specific concentration.)
<b>Immunogen</b>	Peptide with sequence C-NAANVGWNNSTFA, from the C Terminus of the protein sequence according to NP_002406.1.
<b>Purification</b>	Purified by ammonium sulphate precipitation followed by antigen affinity chromatography
<b>Conjugation</b>	Unconjugated

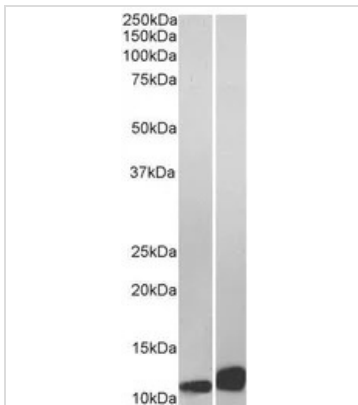
### Note

For laboratory research use only. Not for any clinical, therapeutic, or diagnostic use in humans or animals. Not for animal or human consumption.

Purchasers shall not, and agree not to enable third parties to, analyze, copy, reverse engineer or otherwise attempt to determine the structure or sequence of the product.



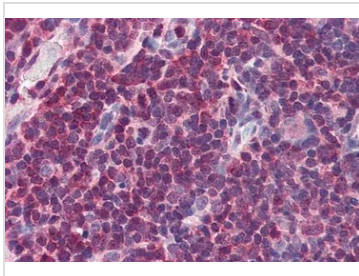
For full product information, images and publications, please visit our [website](#).

**DATA IMAGES**

**GTX89535 WB Image**

WB analysis of Daudi (A) and Jurkat (B) lysate using GTX89535 MIF antibody, C-term.

Dilution : 0.01µg/ml

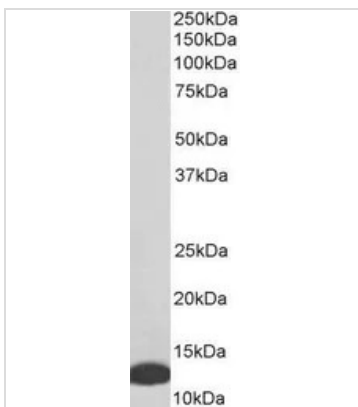
Loading : 35µg protein in RIPA buffer


**GTX89535 IHC-P Image**

IHC-P analysis of human thymus using GTX89535 MIF antibody, C-term.

Antigen retrieval : citrate buffer pH 6

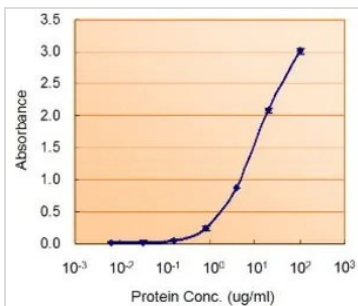
Dilution : 5µg/ml


**GTX89535 WB Image**

WB analysis of human thymus lysate using GTX89535 MIF antibody, C-term.

Dilution : 0.01µg/ml

Loading : 35µg protein in RIPA buffer


**GTX89535 ELISA Image**

ELISA analysis of MIF protein using GTX89535 MIF antibody, C-term.

**Capture** : GTX101162 (5µg/ml)

**Detection** : GTX89535 (1.5µg/ml)



For full product information, images and publications, please visit our [website](http://www.genetex.com).