

# Pancreatic Polypeptide antibody, Internal

**Cat. No. GTX89539**

<b>Host</b>	Goat
<b>Clonality</b>	Polyclonal
<b>Isotype</b>	IgG
<b>Application</b>	WB, ICC/IF, IHC-P
<b>Reactivity</b>	Human, Rat

**Package**  
100 µg

## APPLICATION

### Application Note

\*Optimal dilutions/concentrations should be determined by the researcher.

Suggested dilution	Recommended dilution
WB	Assay dependent
ICC/IF	Assay dependent
IHC-P	5µg/ml

**Note : Human Pancreas shows strong cytoplasmic staining of rare cells located at the periphery of islets of Langerhans.**

Not tested in other applications.

**Calculated MW** 10 kDa. ( [Note](#) )

## PROPERTIES

<b>Form</b>	Liquid
<b>Buffer</b>	TBS, 0.5% BSA
<b>Preservative</b>	0.02% Sodium azide
<b>Storage</b>	Store as concentrated solution. Centrifuge briefly prior to opening vial. For short-term storage (1-2 weeks), store at 4°C. For long-term storage, aliquot and store at -20°C or below. Avoid multiple freeze-thaw cycles.
<b>Concentration</b>	0.50 mg/ml (Please refer to the vial label for the specific concentration.)
<b>Immunogen</b>	Peptide with sequence C-TRPRYGKRHKEDT, from the internal region of the protein sequence according to NP_002713.1.
<b>Purification</b>	Purified by ammonium sulphate precipitation followed by antigen affinity chromatography
<b>Conjugation</b>	Unconjugated

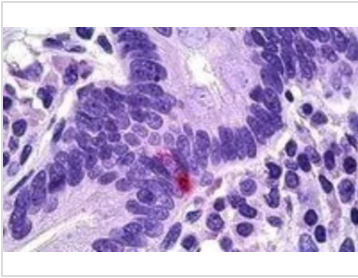
### Note

For laboratory research use only. Not for any clinical, therapeutic, or diagnostic use in humans or animals. Not for animal or human consumption.

Purchasers shall not, and agree not to enable third parties to, analyze, copy, reverse engineer or otherwise attempt to determine the structure or sequence of the product.



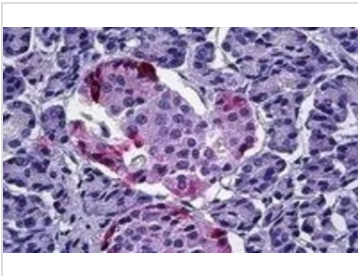
For full product information, images and publications, please visit our [website](#).

**DATA IMAGES**

**GTx89539 IHC-P Image**

IHC-P analysis of human Intestine using GTx89539 Pancreatic Polypeptide antibody, Internal.

Antigen retrieval : citrate buffer pH 6

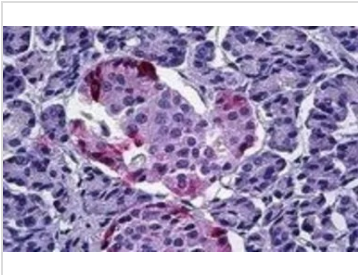
Dilution : 5µg/ml


**GTx89539 IHC-P Image**

IHC-P analysis of human pancreas using GTx89539 Pancreatic Polypeptide antibody, Internal.

Antigen retrieval : citrate buffer pH 6

Dilution : 5µg/ml


**GTx89539 IHC-P Image**

IHC-P analysis of human pancreas using GTx89539 Pancreatic Polypeptide antibody, Internal.

Antigen retrieval : Tris/EDTA buffer pH 9

Dilution : 3µg/ml



For full product information, images and publications, please visit our [website](#).