

# CD32B antibody, C-term

**Cat. No. GTX89542**

<b>Host</b>	Goat
<b>Clonality</b>	Polyclonal
<b>Isotype</b>	IgG
<b>Applications</b>	WB, IHC-P
<b>Reactivity</b>	Human

**Package**  
100 µg

## Applications

### Application Note

\*Optimal dilutions/concentrations should be determined by the researcher.

Suggested dilution	Recommended dilution
WB	0.3-1µg/ml
IHC-P	Assay dependent

Not tested in other applications.

**Calculated MW** 34 kDa. ( [Note](#) )

**Product Note** This antibody is expected to recognise all reported isoforms (NP\_001002273.1; NP\_001002274.1; NP\_001002275.1; NP\_003992.3; NP\_001177757.1).

## Properties

<b>Form</b>	Liquid
<b>Buffer</b>	TBS, 0.5% BSA
<b>Preservative</b>	0.02% Sodium azide
<b>Storage</b>	Store as concentrated solution. Centrifuge briefly prior to opening vial. For short-term storage (1-2 weeks), store at 4°C. For long-term storage, aliquot and store at -20°C or below. Avoid multiple freeze-thaw cycles.
<b>Concentration</b>	0.50 mg/ml (Please refer to the vial label for the specific concentration.)
<b>Immunogen</b>	Peptide with sequence C-PDALEEPDDQNRI, from the C Terminus of the protein sequence according to NP_003992.3; NP_001002273.1; NP_001002274.1; NP_001002275.1; NP_001177757.1.
<b>Purification</b>	Purified by ammonium sulphate precipitation followed by antigen affinity chromatography
<b>Conjugation</b>	Unconjugated



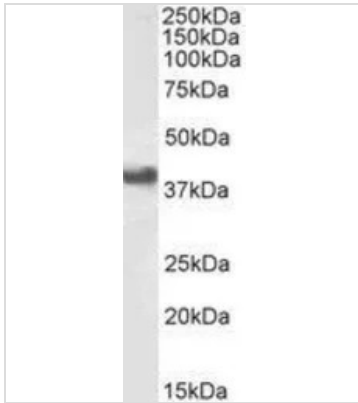
For full product information, images and publications, please visit our [website](#).

For laboratory research use only. Not for any clinical, therapeutic, or diagnostic use in humans or animals. Not for animal or human consumption.

## Note

Purchasers shall not, and agree not to enable third parties to, analyze, copy, reverse engineer or otherwise attempt to determine the structure or sequence of the product.

## DATA IMAGES

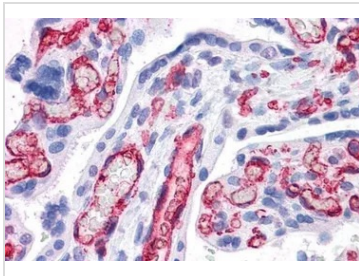


### GTx89542 WB Image

WB analysis of Daudi cell lysate using GTx89542 CD32B antibody, C-term.

Dilution : 1µg/ml

Loading : 35µg protein in RIPA buffer

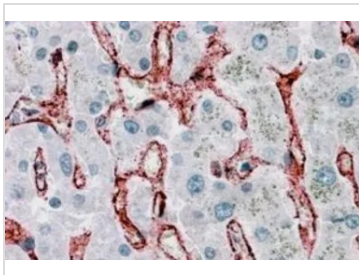


### GTx89542 IHC-P Image

IHC-P analysis of human placenta using GTx89542 CD32B antibody, C-term.

Antigen retrieval : citrate buffer pH 6

Dilution : 3.75µg/ml



### GTx89542 IHC-P Image

IHC-P analysis of human liver using GTx89542 CD32B antibody, C-term.

Antigen retrieval : citrate buffer pH 6

Dilution : 3.75µg/ml



For full product information, images and publications, please visit our [website](https://www.genetex.com).