

## Parvalbumin antibody, C-term

Cat. No. GTX89558

Host	Goat
Clonality	Polyclonal
Isotype	IgG
Applications	WB, IHC-P, FCM
Reactivity	Human, Rat

References ( 1 )

Package

100 µg

## Applications

## Application Note

\*Optimal dilutions/concentrations should be determined by the researcher.

Suggested dilution	Recommended dilution
WB	0.1-0.3µg/ml
IHC-P	2.5µg/ml
FCM	10µg/ml

Not tested in other applications.

Calculated MW 12 kDa. ( [Note](#) )

## Properties

Form	Liquid
Buffer	TBS, 0.5% BSA
Preservative	0.02% Sodium azide
Storage	Store as concentrated solution. Centrifuge briefly prior to opening vial. For short-term storage (1-2 weeks), store at 4°C. For long-term storage, aliquot and store at -20°C or below. Avoid multiple freeze-thaw cycles.
Concentration	0.50 mg/ml (Please refer to the vial label for the specific concentration.)
Immunogen	Peptide with sequence C-GVDEFSTLVAES, from the C Terminus of the protein sequence according to NP_002845.1.
Purification	Purified by ammonium sulphate precipitation followed by antigen affinity chromatography
Conjugation	Unconjugated

## Note

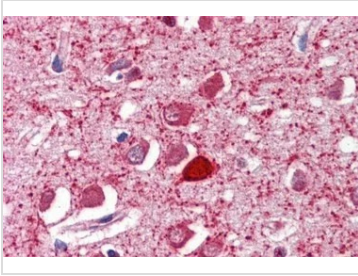
For laboratory research use only. Not for any clinical, therapeutic, or diagnostic use in humans or animals. Not for animal or human consumption.

Purchasers shall not, and agree not to enable third parties to, analyze, copy, reverse engineer or otherwise attempt to determine the structure or sequence of the product.



For full product information, images and publications, please visit our [website](#).

## DATA IMAGES

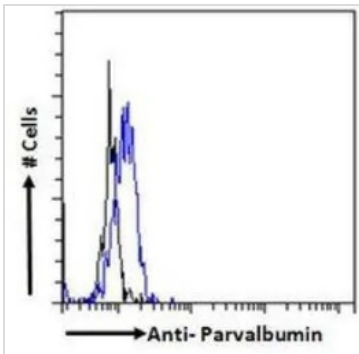


### GTX89558 IHC-P Image

IHC-P analysis of human cortex using GTX89558 Parvalbumin antibody, C-term.

Antigen retrieval : citrate buffer pH 6

Dilution : 2.5µg/ml



### GTX89558 FCM Image

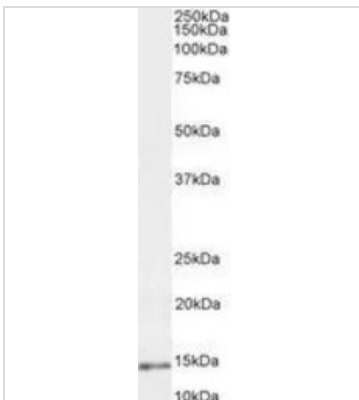
FACS analysis of PFA fixed Kelly cells using GTX89558 Parvalbumin antibody, C-term.

Blue : Primary antibody

Black : Isotype control

Permeabilization : 0.5% Triton

Dilution : 10µg/ml

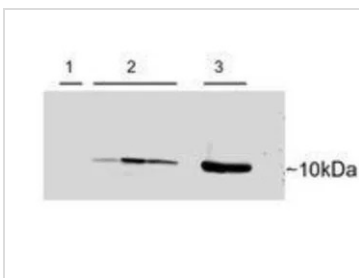


### GTX89558 WB Image

WB analysis of human cerebellum lysate using GTX89558 Parvalbumin antibody, C-term.

Dilution : 0.3µg/ml

Loading : 35µg protein in RIPA buffer



### GTX89558 WB Image

WB analysis of adenovirus-mediated gene transfer in rat heart cells 1) untransfected, 2) transient transfection with human PVALB 3) untransfected rat skeletal muscle using GTX89558 Parvalbumin antibody, C-term.

Dilution : 0.15µg/ml



For full product information, images and publications, please visit our [website](https://www.genetex.com).