

PAI-1 antibody, Internal

Cat. No. GTX89568

Host	Goat
Clonality	Polyclonal
Isotype	IgG
Applications	WB, IHC-P, ELISA, Sandwich ELISA
Reactivity	Human

[References \(1 \)](#)
Package

100 µg

Applications

Application Note

*Optimal dilutions/concentrations should be determined by the researcher.

Suggested dilution	Recommended dilution
WB	0.1-0.3µg/ml
IHC-P	4-6µg/ml
ELISA	Assay dependent
Sandwich ELISA	Assay dependent

Note : Human Placenta shows strong staining of cytotrophoblasts.

Not tested in other applications.

Calculated MW 45 kDa. ([Note](#))

Properties

Form	Liquid
Buffer	TBS, 0.5% BSA
Preservative	0.02% Sodium azide
Storage	Store as concentrated solution. Centrifuge briefly prior to opening vial. For short-term storage (1-2 weeks), store at 4°C. For long-term storage, aliquot and store at -20°C or below. Avoid multiple freeze-thaw cycles.
Concentration	0.50 mg/ml (Please refer to the vial label for the specific concentration.)
Immunogen	Peptide with sequence C-GFKIDDKGMAPALRH, from the internal region of the protein sequence according to NP_000593.1.
Purification	Purified by ammonium sulphate precipitation followed by antigen affinity chromatography
Conjugation	Unconjugated



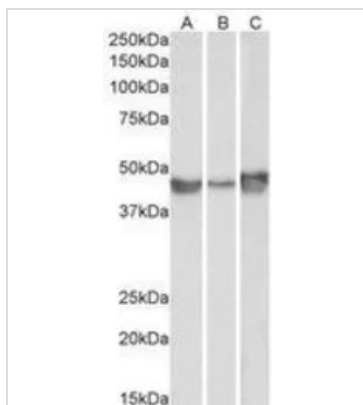
For full product information, images and publications, please visit our [website](#).

For laboratory research use only. Not for any clinical, therapeutic, or diagnostic use in humans or animals. Not for animal or human consumption.

Note

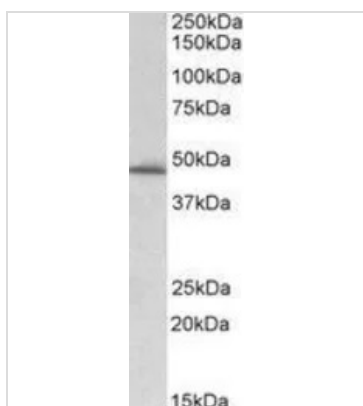
Purchasers shall not, and agree not to enable third parties to, analyze, copy, reverse engineer or otherwise attempt to determine the structure or sequence of the product.

DATA IMAGES



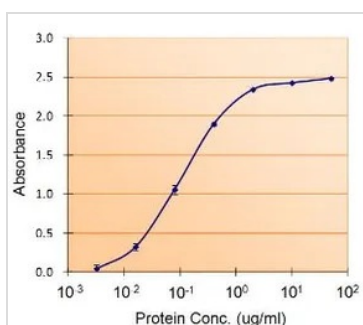
GTX89568 WB Image

WB analysis of A549 (A), HepG2 (B) and HeLa (C) lysates using GTX89568 PAI-1 antibody, Internal.
 Dilution : 0.1µg/ml
 Loading : 35µg protein in RIPA buffer



GTX89568 WB Image

WB analysis of human liver lysate using GTX89568 PAI-1 antibody, Internal.
 Dilution : 0.3µg/ml
 Loading : 35µg protein in RIPA buffer



GTX89568 ELISA Image

ELISA analysis of PAI-1 protein using GTX89568 PAI-1 antibody, Internal.
Capture : GTX100550 (2.5µg/ml)
Detection : GTX89568 (1.5µg/ml)



For full product information, images and publications, please visit our [website](#).