

Renalase (aa 224 to 233) antibody, Internal

Cat. No. GTX89570

| | |
|---------------------|-------------------|
| Host | Goat |
| Clonality | Polyclonal |
| Isotype | IgG |
| Applications | WB, IHC-P, IHC-Fr |
| Reactivity | Human, Mouse, Rat |

References (5)

Package

100 µg

Applications

Application Note

*Optimal dilutions/concentrations should be determined by the researcher.

| Suggested dilution | Recommended dilution |
|--------------------|----------------------|
| WB | 1-3µg/ml |
| IHC-P | Assay dependent |
| IHC-Fr | Assay dependent |

Not tested in other applications.

Calculated MW 38 kDa. ([Note](#))**Product Note**

This antibody is expected to recognise both reported isoforms (NP_001026879.2 and NP_060833.1). KO/KD validation is based on published data (PMID: 27868059).

Properties

| | |
|----------------------|--|
| Form | Liquid |
| Buffer | TBS, 0.5% BSA |
| Preservative | 0.02% Sodium azide |
| Storage | Store as concentrated solution. Centrifuge briefly prior to opening vial. For short-term storage (1-2 weeks), store at 4°C. For long-term storage, aliquot and store at -20°C or below. Avoid multiple freeze-thaw cycles. |
| Concentration | 0.50 mg/ml (Please refer to the vial label for the specific concentration.) |
| Immunogen | Peptide with sequence C-VSIDNKKRNI, from the internal region of the protein sequence according to NP_001026879.2; NP_060833.1. |
| Purification | Purified by ammonium sulphate precipitation followed by antigen affinity chromatography |
| Conjugation | Unconjugated |

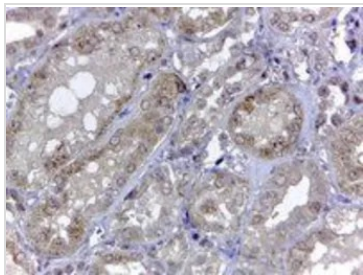
For full product information, images and publications, please visit our [website](#).

For laboratory research use only. Not for any clinical, therapeutic, or diagnostic use in humans or animals. Not for animal or human consumption.

Note

Purchasers shall not, and agree not to enable third parties to, analyze, copy, reverse engineer or otherwise attempt to determine the structure or sequence of the product.

DATA IMAGES

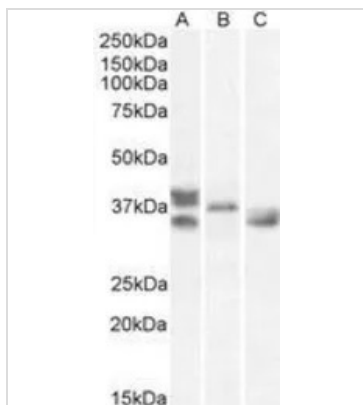


GTx89570 IHC-P Image

IHC-P analysis of human kidney using GTx89570 Renalase (aa 224 to 233) antibody, Internal.

Antigen retrieval : citrate buffer pH 6

Dilution : 2µg/ml

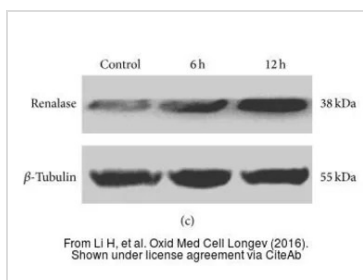


GTx89570 WB Image

WB analysis of human heart (A), mouse heart (B), rat heart (C) lysates using GTx89570 Renalase (aa 224 to 233) antibody, Internal.

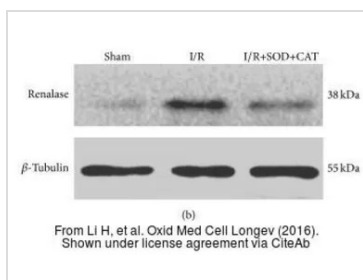
Dilution : 1µg/ml

Loading : 35µg protein in RIPA buffer



GTx89570 WB Image

The data was published in the journal Oxid Med Cell Longev in 2016. [PMID: 27867452](https://pubmed.ncbi.nlm.nih.gov/27867452/)



GTx89570 WB Image

The data was published in the journal Oxid Med Cell Longev in 2016. [PMID: 27867452](https://pubmed.ncbi.nlm.nih.gov/27867452/)



For full product information, images and publications, please visit our [website](https://www.genetex.com).