

## GAD65 antibody, Internal

Cat. No. GTX89575

|              |            |
|--------------|------------|
| Host         | Goat       |
| Clonality    | Polyclonal |
| Isotype      | IgG        |
| Applications | WB, IHC-P  |
| Reactivity   | Human      |

**Package**  
100 µg

## Applications

## Application Note

\*Optimal dilutions/concentrations should be determined by the researcher.

| Suggested dilution | Recommended dilution |
|--------------------|----------------------|
| WB                 | 0.3-1µg/ml           |
| IHC-P              | Assay dependent      |

Not tested in other applications.

**Calculated MW** 65 kDa. ( [Note](#) )**Product Note** This antibody is expected to recognise both reported variants.

## Properties

|               |  |
|---------------|--|
| Form          | Liquid   |
| Buffer        | TBS, 0.5% BSA  |
| Preservative  | 0.02% Sodium azide   |
| Storage       | Store as concentrated solution. Centrifuge briefly prior to opening vial. For short-term storage (1-2 weeks), store at 4°C. For long-term storage, aliquot and store at -20°C or below. Avoid multiple freeze-thaw cycles. |
| Concentration | 0.50 mg/ml (Please refer to the vial label for the specific concentration.)  |
| Immunogen     | Peptide with sequence C-TLEDNEERMSRLSK, from the internal region of the protein sequence according to NP_000809.1; NP_001127838.1.   |
| Purification  | Purified by ammonium sulphate precipitation followed by antigen affinity chromatography  |
| Conjugation   | Unconjugated   |

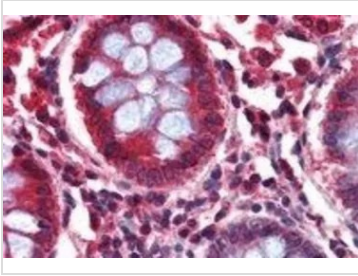
## Note

For laboratory research use only. Not for any clinical, therapeutic, or diagnostic use in humans or animals. Not for animal or human consumption.

Purchasers shall not, and agree not to enable third parties to, analyze, copy, reverse engineer or otherwise attempt to determine the structure or sequence of the product.



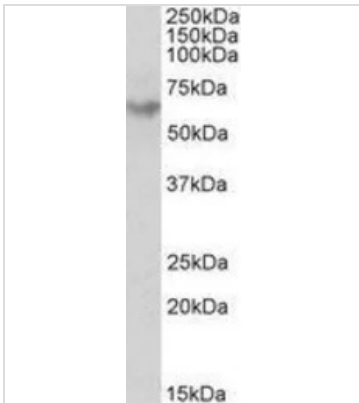
For full product information, images and publications, please visit our [website](#).

**DATA IMAGES**

**GTX89575 IHC-P Image**

IHC-P analysis of human colon using GTX89575 GAD65 antibody, Internal.

Antigen retrieval : citrate buffer pH 6

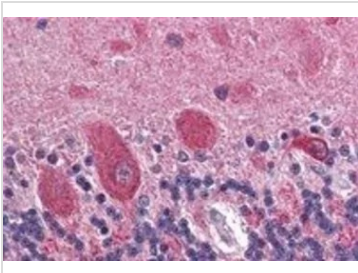
Dilution : 2.5µg/ml


**GTX89575 WB Image**

WB analysis of human hippocampus lysate using GTX89575 GAD65 antibody, Internal.

Dilution : 0.3µg/ml

Loading : 35µg protein in RIPA buffer


**GTX89575 IHC-P Image**

IHC-P analysis of human cerebellum using GTX89575 GAD65 antibody, Internal.

Antigen retrieval : citrate buffer pH 6

Dilution : 2.5µg/ml



For full product information, images and publications, please visit our [website](https://www.genetex.com).