

Asporin antibody, Internal

Cat. No. GTX89589

Host	Goat
Clonality	Polyclonal
Isotype	IgG
Applications	WB, ICC/IF
Reactivity	Human, Mouse, Rat

Package
100 µg

Applications

Application Note

*Optimal dilutions/concentrations should be determined by the researcher.

Suggested dilution	Recommended dilution
WB	0.1-1µg/ml
ICC/IF	10µg/ml

Note : Strong expression of the protein seen in the cytoplasm of HeLa cells.

Not tested in other applications.

Calculated MW 43 kDa. ([Note](#))

Properties

Form	Liquid
Buffer	TBS, 0.5% BSA
Preservative	0.02% Sodium azide
Storage	Store as concentrated solution. Centrifuge briefly prior to opening vial. For short-term storage (1-2 weeks), store at 4°C. For long-term storage, aliquot and store at -20°C or below. Avoid multiple freeze-thaw cycles.
Concentration	0.50 mg/ml (Please refer to the vial label for the specific concentration.)
Immunogen	Peptide with sequence C-IHENKVKIKQKDT, from the internal region of the protein sequence according to NP_060150.4.
Purification	Purified by ammonium sulphate precipitation followed by antigen affinity chromatography
Conjugation	Unconjugated

Note

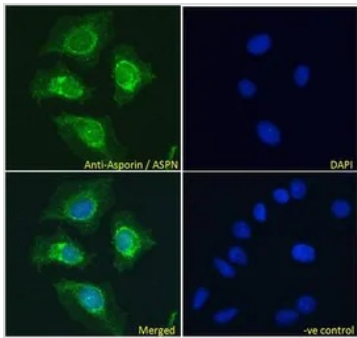
For laboratory research use only. Not for any clinical, therapeutic, or diagnostic use in humans or animals. Not for animal or human consumption.

Purchasers shall not, and agree not to enable third parties to, analyze, copy, reverse engineer or otherwise attempt to determine the structure or sequence of the product.



For full product information, images and publications, please visit our [website](#).

DATA IMAGES



GTx89589 ICC/IF Image

ICC/IF analysis of PFA fixed HeLa cells using GTx89589 Asporin antibody, Internal.

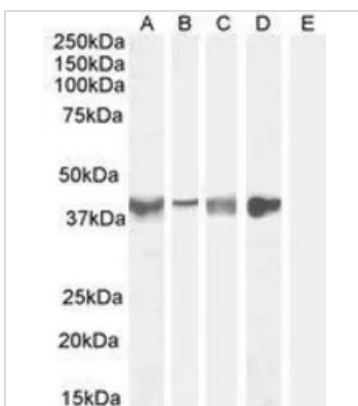
Green : Primary antibody

Blue : DAPI

Negative control : Unimmunized goat IgG

Permeabilization : 0.15% Triton

Dilution : 10µg/ml



GTx89589 WB Image

WB analysis of human tonsil (A), human uterus (B), mouse skeletal muscle (C) rat skeletal muscle (D) and negative control human cerebellum (E) lysate using GTx89589 Asporin antibody, Internal.

Dilution : 0.1-1µg/ml

Loading : 35µg protein in RIPA buffer



For full product information, images and publications, please visit our [website](https://www.genetex.com).