

ADAM12 antibody, N-term

Cat. No. GTX89596

Host	Goat
Clonality	Polyclonal
Isotype	IgG
Applications	ICC/IF, IHC-P, FCM
Reactivity	Human

Package
100 µg

Applications

Application Note

*Optimal dilutions/concentrations should be determined by the researcher.

Suggested dilution	Recommended dilution
ICC/IF	10µg/ml
IHC-P	3.75µg/ml
FCM	Assay dependent

**Note : Strong expression of the protein seen in the cytoplasm and plasma membrane of A431 cells.
Human Prostate shows strong cytoplasm staining of a group of secretory epithelial cells.**

Not tested in other applications.

Product Note

This antibody is expected to recognise both the longer membrane-bound form of human ADAM12 (NP_003465.3) and the shorter soluble ADAM12 splice isoform (NP_067673.2). This antibody does not cross-react with other ADAMS.

Properties

Form	Liquid
Buffer	TBS, 0.5% BSA
Preservative	0.02% Sodium azide
Storage	Store as concentrated solution. Centrifuge briefly prior to opening vial. For short-term storage (1-2 weeks), store at 4°C. For long-term storage, aliquot and store at -20°C or below. Avoid multiple freeze-thaw cycles.
Concentration	0.50 mg/ml (Please refer to the vial label for the specific concentration.)
Immunogen	Peptide with sequence AARPLVSPARALC, from the N Terminus of the protein sequence according to NP_003465.3; NP_067673.2.
Purification	Purified by ammonium sulphate precipitation followed by antigen affinity chromatography
Conjugation	Unconjugated



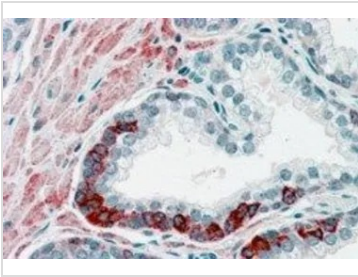
For full product information, images and publications, please visit our [website](#).

For laboratory research use only. Not for any clinical, therapeutic, or diagnostic use in humans or animals. Not for animal or human consumption.

Note

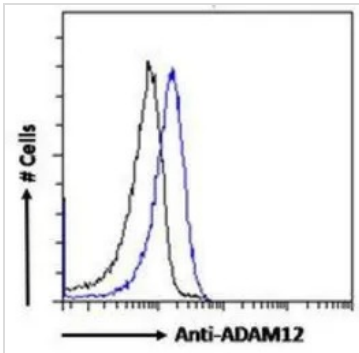
Purchasers shall not, and agree not to enable third parties to, analyze, copy, reverse engineer or otherwise attempt to determine the structure or sequence of the product.

DATA IMAGES



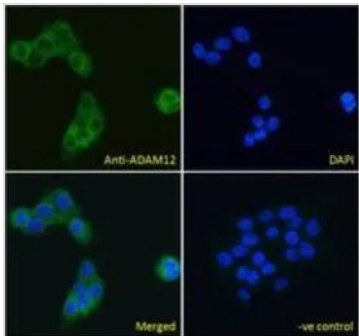
GTx89596 IHC-P Image

IHC-P analysis of human prostate using GTX89596 ADAM12 antibody, N-term.
Antigen retrieval : citrate buffer pH 6
Dilution : 3.8µg/ml



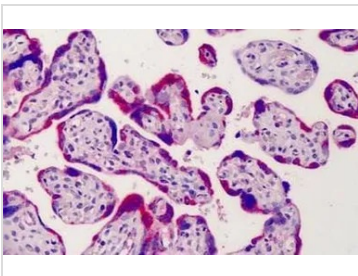
GTx89596 FCM Image

FACS analysis of PFA fixed HeLa cells using GTX89596 ADAM12 antibody, N-term.
Blue : Primary antibody
Black : Isotype control
Permeabilization : 0.5% Triton
Dilution : 10µg/ml



GTx89596 ICC/IF Image

ICC/IF analysis of PFA fixed A431 cells using GTX89596 ADAM12 antibody, N-term.
Green : Primary antibody
Blue : DAPI
Negative control : Unimmunized goat IgG
Permeabilization : 0.15% Triton
Dilution : 10µg/ml



GTx89596 IHC-P Image

IHC-P analysis of human placenta using GTX89596 ADAM12 antibody, N-term.
Antigen retrieval : citrate buffer pH 6
Dilution : 3.75µg/ml



For full product information, images and publications, please visit our [website](#).