

MyD88 antibody, Internal

Cat. No. GTX89605

Host	Goat
Clonality	Polyclonal
Isotype	IgG
Applications	WB, IHC-P, ELISA, Sandwich ELISA
Reactivity	Human

Package
100 µg

Applications

Application Note

*Optimal dilutions/concentrations should be determined by the researcher.

Suggested dilution	Recommended dilution
WB	0.1-0.3µg/ml
IHC-P	4-6µg/ml
ELISA	Assay dependent
Sandwich ELISA	Assay dependent

Note : Human Tonsil shows staining of clusters of cells some of which are likely plasma cells.

Not tested in other applications.

Calculated MW 33 kDa. ([Note](#))

Product Note This antibody is expected to recognize reported isoforms 1, 2 and 3 (NP_001166038.1; NP_002459.2; NP_001166039.1).

Properties

Form	Liquid
Buffer	TBS, 0.5% BSA
Preservative	0.02% Sodium azide
Storage	Store as concentrated solution. Centrifuge briefly prior to opening vial. For short-term storage (1-2 weeks), store at 4°C. For long-term storage, aliquot and store at -20°C or below. Avoid multiple freeze-thaw cycles.
Concentration	0.50 mg/ml (Please refer to the vial label for the specific concentration.)
Immunogen	Peptide with sequence C-IKYKAMKKEFP, from the internal region of the protein sequence according to NP_001166038.1; NP_002459.2; NP_001166039.1.
Purification	Purified by ammonium sulphate precipitation followed by antigen affinity chromatography
Conjugation	Unconjugated

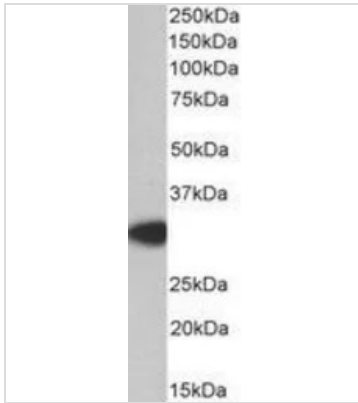


For full product information, images and publications, please visit our [website](#).

For laboratory research use only. Not for any clinical, therapeutic, or diagnostic use in humans or animals. Not for animal or human consumption.

Note

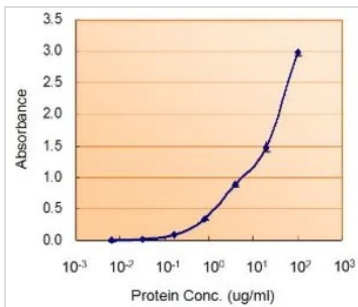
Purchasers shall not, and agree not to enable third parties to, analyze, copy, reverse engineer or otherwise attempt to determine the structure or sequence of the product.

DATA IMAGES

GTX89605 WB Image

WB analysis of human thymus lysate using GTX89605 MyD88 antibody, Internal.

Dilution : 0.2µg/ml

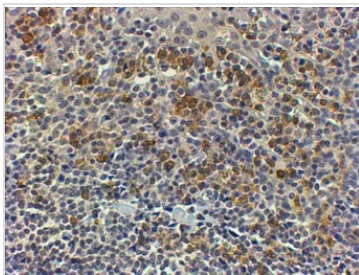
Loading : 35µg protein in RIPA buffer


GTX89605 ELISA Image

ELISA analysis of MyD88 protein using GTX89605 MyD88 antibody, Internal.

Capture : GTX112986 (5µg/ml)

Detection : GTX89605 (5µg/ml)


GTX89605 IHC-P Image

IHC-P analysis of human tonsil using GTX89605 MyD88 antibody, Internal.

Antigen retrieval : Tris/EDTA buffer pH 9

Dilution : 4µg/ml



For full product information, images and publications, please visit our [website](https://www.genetex.com).