

## MyD88 antibody, Internal

Cat. No. GTX89605

Host	Goat
Clonality	Polyclonal
Isotype	IgG
Applications	WB, IHC-P, ELISA, Sandwich ELISA
Reactivity	Human

Package  
100 µg

## Applications

## Application Note

\*Optimal dilutions/concentrations should be determined by the researcher.

Suggested dilution	Recommended dilution
WB	0.1-0.3µg/ml
IHC-P	4-6µg/ml
ELISA	Assay dependent
Sandwich ELISA	Assay dependent

**Note : Human Tonsil shows staining of clusters of cells some of which are likely plasma cells.**

Not tested in other applications.

Calculated MW	33 kDa. ( <a href="#">Note</a> )
Product Note	This antibody is expected to recognize reported isoforms 1, 2 and 3 (NP_001166038.1; NP_002459.2; NP_001166039.1).

## Properties

Form	Liquid
Buffer	TBS, 0.5% BSA
Preservative	0.02% Sodium azide
Storage	Store as concentrated solution. Centrifuge briefly prior to opening vial. For short-term storage (1-2 weeks), store at 4°C. For long-term storage, aliquot and store at -20°C or below. Avoid multiple freeze-thaw cycles.
Concentration	0.50 mg/ml (Please refer to the vial label for the specific concentration.)
Immunogen	Peptide with sequence C-IKYKAMKKEFP, from the internal region of the protein sequence according to NP_001166038.1; NP_002459.2; NP_001166039.1.
Purification	Purified by ammonium sulphate precipitation followed by antigen affinity chromatography
Conjugation	Unconjugated



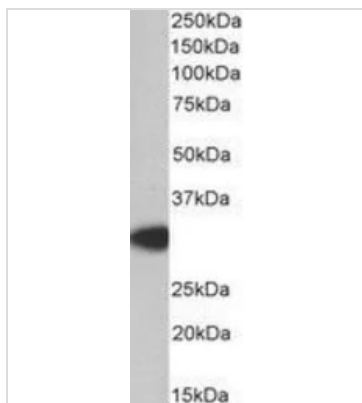
For full product information, images and publications, please visit our [website](#).

For laboratory research use only. Not for any clinical, therapeutic, or diagnostic use in humans or animals. Not for animal or human consumption.

## Note

Purchasers shall not, and agree not to enable third parties to, analyze, copy, reverse engineer or otherwise attempt to determine the structure or sequence of the product.

## DATA IMAGES

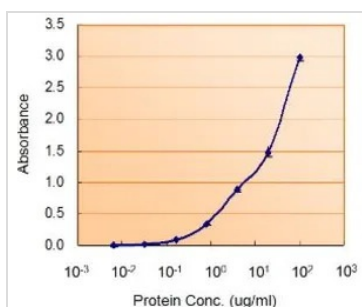


### GTx89605 WB Image

WB analysis of human thymus lysate using GTx89605 MyD88 antibody, Internal.

Dilution : 0.2µg/ml

Loading : 35µg protein in RIPA buffer

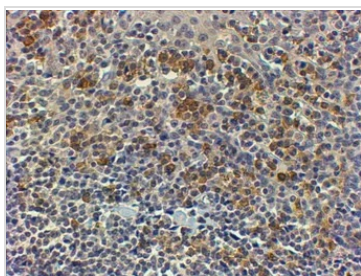


### GTx89605 ELISA Image

ELISA analysis of MyD88 protein using GTx89605 MyD88 antibody, Internal.

Capture : GTx112986 (5µg/ml)

Detection : GTx89605 (5µg/ml)



### GTx89605 IHC-P Image

IHC-P analysis of human tonsil using GTx89605 MyD88 antibody, Internal.

Antigen retrieval : Tris/EDTA buffer pH 9

Dilution : 4µg/ml



For full product information, images and publications, please visit our [website](https://www.genetex.com).