

Alcohol Dehydrogenase antibody, N-term

Cat. No. GTX89624

Host	Goat
Clonality	Polyclonal
Isotype	IgG
Applications	WB, IHC
Reactivity	Human

Package
100 µg

Applications

Application Note

*Optimal dilutions/concentrations should be determined by the researcher.

Suggested dilution	Recommended dilution
WB	1-3µg/ml
IHC	Assay dependent

Not tested in other applications.

Product Note

This antibody is expected to recognise the alpha (ADH1A, NP_000658.1), the beta (ADH1B, NP_000659.2) and gamma (ADH1C, NP_000660.1) polypeptide variants of human alcohol dehydrogenase.

Properties

Form	Liquid
Buffer	TBS, 0.5% BSA
Preservative	0.02% Sodium azide
Storage	Store as concentrated solution. Centrifuge briefly prior to opening vial. For short-term storage (1-2 weeks), store at 4°C. For long-term storage, aliquot and store at -20°C or below. Avoid multiple freeze-thaw cycles.
Concentration	0.50 mg/ml (Please refer to the vial label for the specific concentration.)
Immunogen	Peptide with sequence STAGKVMKCKA, from the N Terminus of the protein sequence according to NP_000658.1; NP_000659.2; NP_000660.1.
Purification	Purified by ammonium sulphate precipitation followed by antigen affinity chromatography
Conjugation	Unconjugated

Note

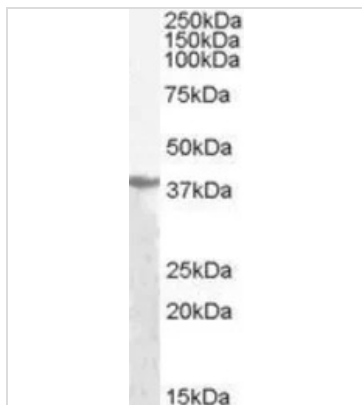
For laboratory research use only. Not for any clinical, therapeutic, or diagnostic use in humans or animals. Not for animal or human consumption.

Purchasers shall not, and agree not to enable third parties to, analyze, copy, reverse engineer or otherwise attempt to determine the structure or sequence of the product.



For full product information, images and publications, please visit our [website](#).

DATA IMAGES



GTx89624 WB Image

WB analysis of human liver lysate using GTx89624 Alcohol Dehydrogenase antibody, N-term.

Dilution : 1µg/ml

Loading : 35µg protein in RIPA buffer



For full product information, images and publications, please visit our [website](#).