

15-PGDH antibody, C-term

Cat. No. GTX89634

Host	Goat
Clonality	Polyclonal
Isotype	IgG
Application	WB, IHC-P
Reactivity	Human

Package

100 µg

APPLICATION

Application Note

*Optimal dilutions/concentrations should be determined by the researcher.

Suggested dilution	Recommended dilution
WB	0.1-1µg/ml
IHC-P	2-4µg/ml

Note : Human Colon shows strong cytoplasm staining of enterocytes.

Not tested in other applications.

Calculated MW 29 kDa. ([Note](#))

PROPERTIES

Form	Liquid
Buffer	TBS, 0.5% BSA
Preservative	0.02% Sodium azide
Storage	Store as concentrated solution. Centrifuge briefly prior to opening vial. For short-term storage (1-2 weeks), store at 4°C. For long-term storage, aliquot and store at -20°C or below. Avoid multiple freeze-thaw cycles.
Concentration	0.50 mg/ml (Please refer to the vial label for the specific concentration.)
Immunogen	Peptide with sequence C-DYDTTPFQAKTQ, from the C Terminus of the protein sequence according to NP_000851.2.
Purification	Purified by ammonium sulphate precipitation followed by antigen affinity chromatography
Conjugation	Unconjugated

Note

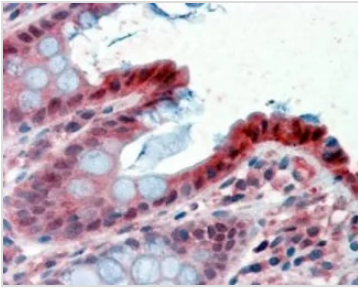
For laboratory research use only. Not for any clinical, therapeutic, or diagnostic use in humans or animals. Not for animal or human consumption.

Purchasers shall not, and agree not to enable third parties to, analyze, copy, reverse engineer or otherwise attempt to determine the structure or sequence of the product.



For full product information, images and publications, please visit our [website](#).

DATA IMAGES

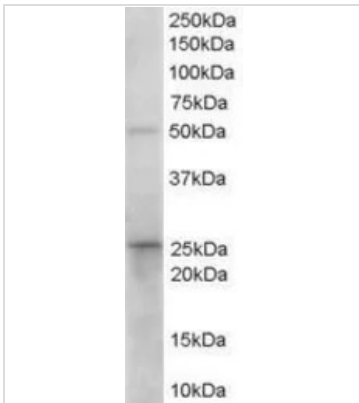


GTx89634 IHC-P Image

IHC-P analysis of human colon using GTx89634 15-PGDH antibody, C-term.

Antigen retrieval : citrate buffer pH 6

Dilution : 2.5µg/ml

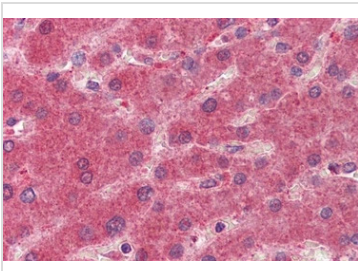


GTx89634 WB Image

WB analysis of human duodenum lysate using GTx89634 15-PGDH antibody, C-term.

Dilution : 0.1µg/ml

Loading : 35µg protein in RIPA buffer



GTx89634 IHC-P Image

IHC-P analysis of paraffin embedded human liver using GTx89634 15-PGDH antibody, C-term.

Antigen retrieval : Steamed antigen retrieval with citrate buffer pH 6

Dilution : 2.5µg/ml



For full product information, images and publications, please visit our [website](https://www.genetex.com).