

## Clik1 / STK35 antibody, C-term

Cat. No. GTX89642

Host	Goat
Clonality	Polyclonal
Isotype	IgG
Applications	WB, ICC/IF, IHC-P, FCM
Reactivity	Human, Mouse, Pig

Package  
100 µg

## Applications

## Application Note

\*Optimal dilutions/concentrations should be determined by the researcher.

Suggested dilution	Recommended dilution
WB	1-3µg/ml
ICC/IF	10µg/ml
IHC-P	10µg/ml
FCM	Assay dependent

**Note : Strong expression of the protein seen in the nucleus of U2OS cells.  
Human Testis shows granular cytoplasmic staining of Leydig cells.**

Not tested in other applications.

**Calculated MW** 58 kDa. ( [Note](#) )

## Properties

Form	Liquid
Buffer	TBS, 0.5% BSA
Preservative	0.02% Sodium azide
Storage	Store as concentrated solution. Centrifuge briefly prior to opening vial. For short-term storage (1-2 weeks), store at 4°C. For long-term storage, aliquot and store at -20°C or below. Avoid multiple freeze-thaw cycles.
Concentration	0.50 mg/ml (Please refer to the vial label for the specific concentration.)
Immunogen	Peptide with sequence ELETRMDQVTCAA, from the C Terminus of the protein sequence according to NP_543026.2.
Purification	Purified by ammonium sulphate precipitation followed by antigen affinity chromatography
Conjugation	Unconjugated



For full product information, images and publications, please visit our [website](#).

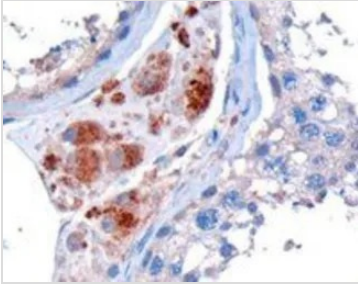
Date 2026 / 01 / 08 Page 1 of 2

For laboratory research use only. Not for any clinical, therapeutic, or diagnostic use in humans or animals. Not for animal or human consumption.

## Note

Purchasers shall not, and agree not to enable third parties to, analyze, copy, reverse engineer or otherwise attempt to determine the structure or sequence of the product.

## DATA IMAGES

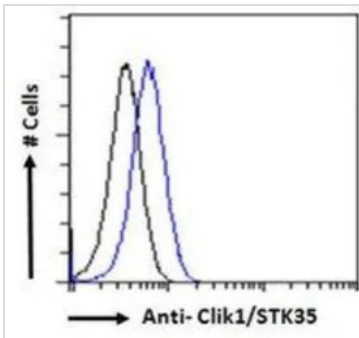


### GTX89642 IHC-P Image

IHC-P analysis of human testis using GTX89642 Clk1 / STK35 antibody, C-term.

Antigen retrieval : Tris/EDTA buffer pH 9

Dilution : 10µg/ml



### GTX89642 FCM Image

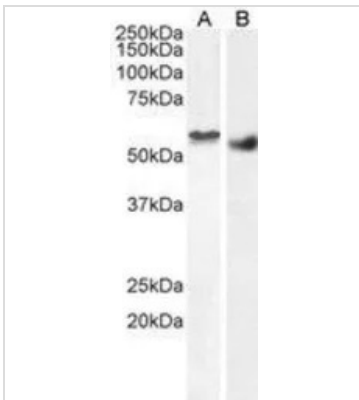
FACS analysis of PFA fixed HEK293 cells using GTX89642 Clk1 / STK35 antibody, C-term.

Blue : Primary antibody

Black : Isotype control

Permeabilization : 0.5% Triton

Dilution : 10µg/ml



### GTX89642 WB Image

WB analysis of HEK293 nuclear (A) and human breast cancer (B) lysate using GTX89642 Clk1 / STK35 antibody, C-term.

Dilution : 2µg/ml

Loading : 35µg protein in RIPA buffer



For full product information, images and publications, please visit our [website](https://www.genetex.com).