

SCARF1 antibody, Internal

Cat. No. GTX89666

Host	Goat
Clonality	Polyclonal
Isotype	IgG
Applications	WB, ICC/IF
Reactivity	Human

Package
100 µg

Applications

Application Note

*Optimal dilutions/concentrations should be determined by the researcher.

Suggested dilution	Recommended dilution
WB	0.3-1µg/ml
ICC/IF	Assay dependent

Not tested in other applications.

Calculated MW 87 kDa. ([Note](#))

Product Note

This antibody is expected to recognise all three reported isoforms (NP_003684.2; NP_663325.1; NP_663327.2). Epitope corresponding to aa 20-31, mapping to the mature human SCARF1 / SREC1 protein.

Properties

Form	Liquid
Buffer	TBS, 0.5% BSA
Preservative	0.02% Sodium azide
Storage	Store as concentrated solution. Centrifuge briefly prior to opening vial. For short-term storage (1-2 weeks), store at 4°C. For long-term storage, aliquot and store at -20°C or below. Avoid multiple freeze-thaw cycles.
Concentration	0.50 mg/ml (Please refer to the vial label for the specific concentration.)
Immunogen	Peptide with sequence SELDPKGQHVC, from the internal region of the protein sequence according to NP_003684.2; NP_663325.1; NP_663327.2.
Purification	Purified by ammonium sulphate precipitation followed by antigen affinity chromatography
Conjugation	Unconjugated



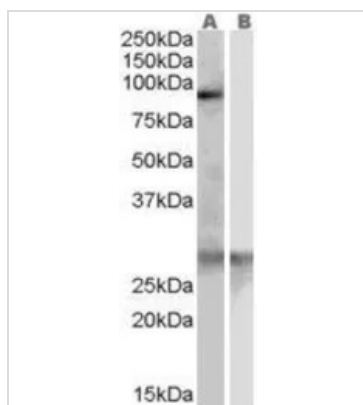
For full product information, images and publications, please visit our [website](#).

For laboratory research use only. Not for any clinical, therapeutic, or diagnostic use in humans or animals. Not for animal or human consumption.

Note

Purchasers shall not, and agree not to enable third parties to, analyze, copy, reverse engineer or otherwise attempt to determine the structure or sequence of the product.

DATA IMAGES

**GTX89666 WB Image**

WB analysis of human heart lysate with (B) and without (A) blocking with the immunising peptide using GTX89666 SCARF1 antibody, Internal.

Dilution : 0.3µg/ml

Loading : 35µg protein in RIPA buffer



For full product information, images and publications, please visit our [website](#).