

SART1 antibody, N-term

Cat. No. GTX89682

Host	Goat
Clonality	Polyclonal
Isotype	IgG
Applications	WB
Reactivity	Human

Package
100 µg

Applications

Application Note

*Optimal dilutions/concentrations should be determined by the researcher.

Suggested dilution	Recommended dilution
--------------------	----------------------

WB	0.03-0.1µg/ml
----	---------------

Not tested in other applications.

Calculated MW	90 kDa. (Note)
----------------------	----------------------------------

Product Note	This antibody is expected to recognise both the human SART1(800) and SART1(259) proteins.
---------------------	---

Properties

Form	Liquid
-------------	--------

Buffer	TBS, 0.5% BSA
---------------	---------------

Preservative	0.02% Sodium azide
---------------------	--------------------

Storage	Store as concentrated solution. Centrifuge briefly prior to opening vial. For short-term storage (1-2 weeks), store at 4°C. For long-term storage, aliquot and store at -20°C or below. Avoid multiple freeze-thaw cycles.
----------------	--

Concentration	0.50 mg/ml (Please refer to the vial label for the specific concentration.)
----------------------	---

Immunogen	Peptide with sequence GSSKKHRGEKAA-C, from the N Terminus of the protein sequence according to NP_005137.1.
------------------	---

Purification	Purified by ammonium sulphate precipitation followed by antigen affinity chromatography
---------------------	---

Conjugation	Unconjugated
--------------------	--------------

Note

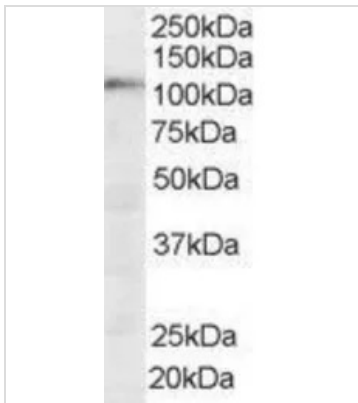
For laboratory research use only. Not for any clinical, therapeutic, or diagnostic use in humans or animals. Not for animal or human consumption.

Purchasers shall not, and agree not to enable third parties to, analyze, copy, reverse engineer or otherwise attempt to determine the structure or sequence of the product.



For full product information, images and publications, please visit our [website](#).

DATA IMAGES

**GTX89682 WB Image**

WB analysis of HeLa lysate using GTX89682 SART1 antibody, N-term.

Dilution : 0.03 μ g/ml

Loading : 35 μ g protein in RIPA buffer



For full product information, images and publications, please visit our [website](#).