

DKK1 antibody, C-term

Cat. No. GTX89683

Host	Goat
Clonality	Polyclonal
Isotype	IgG
Applications	WB, ICC/IF, IHC-P, FCM
Reactivity	Human

Package
100 µg

Applications

Application Note

*Optimal dilutions/concentrations should be determined by the researcher.

Suggested dilution	Recommended dilution
WB	1-3µg/ml
ICC/IF	Assay dependent
IHC-P	10µg/ml
FCM	Assay dependent

Not tested in other applications.

Calculated MW 29 kDa. ([Note](#))

Properties

Form	Liquid
Buffer	TBS, 0.5% BSA
Preservative	0.02% Sodium azide
Storage	Store as concentrated solution. Centrifuge briefly prior to opening vial. For short-term storage (1-2 weeks), store at 4°C. For long-term storage, aliquot and store at -20°C or below. Avoid multiple freeze-thaw cycles.
Concentration	0.50 mg/ml (Please refer to the vial label for the specific concentration.)
Immunogen	Peptide with sequence CDHHQASNSSLHT, from the C Terminus of the protein sequence according to NP_036374.1.
Purification	Purified by ammonium sulphate precipitation followed by antigen affinity chromatography
Conjugation	Unconjugated

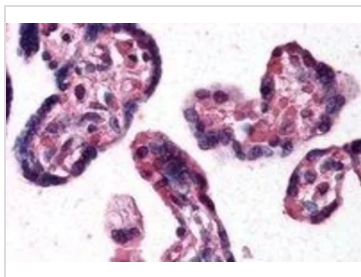
Note

For laboratory research use only. Not for any clinical, therapeutic, or diagnostic use in humans or animals. Not for animal or human consumption.

Purchasers shall not, and agree not to enable third parties to, analyze, copy, reverse engineer or otherwise attempt to determine the structure or sequence of the product.



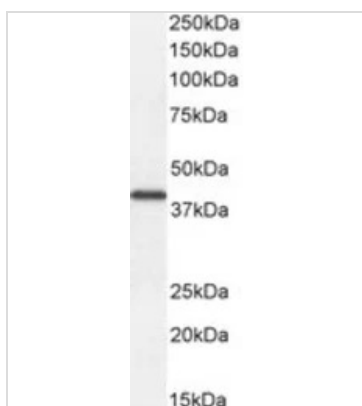
For full product information, images and publications, please visit our [website](#).

DATA IMAGES

GTX89683 IHC-P Image

IHC-P analysis of human placenta using GTX89683 DKK1 antibody, C-term.

Antigen retrieval : citrate buffer pH 6

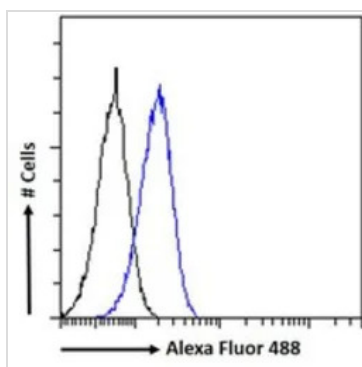
Dilution : 10µg/ml


GTX89683 WB Image

WB analysis of MCF7 whole cell lysate using GTX89683 DKK1 antibody, C-term.

Dilution : 1µg/ml

Loading : 35µg protein in RIPA buffer


GTX89683 FCM Image

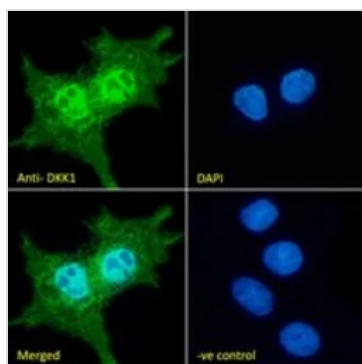
FACS analysis of PFA-fixed HepG2 cells using GTX89683 DKK1 antibody, C-term.

Blue line : Primary antibody

Black line : Unimmunized Goat IgG

Permeabilization : 0.5% Triton

Dilution : 10µg/ml


GTX89683 ICC/IF Image

ICC/IF analysis of PFA-fixed HepG2 cells using GTX89683 DKK1 antibody, C-term.

Green : Primary antibody

Blue : DAPI

Negative control : Unimmunized Goat IgG

Permeabilization : 0.15% Triton

Dilution : 10µg/ml



For full product information, images and publications, please visit our [website](http://www.genetex.com).