

alpha Smooth Muscle Actin antibody, N-term

Cat. No. GTX89701

Host	Goat
Clonality	Polyclonal
Isotype	IgG
Application	WB, ICC/IF, IHC-P, IHC-Fr
Reactivity	Human, Mouse, Rat

Reference (5)

Package

100 µg

APPLICATION

Application Note

*Optimal dilutions/concentrations should be determined by the researcher.

Suggested dilution	Recommended dilution
WB	0.1-0.5µg/ml
ICC/IF	Assay dependent
IHC-P	Assay dependent
IHC-Fr	Assay dependent

Not tested in other applications.

Calculated MW 42 kDa. ([Note](#))

PROPERTIES

Form	Liquid
Buffer	TBS, 0.5% BSA
Preservative	0.02% Sodium azide
Storage	Store as concentrated solution. Centrifuge briefly prior to opening vial. For short-term storage (1-2 weeks), store at 4°C. For long-term storage, aliquot and store at -20°C or below. Avoid multiple freeze-thaw cycles.
Concentration	0.50 mg/ml (Please refer to the vial label for the specific concentration.)
Immunogen	Peptide with sequence EEEDSTALVC, from the N Terminus of the protein sequence according to NP_001604.1; NP_001135417.1.
Purification	Purified by ammonium sulphate precipitation followed by antigen affinity chromatography
Conjugation	Unconjugated

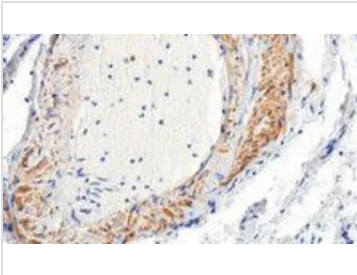


For full product information, images and publications, please visit our [website](#).

For laboratory research use only. Not for any clinical, therapeutic, or diagnostic use in humans or animals. Not for animal or human consumption.

Note

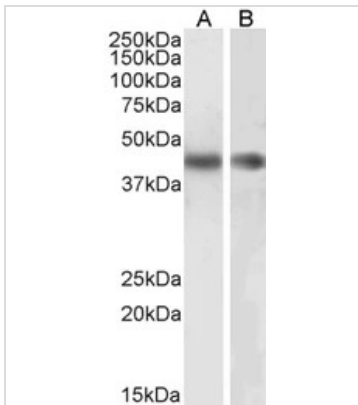
Purchasers shall not, and agree not to enable third parties to, analyze, copy, reverse engineer or otherwise attempt to determine the structure or sequence of the product.

DATA IMAGES

GTx89701 IHC-P Image

IHC-P analysis of human lung using GTx89701 alpha Smooth Muscle Actin antibody, N-term.

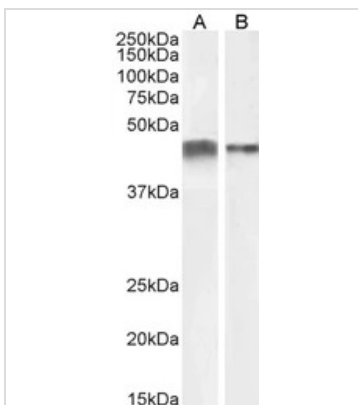
Antigen retrieval : citrate buffer pH 6

Dilution : 3.5µg/ml


GTx89701 WB Image

WB analysis of HeLa (A) and NIH3T3 (B) cell lysate (35µg protein in RIPA buffer) using GTx89701 alpha Smooth Muscle Actin antibody, N-term.

Dilution : 0.3µg/ml (HeLa) and 1µg/ml (NIH3T3)


GTx89701 WB Image

WB analysis of human (A) and mouse (B) heart lysate (35µg protein in RIPA buffer) using GTx89701 alpha Smooth Muscle Actin antibody, N-term.

Dilution : 0.1µg/ml (human heart) and 0.3µg/ml (mouse heart)



For full product information, images and publications, please visit our [website](https://www.genetex.com).