

KLF1 antibody, N-term

Cat. No. GTX89710

Host	Goat
Clonality	Polyclonal
Isotype	IgG
Application	IHC-P, ChIP assay
Reactivity	Human, Mouse

Package
100 µg

APPLICATION

Application Note

*Optimal dilutions/concentrations should be determined by the researcher.

Suggested dilution	Recommended dilution
IHC-P	5µg/ml
ChIP assay	Assay dependent

Not tested in other applications.

Calculated MW 38 kDa. ([Note](#))

PROPERTIES

Form	Liquid
Buffer	TBS, 0.5% BSA
Preservative	0.02% Sodium azide
Storage	Store as concentrated solution. Centrifuge briefly prior to opening vial. For short-term storage (1-2 weeks), store at 4°C. For long-term storage, aliquot and store at -20°C or below. Avoid multiple freeze-thaw cycles.
Concentration	0.50 mg/ml (Please refer to the vial label for the specific concentration.)
Immunogen	Peptide with sequence ATAETALPSISTLT-C, from the N Terminus of the protein sequence according to NP_006554.1.
Purification	Purified by ammonium sulphate precipitation followed by antigen affinity chromatography
Conjugation	Unconjugated

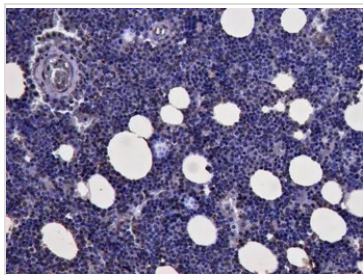
Note

For laboratory research use only. Not for any clinical, therapeutic, or diagnostic use in humans or animals. Not for animal or human consumption.

Purchasers shall not, and agree not to enable third parties to, analyze, copy, reverse engineer or otherwise attempt to determine the structure or sequence of the product.



For full product information, images and publications, please visit our [website](#).

DATA IMAGES

GTX89710 IHC-P Image

IHC-P analysis of human bone marrow using GTX89710 KLF1 antibody, N-term.

Antigen retrieval : citrate buffer pH 6

Dilution : 3µg/ml



For full product information, images and publications, please visit our [website](#).