

GAPDH antibody, C-term

Cat. No. GTX89740

Host	Goat
Clonality	Polyclonal
Isotype	IgG
Applications	WB, ICC/IF, IHC-P
Reactivity	Human, Mouse, Rat, Drosophila

References (1)

Package

100 µg

Applications

Application Note

*Optimal dilutions/concentrations should be determined by the researcher.

Suggested dilution	Recommended dilution
WB	0.01-0.5µg/ml
ICC/IF	5µg/ml
IHC-P	5µg/ml

Note : Strong expression of the protein seen in the cytoplasm of HeLa cells.

Not tested in other applications.

Calculated MW 36 kDa. ([Note](#))

Properties

Form	Liquid
Buffer	TBS, 0.5% BSA
Preservative	0.02% Sodium azide
Storage	Store as concentrated solution. Centrifuge briefly prior to opening vial. For short-term storage (1-2 weeks), store at 4°C. For long-term storage, aliquot and store at -20°C or below. Avoid multiple freeze-thaw cycles.
Concentration	0.50 mg/ml (Please refer to the vial label for the specific concentration.)
Immunogen	Peptide with sequence C-HQVSSDFNSDT, from the C Terminus of the protein sequence according to NP_002037.2.
Purification	Purified by ammonium sulphate precipitation followed by antigen affinity chromatography
Conjugation	Unconjugated

Note

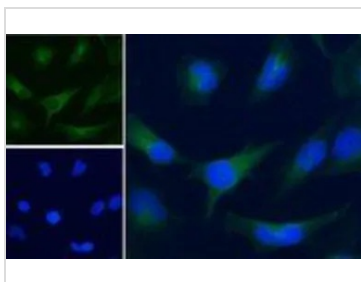
For laboratory research use only. Not for any clinical, therapeutic, or diagnostic use in humans or animals. Not for animal or human consumption.

Purchasers shall not, and agree not to enable third parties to, analyze, copy, reverse engineer or otherwise attempt to determine the structure or sequence of the product.



For full product information, images and publications, please visit our [website](#).

DATA IMAGES



GTX89740 ICC/IF Image

ICC/IF analysis of PFA fixed HeLa cells using GTX89740 GAPDH antibody, C-term.

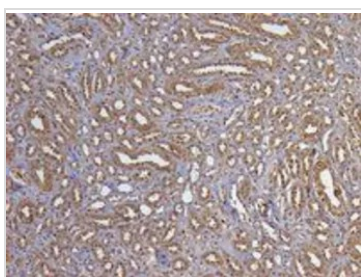
Green : Primary antibody

Blue : DAPI

Negative control : Unimmunized goat IgG

Permeabilization : 0.15% Triton

Dilution : 5µg/ml

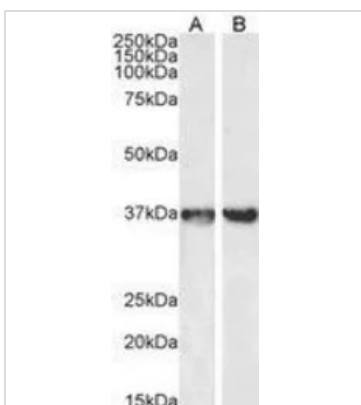


GTX89740 IHC-P Image

IHC-P analysis of human kidney using GTX89740 GAPDH antibody, C-term.

Antigen retrieval : citrate buffer pH 6

Dilution : 5µg/ml

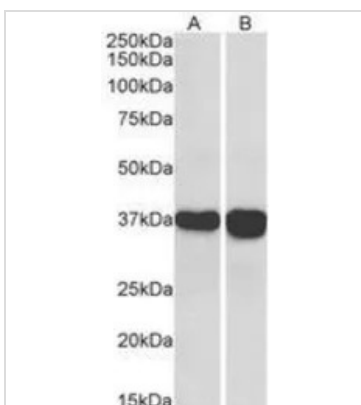


GTX89740 WB Image

WB analysis of mouse liver (A) and rat brain (B) lysate using GTX89740 GAPDH antibody, C-term.

Dilution : 0.5µg/ml

Loading : 35µg protein in RIPA buffer



GTX89740 WB Image

WB analysis of human liver (A) and tonsil (B) lysate using GTX89740 GAPDH antibody, C-term.

Dilution : 0.1µg/ml

Loading : 35µg protein in RIPA buffer



For full product information, images and publications, please visit our [website](#).