

CMG1 antibody, C-term

Cat. No. GTX89771

Host	Goat
Clonality	Polyclonal
Isotype	IgG
Applications	WB, ICC/IF, IHC-P
Reactivity	Human, Rat

Package
100 µg

Applications

Application Note

*Optimal dilutions/concentrations should be determined by the researcher.

Suggested dilution	Recommended dilution
WB	0.3-1µg/ml
ICC/IF	Assay dependent
IHC-P	5-10µg/ml

Note : Human Liver shows vesicular staining in cytoplasm of hepatocytes.

Not tested in other applications.

Calculated MW 69 kDa. ([Note](#))

Properties

Form	Liquid
Buffer	TBS, 0.5% BSA
Preservative	0.02% Sodium azide
Storage	Store as concentrated solution. Centrifuge briefly prior to opening vial. For short-term storage (1-2 weeks), store at 4°C. For long-term storage, aliquot and store at -20°C or below. Avoid multiple freeze-thaw cycles.
Concentration	0.50 mg/ml (Please refer to the vial label for the specific concentration.)
Immunogen	Peptide with sequence C-KTIVDALHSTSGN, from the C Terminus of the protein sequence according to NP_001092692.1; NP_001092693.1; NP_079379.2; AAK77221.1.
Purification	Purified by ammonium sulphate precipitation followed by antigen affinity chromatography
Conjugation	Unconjugated



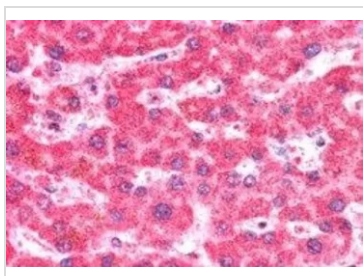
For full product information, images and publications, please visit our [website](#).

For laboratory research use only. Not for any clinical, therapeutic, or diagnostic use in humans or animals. Not for animal or human consumption.

Note

Purchasers shall not, and agree not to enable third parties to, analyze, copy, reverse engineer or otherwise attempt to determine the structure or sequence of the product.

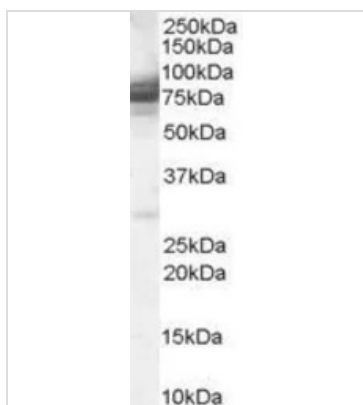
DATA IMAGES

**GTX89771 IHC-P Image**

IHC-P analysis of human liver using GTX89771 CMG1 antibody, C-term.

Antigen retrieval : citrate buffer pH 6

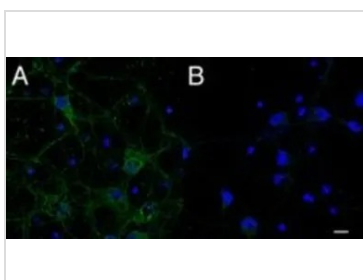
Dilution : 5µg/ml

**GTX89771 WB Image**

WB analysis of 293 lysate using GTX89771 CMG1 antibody, C-term.

Dilution : 0.3µg/ml

Loading : 35µg protein in RIPA buffer

**GTX89771 ICC/IF Image**

ICC/IF analysis of primary rat cortical neurons using GTX89771 CMG1 antibody, C-term.

Dilution : 2.5µg/ml

A: Primary antibody, B: control



For full product information, images and publications, please visit our [website](#).