

Iba1 (isoform 1 and 3) antibody, C-term

Cat. No. GTX89792

Host	Goat
Clonality	Polyclonal
Isotype	IgG
Applications	WB, IHC-P, IHC-Fr
Reactivity	Human, Mouse, Rat, Pig

References (3)

Package

100 µg

Applications

Application Note

*Optimal dilutions/concentrations should be determined by the researcher.

Suggested dilution	Recommended dilution
WB	0.5-3µg/ml
IHC-P	Assay dependent
IHC-Fr	Assay dependent

Not tested in other applications.

Calculated MW	17 kDa. (Note)
Product Note	This antibody is expected to recognize isoform 1 (NP_116573.1) and isoform 3 (NP_001614.3).

Properties

Form	Liquid
Buffer	TBS, 0.5% BSA
Preservative	0.02% Sodium azide
Storage	Store as concentrated solution. Centrifuge briefly prior to opening vial. For short-term storage (1-2 weeks), store at 4°C. For long-term storage, aliquot and store at -20°C or below. Avoid multiple freeze-thaw cycles.
Concentration	0.50 mg/ml (Please refer to the vial label for the specific concentration.)
Immunogen	Peptide with sequence C-TGPPAKKAISELP, from the C Terminus of the protein sequence according to NP_116573.1; NP_001614.3.
Purification	Purified by ammonium sulphate precipitation followed by antigen affinity chromatography
Conjugation	Unconjugated

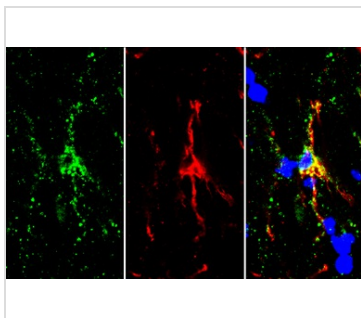


For full product information, images and publications, please visit our [website](#).

For laboratory research use only. Not for any clinical, therapeutic, or diagnostic use in humans or animals. Not for animal or human consumption.

Note

Purchasers shall not, and agree not to enable third parties to, analyze, copy, reverse engineer or otherwise attempt to determine the structure or sequence of the product.

DATA IMAGES

GTX89792 IHC-Fr Image

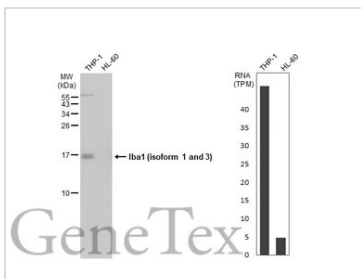
Iba1 (isoform 1 and 3) antibody, C-term detects Iba1 (isoform 1 and 3) protein by immunohistochemical analysis.

Sample: Frozen-sectioned mouse brain.

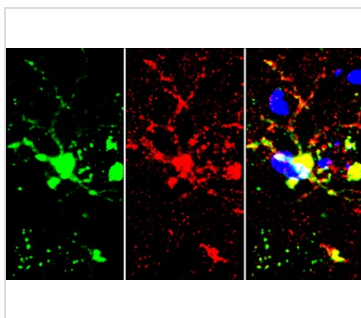
Green: Iba1 (isoform 1 and 3) stained by Iba1 (isoform 1 and 3) antibody, C-term (GTX89792) diluted at 1:250.

Red: TMEM119, stained by TMEM119 antibody (GTX134087) diluted at 1:250.

Blue: Hoechst 33342 staining.


GTX89792 WB Image

Various whole cell extracts (30 µg) were separated by 15% SDS-PAGE, and the membrane was blotted with Iba1 (isoform 1 and 3) antibody, C-term (GTX89792) diluted at 1:1000. The HRP-conjugated anti-rabbit IgG antibody (GTX213110-01) was used to detect the primary antibody. Corresponding RNA expression data for the same cell lines are based on Human Protein Atlas program.


GTX89792 IHC-Fr Image

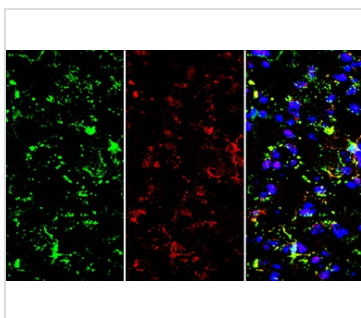
Iba1 (isoform 1 and 3) antibody, C-term detects Iba1 (isoform 1 and 3) protein by immunohistochemical analysis.

Sample: Frozen-sectioned mouse brain.

Green: Iba1 (isoform 1 and 3) stained by Iba1 (isoform 1 and 3) antibody, C-term (GTX89792) diluted at 1:250.

Red: TMEM119, stained by TMEM119 antibody (GTX134087) diluted at 1:250.

Blue: Hoechst 33342 staining.


GTX89792 IHC-Fr Image

Iba1 (isoform 1 and 3) antibody, C-term detects Iba1 (isoform 1 and 3) protein by immunohistochemical analysis.

Sample: Frozen-sectioned mouse brain.

Green: Iba1 (isoform 1 and 3) stained by Iba1 (isoform 1 and 3) antibody, C-term (GTX89792) diluted at 1:250.

Red: TMEM119, stained by TMEM119 antibody (GTX134087) diluted at 1:250.

Blue: Hoechst 33342 staining.



For full product information, images and publications, please visit our [website](https://www.genetex.com).