

RNF34 antibody, N-term

Cat. No. GTX89815

Host	Goat
Clonality	Polyclonal
Isotype	IgG
Applications	IHC-P
Reactivity	Human

Package
100 µg

Applications

Application Note

*Optimal dilutions/concentrations should be determined by the researcher.

Suggested dilution	Recommended dilution
IHC-P	4-8µg/ml

Note : Human Kidney shows cytoplasm staining in select DCT.

Not tested in other applications.

Product Note This antibody is expected to recognize both reported isoforms (NP_919247.1 and NP_079402.2).

Properties

Form	Liquid
Buffer	TBS, 0.5% BSA
Preservative	0.02% Sodium azide
Storage	Store as concentrated solution. Centrifuge briefly prior to opening vial. For short-term storage (1-2 weeks), store at 4°C. For long-term storage, aliquot and store at -20°C or below. Avoid multiple freeze-thaw cycles.
Concentration	0.50 mg/ml (Please refer to the vial label for the specific concentration.)
Immunogen	Peptide with sequence KAGATSMWASCC, from the N Terminus of the protein sequence according to NP_919247.1; NP_079402.2.
Purification	Purified by ammonium sulphate precipitation followed by antigen affinity chromatography
Conjugation	Unconjugated

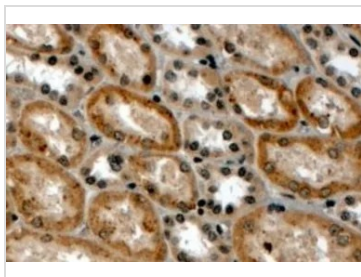
Note

For laboratory research use only. Not for any clinical, therapeutic, or diagnostic use in humans or animals. Not for animal or human consumption.

Purchasers shall not, and agree not to enable third parties to, analyze, copy, reverse engineer or otherwise attempt to determine the structure or sequence of the product.

For full product information, images and publications, please visit our [website](#).

DATA IMAGES



GTX89815 IHC-P Image

IHC-P analysis of human kidney using GTX89815 RNF34 antibody, N-term.

Antigen retrieval : Tris/EDTA buffer pH 9

Dilution : 4µg/ml



For full product information, images and publications, please visit our [website](#).