

ANP32B antibody, C-term

Cat. No. GTX89831

Host	Goat
Clonality	Polyclonal
Isotype	IgG
Applications	WB, IHC-P
Reactivity	Human, Mouse, Rat, Pig

Package
100 µg

Applications

Application Note

*Optimal dilutions/concentrations should be determined by the researcher.

Suggested dilution	Recommended dilution
WB	0.1-0.3µg/ml
IHC-P	3-5µg/ml

Note : Human Breast shows nuclear staining in lobular cells.

Not tested in other applications.

Calculated MW 29 kDa. ([Note](#))**Product Note** This antibody does NOT recognize the TNF family member also known as APRIL - Gene ID number 8741. However this antibody may cross-react with ANP32A (GeneID 8125).

Properties

Form	Liquid
Buffer	TBS, 0.5% BSA
Preservative	0.02% Sodium azide
Storage	Store as concentrated solution. Centrifuge briefly prior to opening vial. For short-term storage (1-2 weeks), store at 4°C. For long-term storage, aliquot and store at -20°C or below. Avoid multiple freeze-thaw cycles.
Concentration	0.50 mg/ml (Please refer to the vial label for the specific concentration.)
Immunogen	Peptide with sequence C-KRKRETDDEGEDD, from the C Terminus of the protein sequence according to NP_006392.1.
Purification	Purified by ammonium sulphate precipitation followed by antigen affinity chromatography
Conjugation	Unconjugated



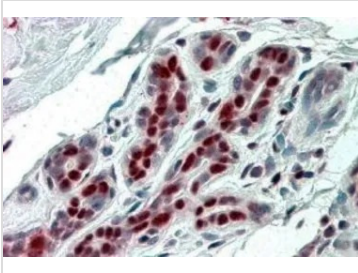
For full product information, images and publications, please visit our [website](#).

For laboratory research use only. Not for any clinical, therapeutic, or diagnostic use in humans or animals. Not for animal or human consumption.

Note

Purchasers shall not, and agree not to enable third parties to, analyze, copy, reverse engineer or otherwise attempt to determine the structure or sequence of the product.

DATA IMAGES

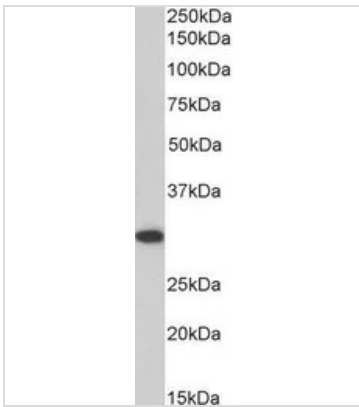


GTx89831 IHC-P Image

IHC-P analysis of human breast using GTX89831 ANP32B antibody, C-term.

Antigen retrieval : citrate buffer pH 6

Dilution : 3.8µg/ml

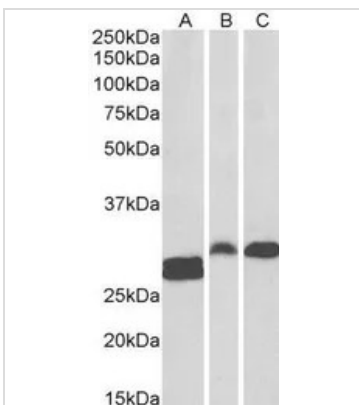


GTx89831 WB Image

WB analysis of NIH-3T3 cell lysate using GTX89831 ANP32B antibody, C-term.

Dilution : 0.1µg/ml

Loading : 35µg protein in RIPA buffer



GTx89831 WB Image

WB analysis of human tonsil (A) and rat (B) and pig (C) spleen lysate using GTX89831 ANP32B antibody, C-term.

Dilution : 0.1µg/ml

Loading : 35µg protein in RIPA buffer



For full product information, images and publications, please visit our [website](https://www.genetex.com).