

Annexin XI antibody, N-term

Cat. No. GTX89851

| | |
|--------------|------------|
| Host | Goat |
| Clonality | Polyclonal |
| Isotype | IgG |
| Applications | WB, IHC-P |
| Reactivity | Human |

Package
100 µg

Applications

Application Note

*Optimal dilutions/concentrations should be determined by the researcher.

| Suggested dilution | Recommended dilution |
|--------------------|----------------------|
| WB | 0.01-0.03µg/ml |
| IHC-P | 3-5µg/ml |

Note : Human Placenta shows strong staining of Basement Membrane in trophoblasts.

Not tested in other applications.

Calculated MW 54 kDa. ([Note](#))

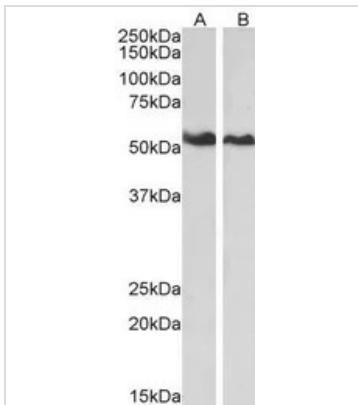
Properties

| | |
|---------------|--|
| Form | Liquid |
| Buffer | TBS, 0.5% BSA |
| Preservative | 0.02% Sodium azide |
| Storage | Store as concentrated solution. Centrifuge briefly prior to opening vial. For short-term storage (1-2 weeks), store at 4°C. For long-term storage, aliquot and store at -20°C or below. Avoid multiple freeze-thaw cycles. |
| Concentration | 0.50 mg/ml (Please refer to the vial label for the specific concentration.) |
| Immunogen | Peptide with sequence YPGYPPPPGGYPP-C, from the N Terminus of the protein sequence according to NP_001148.1. |
| Purification | Purified by ammonium sulphate precipitation followed by antigen affinity chromatography |
| Conjugation | Unconjugated |
| Note | For laboratory research use only. Not for any clinical, therapeutic, or diagnostic use in humans or animals. Not for animal or human consumption. Purchasers shall not, and agree not to enable third parties to, analyze, copy, reverse engineer or otherwise attempt to determine the structure or sequence of the product. |



For full product information, images and publications, please visit our [website](#).

DATA IMAGES

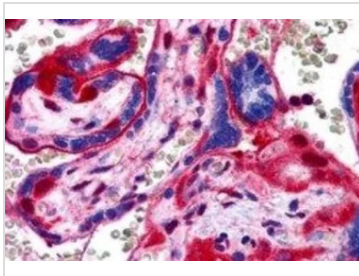


GTx89851 WB Image

WB analysis of HeLa (A) and Jurkat (B) lysates using GTx89851 Annexin XI antibody, N-term.

Dilution : 0.01µg/ml

Loading : 35µg protein in RIPA buffer



GTx89851 IHC-P Image

IHC-P analysis of human placenta using GTx89851 Annexin XI antibody, N-term.

Antigen retrieval : citrate buffer pH 6

Dilution : 3.8µg/ml



For full product information, images and publications, please visit our [website](https://www.genetex.com).