

## UBE2C antibody, C-term

Cat. No. GTX89866

Host	Goat
Clonality	Polyclonal
Isotype	IgG
Applications	WB, ICC/IF, FCM, IP
Reactivity	Human

Package  
100 µg

## Applications

## Application Note

\*Optimal dilutions/concentrations should be determined by the researcher.

Suggested dilution	Recommended dilution
WB	1-3µg/ml
ICC/IF	10µg/ml
FCM	Assay dependent
IP	Assay dependent

**Note : Strong expression of the protein seen in the cytoplasm of U2OS and MCF7 cells.**

Not tested in other applications.

**Calculated MW** 20 kDa. ( [Note](#) )

**Product Note** This antibody is expected to recognise all reported isoforms.

## Properties

Form	Liquid
Buffer	TBS, 0.5% BSA
Preservative	0.02% Sodium azide
Storage	Store as concentrated solution. Centrifuge briefly prior to opening vial. For short-term storage (1-2 weeks), store at 4°C. For long-term storage, aliquot and store at -20°C or below. Avoid multiple freeze-thaw cycles.
Concentration	0.50 mg/ml (Please refer to the vial label for the specific concentration.)
Immunogen	Peptide with sequence C-QETYSKQVTSQEP, from the C Terminus of the protein sequence according to NP_008950.1; NP_861515.1; NP_861516.1; NP_861517.1; NP_861518.1; NP_001268670.1.
Purification	Purified by ammonium sulphate precipitation followed by antigen affinity chromatography
Conjugation	Unconjugated



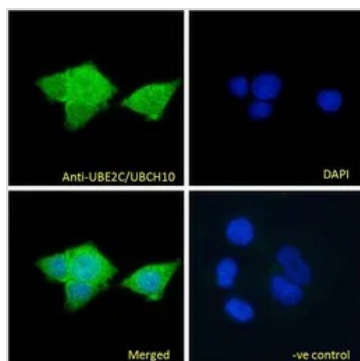
For full product information, images and publications, please visit our [website](#).

For laboratory research use only. Not for any clinical, therapeutic, or diagnostic use in humans or animals. Not for animal or human consumption.

## Note

Purchasers shall not, and agree not to enable third parties to, analyze, copy, reverse engineer or otherwise attempt to determine the structure or sequence of the product.

## DATA IMAGES



### GTx89866 ICC/IF Image

ICC/IF analysis of PFA fixed MCF7 cells using GTx89866 UBE2C antibody, C-term.

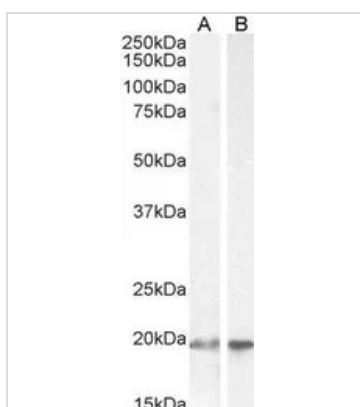
Green : Primary antibody

Blue : DAPI

Negative control : Unimmunized goat IgG

Permeabilization : 0.15% Triton

Dilution : 10µg/ml

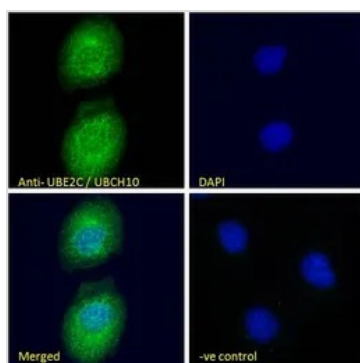


### GTx89866 WB Image

WB analysis of HEK293 (A) and HeLa (B) cell lysate using GTx89866 UBE2C antibody, C-term.

Dilution : 2µg/ml

Loading : 35µg protein in RIPA buffer



### GTx89866 ICC/IF Image

ICC/IF analysis of PFA fixed U2OS cells using GTx89866 UBE2C antibody, C-term.

Green : Primary antibody

Blue : DAPI

Negative control : Unimmunized goat IgG

Permeabilization : 0.15% Triton

Dilution : 10µg/ml



For full product information, images and publications, please visit our [website](https://www.genetex.com).