

IRF5 antibody, C-term

Cat. No. GTX89902

Host	Goat
Clonality	Polyclonal
Isotype	IgG
Applications	WB, ChIP assay, IHC
Reactivity	Human

Package
100 µg

Applications

Application Note

*Optimal dilutions/concentrations should be determined by the researcher.

Suggested dilution	Recommended dilution
WB	0.1-0.3µg/ml
ChIP assay	Assay dependent
IHC	Assay dependent

Not tested in other applications.

Calculated MW	56 kDa. (Note)
Product Note	This antibody is expected to recognize all four reported isoforms (NP_002191.1; NP_116032.1; NP_001092097.1; NP_001092099.1).

Properties

Form	Liquid
Buffer	TBS, 0.5% BSA
Preservative	0.02% Sodium azide
Storage	Store as concentrated solution. Centrifuge briefly prior to opening vial. For short-term storage (1-2 weeks), store at 4°C. For long-term storage, aliquot and store at -20°C or below. Avoid multiple freeze-thaw cycles.
Concentration	0.50 mg/ml (Please refer to the vial label for the specific concentration.)
Immunogen	Peptide with sequence C-QGPWPMHPAGMQ, from the C Terminus of the protein sequence according to NP_002191.1; NP_116032.1; NP_001092097.1; NP_001092099.1.
Purification	Purified by ammonium sulphate precipitation followed by antigen affinity chromatography
Conjugation	Unconjugated



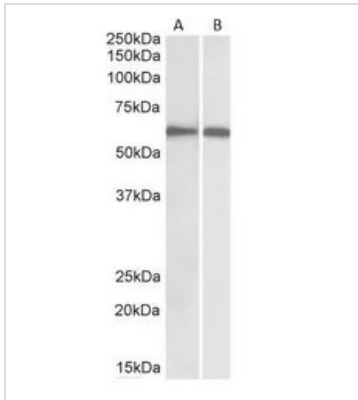
For full product information, images and publications, please visit our [website](#).

For laboratory research use only. Not for any clinical, therapeutic, or diagnostic use in humans or animals. Not for animal or human consumption.

Note

Purchasers shall not, and agree not to enable third parties to, analyze, copy, reverse engineer or otherwise attempt to determine the structure or sequence of the product.

DATA IMAGES



GTX89902 WB Image

WB analysis of human spleen (A) and peripheral blood lymphocytes (B) lysates using GTX89902 IRF5 antibody, C-term.

Dilution : 1µg/ml

Loading : 30µg protein in RIPA buffer



For full product information, images and publications, please visit our [website](#).