

SOCS1 antibody, C-term

Cat. No. GTX89995

Host	Goat
Clonality	Polyclonal
Isotype	IgG
Applications	WB, ICC/IF, IHC-P, FCM
Reactivity	Human, Mouse, Pig

Package
100 µg

Applications

Application Note

*Optimal dilutions/concentrations should be determined by the researcher.

Suggested dilution	Recommended dilution
WB	0.1-1µg/ml
ICC/IF	Assay dependent
IHC-P	Assay dependent
FCM	10µg/ml

Note : Permeabilization : 0.5% Triton

Not tested in other applications.

Calculated MW 24 kDa. ([Note](#))

Properties

Form	Liquid
Buffer	TBS, 0.5% BSA
Preservative	0.02% Sodium azide
Storage	Store as concentrated solution. Centrifuge briefly prior to opening vial. For short-term storage (1-2 weeks), store at 4°C. For long-term storage, aliquot and store at -20°C or below. Avoid multiple freeze-thaw cycles.
Concentration	0.50 mg/ml (Please refer to the vial label for the specific concentration.)
Immunogen	Peptide with sequence C-VLRDYLSSFPFQI, from the C Terminus of the protein sequence according to NP_003736.1.
Purification	Purified by ammonium sulphate precipitation followed by antigen affinity chromatography
Conjugation	Unconjugated



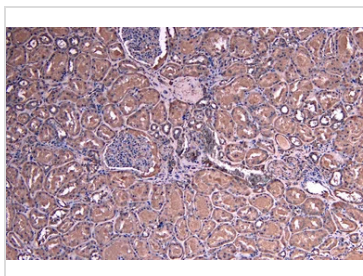
For full product information, images and publications, please visit our [website](#).

For laboratory research use only. Not for any clinical, therapeutic, or diagnostic use in humans or animals. Not for animal or human consumption.

Note

Purchasers shall not, and agree not to enable third parties to, analyze, copy, reverse engineer or otherwise attempt to determine the structure or sequence of the product.

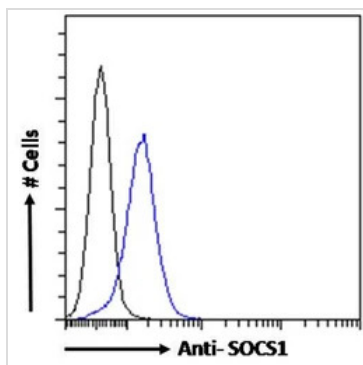
DATA IMAGES

**GTX89995 IHC-P Image**

IHC-P analysis of paraffin embedded human kidney using GTX89995 SOCS1 antibody, C-term.

Antigen retrieval : Heat induced antigen retrieval with citrate buffer pH 6

Dilution : 8µg/ml

**GTX89995 FCM Image**

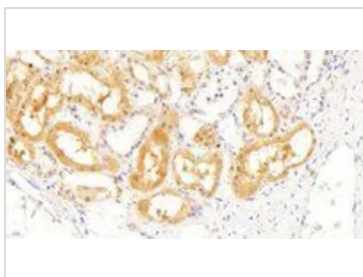
FACS analysis of PFA fixed HEK293 cells using GTX89995 SOCS1 antibody, C-term.

Blue : Primary antibody

Black : Isotype control

Permeabilization : 0.5% Triton

Dilution : 1µg/ml

**GTX89995 IHC-P Image**

IHC-P analysis of human kidney using GTX89995 SOCS1 antibody, C-term.

Antigen retrieval : citrate buffer pH 6

Dilution : 2.5µg/ml



For full product information, images and publications, please visit our [website](#).