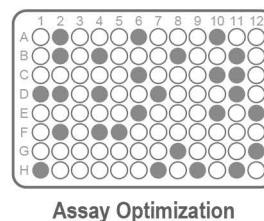
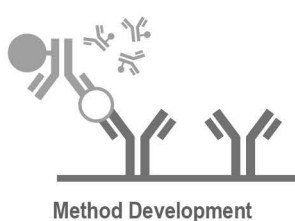
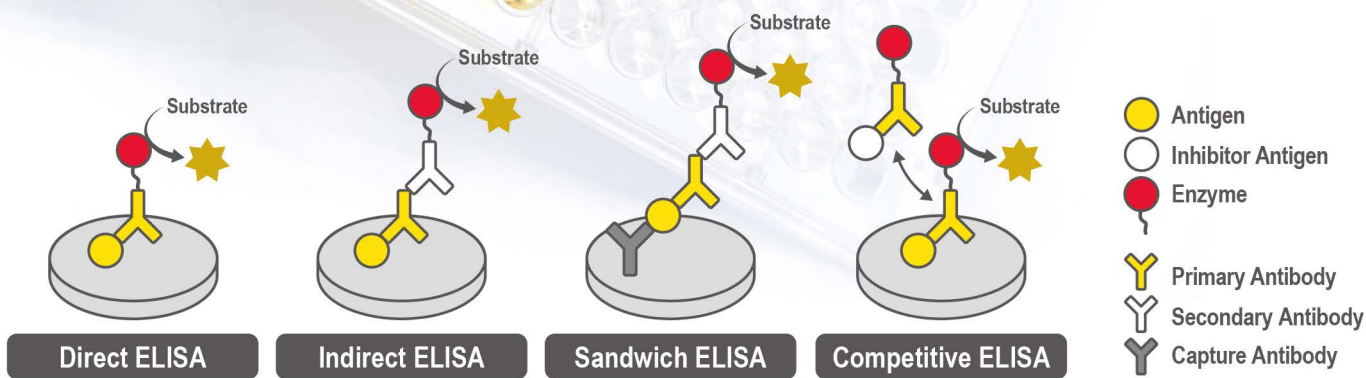


# Enzyme-Linked Immunosorbent Assay (ELISA) Development Service

- Your Expertise
- Our Antibodies
- Accelerated Discovery



## Antibody Screening

- Select from GeneTex’s extensive polyclonal, monoclonal, and recombinant antibody catalog
  - High Reproducibility
  - High Specificity
  - Validated with ELISA

## Method Development

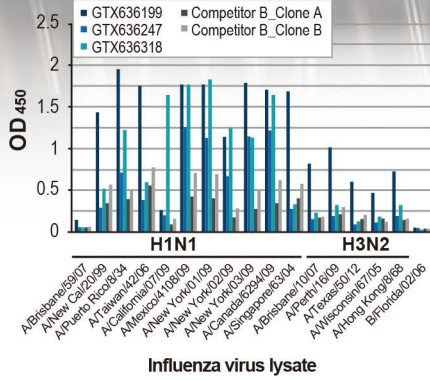
	ELISA Type	Antibody Pairing	Antibody Labeling	Sample Type	Controls or Standards
<b>Input</b>	<ul style="list-style-type: none"> <li>• Direct</li> <li>• Indirect</li> <li>• Sandwich</li> <li>• Competitive</li> </ul>	<ul style="list-style-type: none"> <li>• For Sandwich ELISA development</li> </ul>	<ul style="list-style-type: none"> <li>• Horseradish peroxidase, HRP</li> <li>• Biotin</li> <li>• Other</li> </ul>	<ul style="list-style-type: none"> <li>• Serum</li> <li>• Plasma</li> <li>• Cell culture supernatant</li> </ul>	<ul style="list-style-type: none"> <li>• High quality proteins and antibodies</li> </ul>
<b>Output</b>	<ul style="list-style-type: none"> <li>• Qualitative, quantitative or semi-quantitative results</li> <li>• Data interpretation</li> </ul>	<ul style="list-style-type: none"> <li>• Matched antibody pair</li> </ul>	<ul style="list-style-type: none"> <li>• Conjugate working conditions</li> </ul>	<ul style="list-style-type: none"> <li>• Assay reagents</li> <li>• Sample preparation and pre-dilution</li> </ul>	<ul style="list-style-type: none"> <li>• Cut-off value or standard curve</li> <li>• Lyophilized controls or standards</li> </ul>
Analytical sensitivity (limit of detection, LoD), analytical specificity, intra- and inter- assay precision, recovery and linearity					

## Assay Optimization

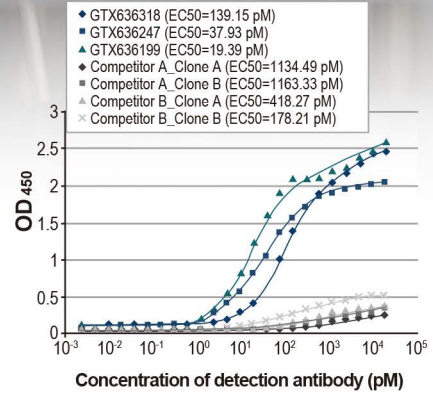
- According to intended use, guideline & regulation
  - ELISA kit manufacturing
  - Translation to automated microplate coating
  - Customized CoA

# Direct / Indirect ELISA

## • Virus subtype detection

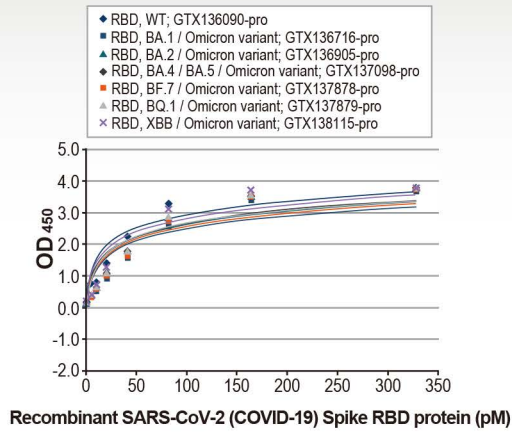


## • ED<sub>50</sub> determination

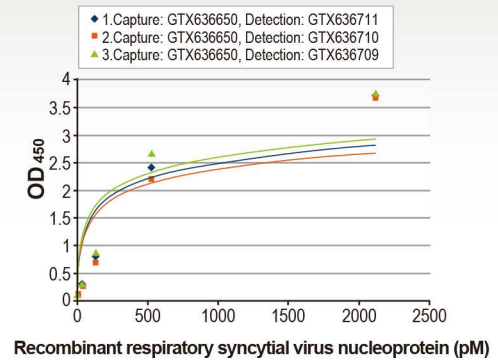


# Sandwich ELISA

## • Target protein detection and quantitation



## • Antibody pair screening



# Competitive ELISA

## • Neutralizing antibody evaluation

