

Custom Antibody Services

Your Idea, Our Laboratory

Let GeneTex become your personal custom antibody production facility. We have produced over 35,000 polyclonal antibodies. Use our experience and expertise to help advance your research.



Antigen Preparation



Immunization



Serum Titer Report



Antibody Purification



Shipment



Datasheet

	Package I	Package II	Package III
Antigen preparation	Protein	Peptide	Modified-peptide
Antigen design	●	●	●
Protein expression and purification	●		
Peptide synthesis		●	●
Peptide conjugation to carrier protein		●	●
Immunization	●	●	●
Antigen-affinity antibody purification	●	●	
Antigen-affinity double specific purification			●
Turn-around time	14~15 weeks	14~15 weeks	15~16 weeks

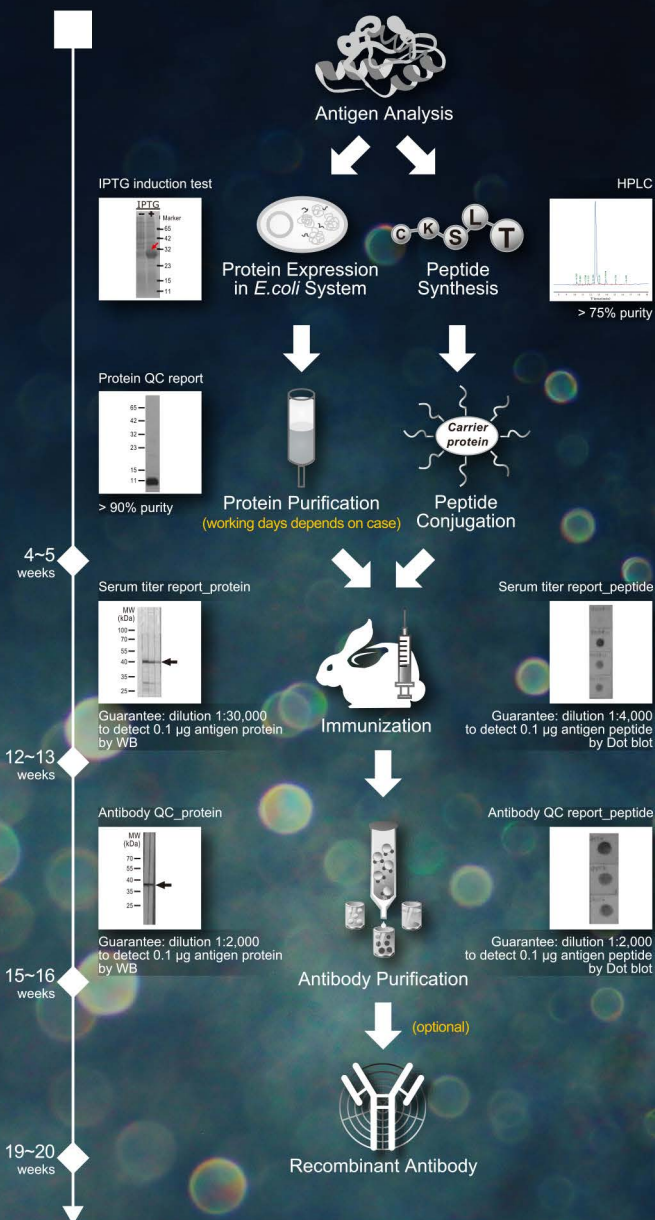
GeneTex

Tel 886.3.6208988

Fax 886.3.6208989

Address 6F-2, No.89, Dongmei Rd., Hsinchu 300, Taiwan (R.O.C.)

E-mail international@genetex.com



● **Target Protein Analysis**

- Free antigen analysis and antigen sequence design.

● **Antigen Preparation**

- Recombinant protein: > 90% purity.
- Peptide: > 75% purity; peptide conjugated to carrier protein.
- Modified peptide: > 75% purity; peptide conjugated to carrier protein.

● **Immunization**

- Three rounds of immunization.
- Serum titer guarantee for recombinant protein antigen: Antiserum able to recognize 0.1 µg of protein antigen in western blot at 1:30,000 dilution.
- Serum titer guarantee for peptide antigen: Antiserum able to recognize 0.1 µg of peptide antigen in dot blot at 1:4,000 dilution.
- Bleed:
40 ml antiserum for protein and peptide antigens.
80 ml antiserum for modified peptide antigen.

● **Antibody Purification**

- Antigen-affinity antibody purification: for protein and peptide antigens.
- Antigen-affinity double-specific antibody purification: for modified peptide antigen.

● **Recombinant Antibody**

- A FACS-based approach to isolate single B cells from an immunized animal.
- The supply of the cloned antibody is inexhaustible with exceptional reproducibility.

see more

