

Lateral Flow Antibody Pairs for Respiratory Infectious Disease

Influenza Virus

- Lipid Envelope
- Viral RNAs (vRNAs)
- Polymerase Basic 2
- Polymerase Basic 1
- Polymerase Acidic
- Hemagglutinin
- Nucleoprotein
- Neuraminidase
- Matrix (M1, M2)
- Non-structural Proteins (NS1, NS2)

Your Expertise

Our Antibodies

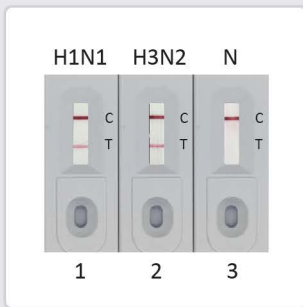
Accelerated Discovery

Recommended Recombinant Antibody Pairs

Target	Capture Clone / Cat. No.	Detection Clone / Cat. No.
Influenza A Virus	HL1089 (GTX636247)	HL1953 (GTX637790)
	HL1078 (GTX636199)	
Influenza B Virus	HL1069 (GTX636100)	HL1068 (GTX636099)
SARS-CoV-2	HL455 (GTX635688)	HL5410 (GTX635685)
		HL448 (GTX635686)
RSV	HL1248 (GTX636650)	HL1246 (GTX636648)

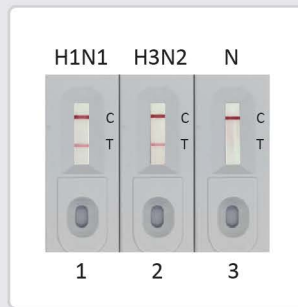
www.genetex.com

Influenza A Virus (FluA)



- Samples :**
- Influenza A virus Nucleoprotein (A/California/2009 (H1N1)) (GTX135904-pro)
 - Influenza A virus Nucleoprotein (A/Hong Kong/2671/2019 (H3N2)) (GTX136317-pro)
 - Lysis buffer

Recommended Pair for Lateral Flow Assay
Influenza A Virus Pair 1
Detection: Clone HL1953 (GTX637790)
Capture: Clone HL1078 (GTX636199)

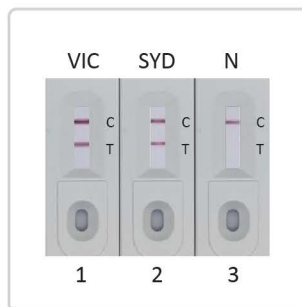


- Samples :**
- Influenza A virus Nucleoprotein (A/California/2009 (H1N1)) (GTX135904-pro)
 - Influenza A virus Nucleoprotein (A/Hong Kong/2671/2019 (H3N2)) (GTX136317-pro)
 - Lysis buffer

Recommended Pair for Lateral Flow Assay
Influenza A Virus Pair 2
Detection: Clone HL1953 (GTX637790)
Capture: Clone HL1089 (GTX636247)

Figure 1: Detection of recombinant influenza A virus nucleoprotein (NP) by lateral flow assay using the indicated recombinant rabbit monoclonal antibody pairs.

Influenza B Virus (FluB)



- Samples :**
- Influenza B virus Nucleoprotein (B/Victoria/02/1987) (GTX136277-pro)
 - Influenza B virus Nucleoprotein (B/Sydney/3/2004) (GTX135867-pro)
 - Lysis buffer

Recommended Pair for Lateral Flow Assay
Influenza B Virus Pair
Detection: Clone HL1068 (GTX636099)
Capture: Clone HL1069 (GTX636100)

Figure 2: Detection of recombinant influenza B virus nucleoprotein (NP) by lateral flow assay using the indicated recombinant rabbit monoclonal antibody pair.

SARS-CoV-2 (COVID-19)

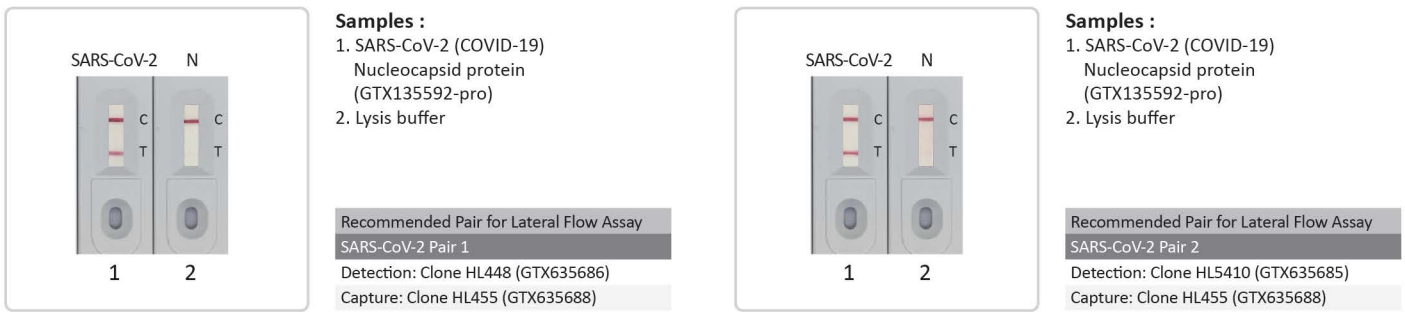


Figure 3: Detection of recombinant SARS-CoV-2 nucleocapsid protein (NP) by lateral flow assay using the indicated recombinant rabbit monoclonal antibody pairs.

Note: These pairs can detect the Omicron subvariants.

Respiratory Syncytial Virus (RSV)

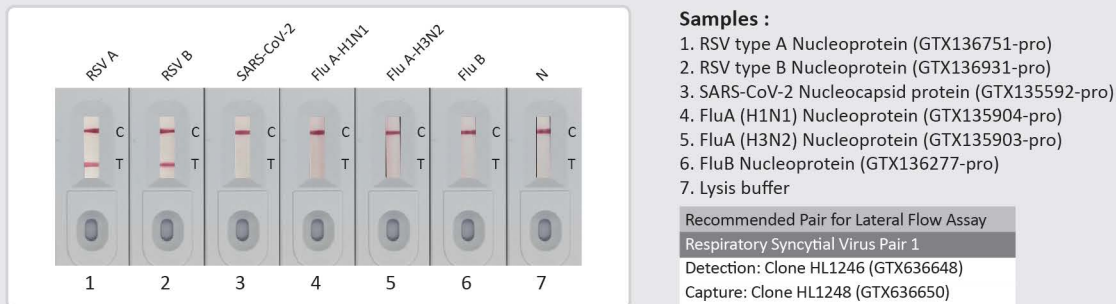


Figure 4: Detection of recombinant RSV type A or RSV type B nucleoproteins (NP) and other respiratory viruses (SARS-CoV-2, FluA, FluB) NP by lateral flow assay using the indicated recombinant rabbit monoclonal antibody pair.

Featured Recombinant Proteins

Target	Cat. No.	Product Name	Expression System
Influenza A	GTX135868-pro	Influenza A Virus Nucleoprotein (A/WSN/1933 (H1N1)), DDDDK Tag	HEK293
	GTX135904-pro	Influenza A Virus Nucleoprotein (A/California/2009 (H1N1)), DDDDK Tag	HEK293
	GTX136317-pro	Influenza A Virus Nucleoprotein (A/Hong Kong/2671/2019 (H3N2)), DDDDK Tag	HEK293
	GTX135903-pro	Influenza A Virus Nucleoprotein (A/Kansas/2017/H3N2), DDDDK Tag	HEK293
Influenza B	GTX135867-pro	Influenza B Virus Nucleoprotein (B/Sydney/3/2004), DDDDK Tag	HEK293
	GTX136277-pro	Influenza B Virus Nucleoprotein (B/Victoria/02/1987), DDDDK Tag	HEK293
SARS-CoV-2	GTX135592-pro	SARS-CoV-2 Nucleocapsid protein, His tag	HEK293
	GTX136779-pro	SARS-CoV-2 Nucleocapsid protein, Omicron / BA.1 variant, His tag	HEK293
	GTX137219-pro	SARS-CoV-2 Nucleocapsid protein, Omicron / BA.2 / BA.5 variant, His tag	HEK293
	GTX137882-pro	SARS-CoV-2 Nucleocapsid protein, Omicron / BF.7 variant, His tag	HEK293
	GTX137883-pro	SARS-CoV-2 Nucleocapsid protein, Omicron / BQ.1 variant, His tag	HEK293
MERS-CoV	GTX135653-pro	MERS-CoV Nucleocapsid protein, DDDDK tag	HEK293
RSV	GTX136751-pro	Respiratory Syncytial Virus type A Nucleoprotein, DDDDK tag	HEK293
	GTX136931-pro	Respiratory Syncytial Virus type B Nucleoprotein, DDDDK tag	HEK293