

Loading Controls

- Your Expertise
- Our Antibodies
- Accelerated Discovery

www.genetex.com



Loading controls are used to ensure that equal amounts of each protein sample are loaded into the wells of an SDS-PAGE gel. Selecting a proper loading control whose signal remains constant under the tested conditions is essential in order to properly interpret the results of the western blot experiment.

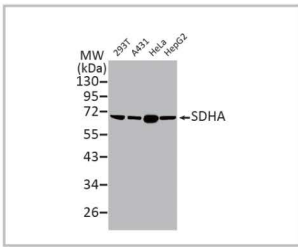
Why Choose GeneTex Loading Controls?

- ✓ Validated in Multiple Species
- ✓ Well-Cited in Publications
- ✓ Suitable for Various Applications
- ✓ Products for Every MW Range

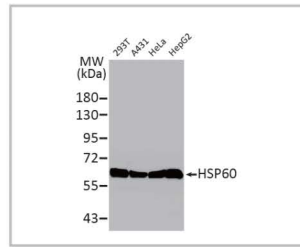
MW (kDa)	Cytosol	Nucleus	Cytoskeleton	Mitochondria	Serum
>80 kDa			Vinculin: 124kDa GTX109749 <i>Oncogenesis</i>		
70-80 kDa		Nuclear Matrix Protein p84: 76kDa GTX102919 <i>EMBO J.</i>		SDHA: 73kDa GTX632635, GTX101689 <i>Commun Biol.</i>	Transferrin: 77kDa GTX112729 <i>GLIA</i>
60-70 kDa		Lamin B1: 66kDa GTX103292 <i>Nat Commun., Cell Rep.</i>		HSP60: 61kDa GTX110089 <i>Phytomedicine.</i>	Albumin: 69kDa GTX102419 <i>Nature, Biomaterials</i>
50-60 kDa			alpha Tubulin: 55kDa GTX628802 <i>Nat Commun., Circ Res.</i> beta Tubulin: 50kDa GTX101279 <i>Nat Genet., Nat Commun.</i>		
40-50 kDa			beta Actin: 42kDa GTX629630 <i>Nat Commun., Cell Rep.</i>		
30-40 kDa	GAPDH: 36kDa GTX627408, GTX100118 <i>Cell, Nature</i>	TBP/ TFIID: 38kDa GTX634166		VDAC1: 31kDa GTX114187 <i>Redox Biol., Int. J. Biol. Sci.</i>	
20-30 kDa		PCNA: 29kDa GTX100539 <i>Nat Methods., Nat Commun.</i>		COX4: 20kDa GTX628901 <i>Br J Cancer.</i>	
<20 kDa	Cyclophilin A: 18kDa GTX104698 <i>Pharmacol Res.</i>	Histone H3: 15kDa GTX122148 <i>Cancer Cell., Cell Rep.</i>	Cofilin: 19kDa GTX632582	Cytochrome C: 12kDa GTX633691, GTX108585 <i>Reproduction</i>	

Selected Products

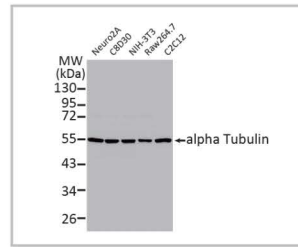
Recombinant
Citation Support
KO/KD Validation
IP/MS Analysis
Orthogonal Validation



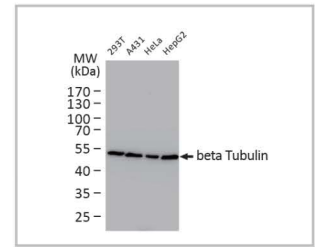
SDHA antibody [HL1117] (GTX636335)



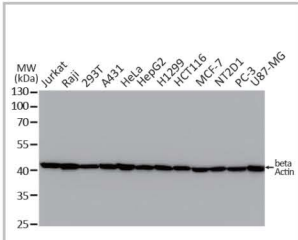
HSP60 antibody (GTX110089)



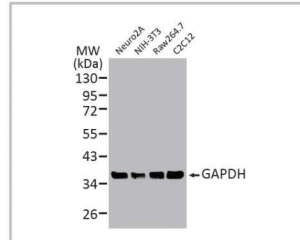
alpha Tubulin antibody [GT114] (GTX628802)



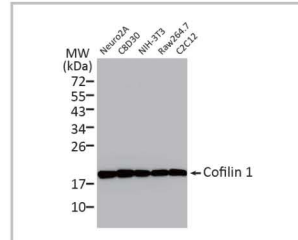
beta Tubulin antibody (GTX101279)



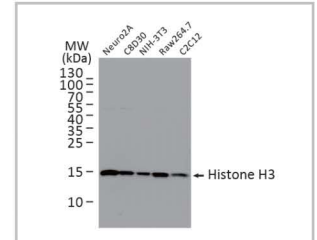
beta Actin antibody [GT5512] (GTX629630)



GAPDH antibody [GT239] (GTX627408)



Cofilin 1 antibody [GT217] (GTX632582)



Histone H3 antibody (GTX122148)

MW

large
small

Cat. No.	Product Name	Clonality	Reactivity	Applications
GTX634535	Vinculin antibody [GT3210]	Ms mAb	Hu,Ms,Rat	WB, IHC-P
GTX109749	Vinculin antibody [N3C1], Internal	Rb pAb	Hu,Ms,Rat	WB, IHC-P
GTX113294	Vinculin antibody [N1N3]	Rb pAb	Hu,Ms,Rat	WB, ICC/IF, IHC-P
GTX112729	Transferrin antibody [N3C2], Internal	Rb pAb	Hu,Rat	WB, ICC/IF, IHC-P
GTX102919	Nuclear Matrix Protein p84 antibody [C1C3]	Rb pAb	Hu,Ms,Rat,Bird	WB, ICC/IF, IHC-P, IP, ChIP assay
GTX636335	SDHA antibody [HL1117]	Rec Rb mAb	Hu,Ms,Rat	WB, ICC/IF, IHC-P
GTX632636	SDHA antibody [GT20710]	Ms mAb	Hu,Ms,Rat	WB, ICC/IF, IHC-P
GTX101689	SDHA antibody	Rb pAb	Hu,Ms,Rat	WB, ICC/IF, IHC-P
GTX102419	Albumin antibody	Rb pAb	Hu,Ms,Rat	WB, ICC/IF, IHC-P, IHC-Fr, IHC
GTX103292	Lamin B1 antibody	Rb pAb	Hu,Ms,Hm	WB, IHC-P, IP
GTX110089	HSP60 antibody	Rb pAb	Hu,Ms,Rat,Hm	WB, ICC/IF, IHC-P, ELISA
GTX628802	alpha Tubulin antibody [GT114]	Ms mAb	Hu,Ms,Rat,Zfsh,Dm	WB, ICC/IF, IHC-P, IHC-Fr, FACS
GTX112141	alpha Tubulin antibody	Rb pAb	Hu,Ms,Rat,Dm,Chk,C. elegans,Mosq,Tetrahymena	WB, ICC/IF, IHC-P, IHC-Fr
GTX101279	beta Tubulin antibody	Rb pAb	Hu,Ms,Rat,Hm	WB, ICC/IF, IHC-P
GTX629630	beta Actin antibody [GT5512]	Ms mAb	Hu,Ms,Rat,Zfsh,Yeast,Rb,Goat,Dm,Dog,Mk,Xenopus	WB, ICC/IF, IHC-P, IP
GTX109639	beta Actin antibody	Rb pAb	Hu,Ms,Rat,Yeast,Sheep,Dm,Cat,Dog,Hm,Chk,Pig,Mk,Worm C. elegans,C. albicans,E. coli,Hrs,Rice,Xenopus,Treeshrew,Plant	WB, ICC/IF, IHC-P, IHC-Fr, IP
GTX634166	TBP antibody [GT453]	Ms mAb	Hu	WB
GTX133204	TBP antibody	Rb pAb	Hu,Ms,Rat	WB, IHC-P
GTX627408	GAPDH antibody [GT239]	Ms mAb	Hu,Ms,Rat,Zfsh,Yeast,Dm,Pig,Mk,C. albicans,E. coli	WB, ICC/IF, IHC-P, EMSA
GTX100118	GAPDH antibody	Rb pAb	Hu,Ms,Rat,Zfsh,Yeast,Rb,Dm,Bov,Dog,Hm,Chk,Pig,Mk,Milkfish C. elegans, E. coli, Mosq, Nematode, Pika, Plant, Fish, Bacteria	WB, ICC/IF, IHC-P, IP
GTX114187	VDAC1 antibody [N1C2]	Rb pAb	Hu,Ms,Rat	WB, IHC-P
GTX100539	PCNA antibody	Rb pAb	Hu,Ms,Rat,Golden Syrian Hamster	WB, ICC/IF, IHC-P, IHC-Fr, IP, FISH, IHC
GTX628901	COX4 antibody [GT854]	Ms mAb	Hu,Ms,Rat	WB, ICC/IF, IHC-P
GTX114330	COX4 antibody	Rb pAb	Hu,Ms,Rat	WB, ICC/IF, IHC-P, IHC-Fr
GTX632582	Cofilin 1 antibody [GT217]	Ms mAb	Hu,Ms,Rat	WB, ICC/IF, IHC-P, IP
GTX102156	Cofilin 1 antibody	Rb pAb	Hu,Ms,Rat	WB, ICC/IF, IHC-P, IHC-Fr
GTX104698	Cyclophilin A antibody [C1C3]	Rb pAb	Hu,Ms,Rat,Hm	WB, ICC/IF, IHC-P
GTX122148	Histone H3 antibody	Rb pAb	Hu,Ms,Rat,Dm,Pig,Mk,Fungi,Golden Syrian Hamster,Rice	WB, ICC/IF, IHC-P, IP, ChIP assay, IHC
GTX633691	Cytochrome C antibody [GT577]	Ms mAb	Hu,Ms,Rat	WB, IHC-P
GTX108585	Cytochrome C antibody	Rb pAb	Hu,Ms,Rat	WB, IHC-P, IHC-Fr

GeneTex

International
USA

Tel: 866.3.6208988
Tel: 1.949.553.1900

Toll-free: 1.877.436.3839

www.genetex.com

PD-L001-220926