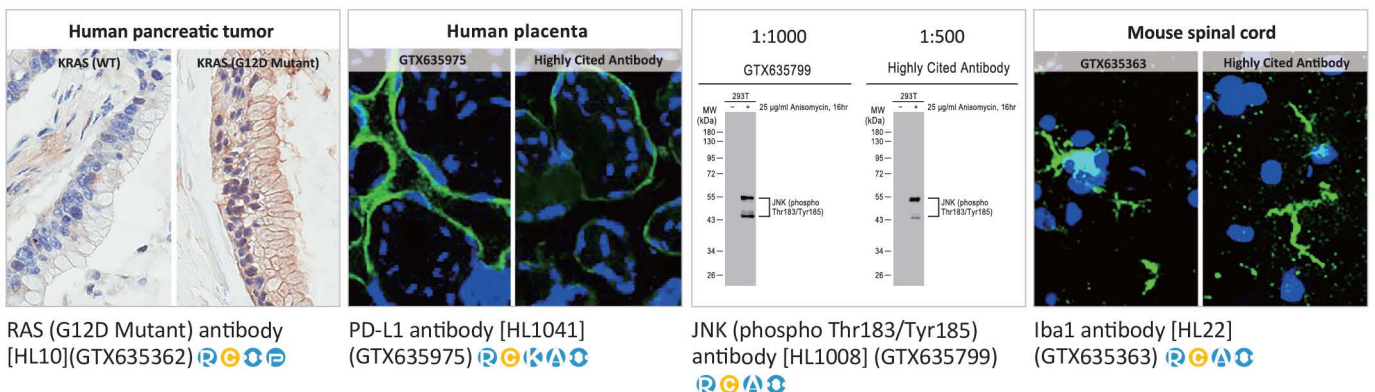
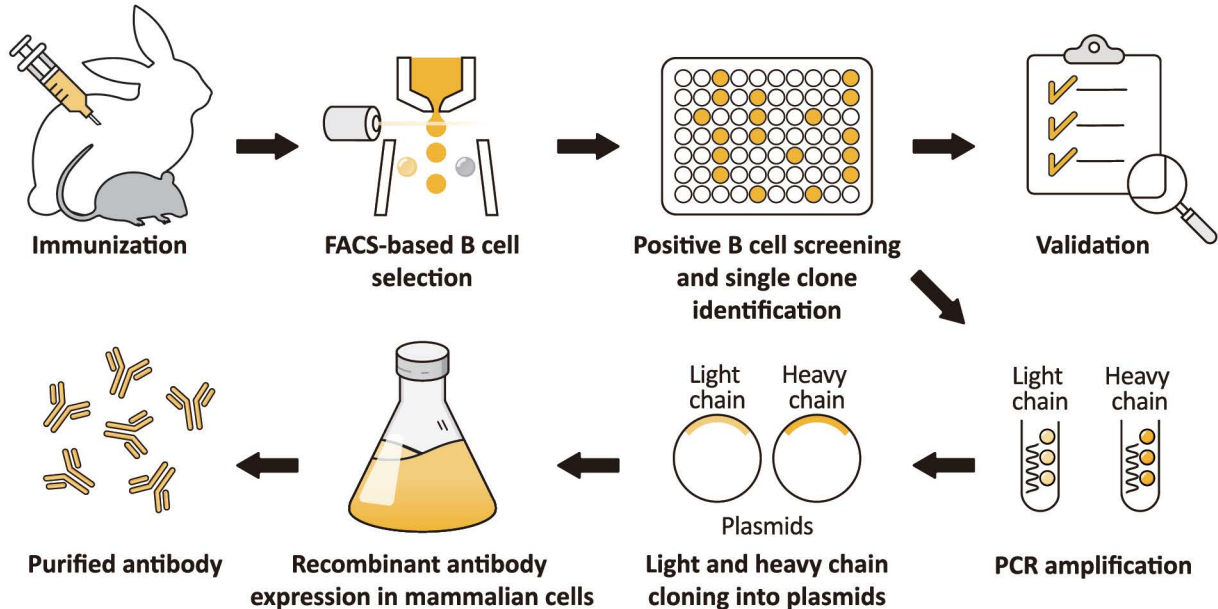




A recombinant antibody (rAb) is generated from the cloned, *in vitro*-expressed heavy and light chains of a selected monoclonal antibody obtained through classical hybridoma methodology, display strategies alone or in combination, sorted single B cells from immunized animals, or by one of many other techniques. The fact that it is cloned means the rAb is defined by its primary sequence, which can be engineered to optimize affinity and be expressed in different binder formats. The numerous advantages of rAbs have been well-documented, with consistency of performance being of paramount significance.

GeneTex's rAb protocol employs a multi-parameter FACS-based approach to isolate antigen-specific IgG⁺ memory B cells from an immunized animal, with subsequent cloning of the antibody variable-region genes into an IgG backbone and expression in mammalian cells. This protocol is very rapid and can be completed in weeks, and also affords the opportunity to identify antibodies with diverse capabilities in various applications. Importantly, it allows cloning of the heavy and light chains from the same B cell, thereby preserving natural pairing. And once cloned, the supply of a given rAb is inexhaustible with exceptional reproducibility.

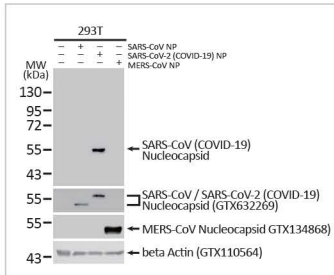
Recombinant Antibodies



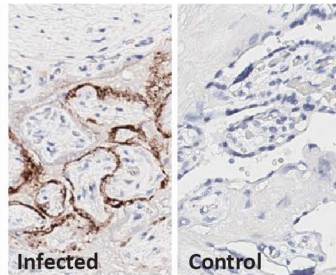
SARS-CoV-2 Research

Cat. No.	Product Name	Clonality	Applications
GTX635654	SARS-CoV-2 (COVID-19) Spike S1 antibody [HL6]	Rec Rb mAb	WB, ICC/IF, IHC-P, FACS, ELISA, Sandwich ELISA, IHC-P (cell pellet)
GTX635679	SARS-CoV-2 (COVID-19) Nucleocapsid antibody [HL344]	Rec Rb mAb	WB, ICC/IF, IHC-P, IHC-Fr, ELISA, Sandwich ELISA, IHC-P (cell pellet)
GTX635686	SARS-CoV-2 (COVID-19) Nucleocapsid antibody [HL448]	Rec Rb mAb	WB, ICC/IF, IHC-P, ELISA, Lateral Flow, Sandwich ELISA, IHC-P (cell pellet)
GTX635689	SARS-CoV-2 (COVID-19) Nucleocapsid antibody [HL5511]	Rec Rb mAb	WB, ICC/IF, ELISA, Lateral Flow, Sandwich ELISA, IHC-P (cell pellet)
GTX635693	SARS-CoV-2 (COVID-19) Spike S2 antibody [HL237]	Rec Rb mAb	WB, ICC/IF, ELISA, Sandwich ELISA, IHC-P (cell pellet)
GTX635791	SARS-CoV-2 (COVID-19) Spike RBD antibody [HL1002]	Rec Rb mAb	ELISA, Lateral Flow, Neutralizing/Inhibition, Sandwich ELISA
GTX635792	SARS-CoV-2 (COVID-19) Spike RBD antibody [HL1003]	Rec Rb mAb	ICC/IF, ELISA, Neutralizing/Inhibition, Sandwich ELISA
GTX635807	SARS-CoV-2 (COVID-19) Spike RBD antibody [HL1014]	Rec Rb mAb	ICC/IF, ELISA, Sandwich ELISA
GTX635911	SARS-CoV-2 (COVID-19) Spike S2 / S2' antibody [HL1039]	Rec Rb mAb	WB, ICC/IF, ELISA, Sandwich ELISA, IHC-P (cell pellet)
GTX636246	SARS-CoV-2 (COVID-19) Membrane antibody [HL1088]	Rec Rb mAb	WB, ICC/IF
GTX636719	SARS-CoV-2 (COVID-19) nsp7 antibody [HL1301]	Rec Rb mAb	WB, ICC/IF, IHC-P (cell pellet)
GTX636811	SARS-CoV-2 (COVID-19) nsp2 antibody [HL1371]	Rec Rb mAb	WB, ICC/IF
GTX636819	SARS-CoV-2 (COVID-19) nsp10 antibody [HL1379]	Rec Rb mAb	WB, ICC/IF
GTX636839	SARS-CoV-2 (COVID-19) nsp9 antibody [HL1399]	Rec Rb mAb	WB, ICC/IF, IHC-P (cell pellet)
GTX636901	SARS-CoV-2 (COVID-19) nsp1 antibody [HL1435]	Rec Rb mAb	WB
GTX636915	SARS-CoV-2 (COVID-19) Envelope antibody [HL1443]	Rec Rb mAb	WB, ICC/IF
GTX636916	SARS-CoV-2 (COVID-19) nsp12 / RdRP antibody [HL1444]	Rec Rb mAb	WB, ICC/IF, IHC-P (cell pellet)
GTX636917	SARS-CoV-2 (COVID-19) nsp15 antibody [HL1445]	Rec Rb mAb	WB, ICC/IF, IHC-P (cell pellet)
GTX636925	SARS-CoV-2 (COVID-19) ORF7b antibody [HL1453]	Rec Rb mAb	WB, ICC/IF
GTX636997	SARS-CoV-2 (COVID-19) nsp8 antibody [HL1523]	Rec Rb mAb	WB, ICC/IF

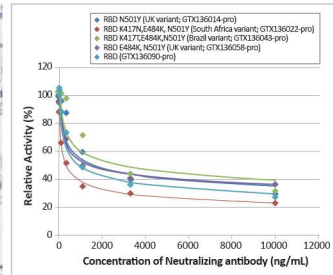
Neutralization Assay



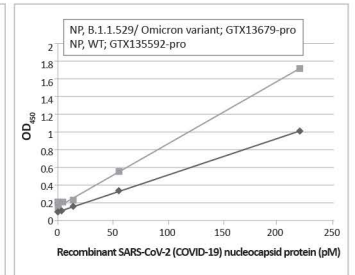
SARS-CoV-2 (COVID-19) Nucleocapsid antibody [HL344] (GTX635679)



SARS-CoV-2 (COVID-19) Spike S1 antibody [HL6] (GTX635654)



SARS-CoV-2 (COVID-19) Spike RBD antibody [HL1002] (GTX635791)

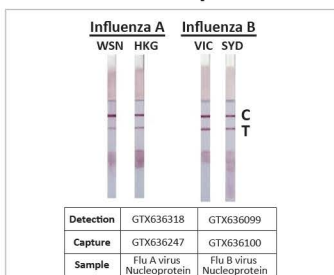


SARS-CoV-2 (COVID-19) Nucleocapsid antibody [HL448] (GTX635686)

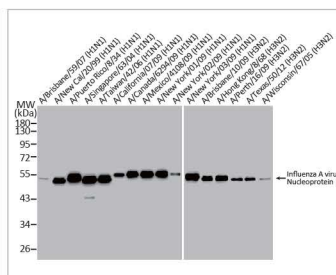
Influenza Virus Research

Cat. No.	Product Name	Clonality	Applications
GTX636199	Influenza A virus Nucleoprotein antibody [HL1078]	Rec Rb mAb	WB, ICC/IF, ELISA, Lateral Flow, Sandwich ELISA
GTX636247	Influenza A virus Nucleoprotein antibody [HL1089]	Rec Rb mAb	WB, ICC/IF, ELISA, Lateral Flow, Sandwich ELISA, IHC-P (cell pellet)
GTX636318	Influenza A virus Nucleoprotein antibody [HL1103]	Rec Rb mAb	WB, ICC/IF, ELISA, Lateral Flow, Sandwich ELISA, IHC-P (cell pellet)
GTX636099	Influenza B virus Nucleoprotein antibody [HL1068]	Rec Rb mAb	WB, ICC/IF, ELISA, Lateral Flow, Sandwich ELISA
GTX636100	Influenza B virus Nucleoprotein antibody [HL1069]	Rec Rb mAb	WB, ICC/IF, ELISA, Lateral Flow, Sandwich ELISA
GTX636194	Influenza B virus Nucleoprotein antibody [HL1073]	Rec Rb mAb	WB, ICC/IF, ELISA, Lateral Flow, Sandwich ELISA

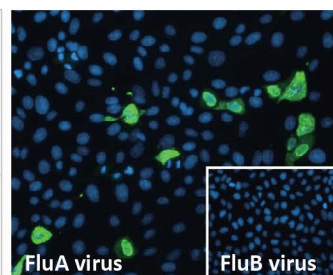
Lateral Flow Assay



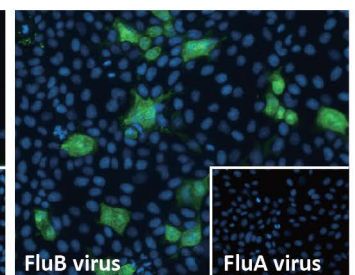
Influenza A virus Nucleoprotein antibody [HL1089] (GTX636247)



Influenza A virus Nucleoprotein antibody [HL1103] (GTX636318)



Influenza A virus Nucleoprotein antibody [HL1103] (GTX636318)



Influenza B virus Nucleoprotein antibody [HL1069] (GTX636100)

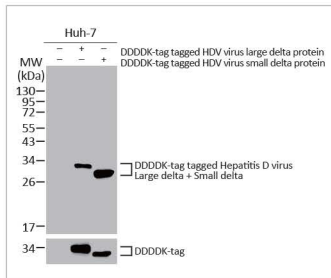
Hepatitis D Virus Research

Cat. No.	Product Name	Clonality	Applications
GTX636028	Hepatitis D virus Large delta + Small delta protein antibody [HL1053]	Rec Rb mAb	WB
GTX636026	Hepatitis D virus Large delta protein antibody [HL1051]	Rec Rb mAb	WB

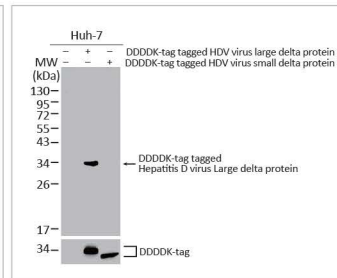
African Swine Fever Virus Research

Cat. No.	Product Name	Clonality	Applications
GTX636701	ASFV p54 antibody [HL1287]	Rec Rb mAb	WB, ELISA, Lateral Flow, Sandwich ELISA
GTX636703	ASFV p54 antibody [HL1289]	Rec Rb mAb	WB, ELISA, Lateral Flow, Sandwich ELISA

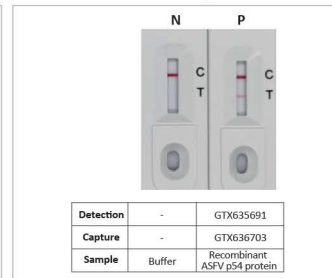
Lateral Flow Assay



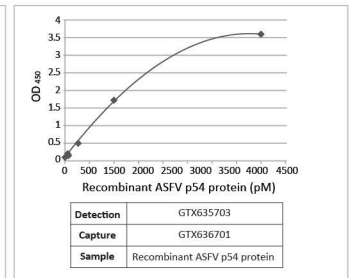
Hepatitis D virus Large delta + Small delta protein antibody [HL1053] (GTX636028)



Hepatitis D virus Large delta protein antibody [HL1051] (GTX636026)



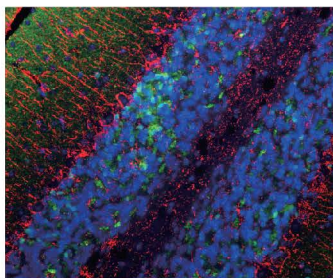
ASFV p54 antibody [HL1289] (GTX636703) (



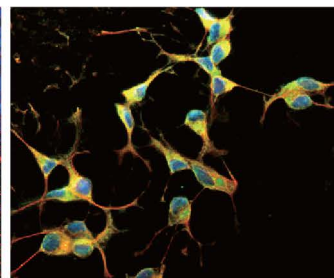
ASFV p54 antibody [HL1289] (GTX636703) (

Neuroscience Research

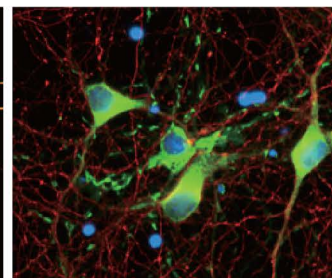
Cat. No.	Product Name	Clonality	Applications
GTX636298	AChE antibody [HL1102]	Rec Rb mAb	WB, ICC/IF, IHC-P
GTX636641	alpha Synuclein antibody [HL1242]	Rec Rb mAb	WB, IHC-P
GTX636642	alpha Synuclein antibody [HL1243]	Rec Rb mAb	WB, IHC-P
GTX636322	DDR2 antibody [HL1107]	Rec Rb mAb	WB, IHC-P
GTX636952	Dopamine Receptor D2 antibody [HL1478]	Rec Rb mAb	WB, ICC/IF, IHC-P
GTX637063	Dopamine Receptor D2 antibody [HL1584]	Rec Rb mAb	WB, IHC-P
GTX636725	GFAP antibody [HL1307]	Rec Rb mAb	WB, IHC-P, IHC-Fr
GTX635875	GRK2 (phospho Ser670) antibody [HL1035]	Rec Rb mAb	WB, IHC-P
GTX637038	GRK2 antibody [HL1562]	Rec Rb mAb	WB, IHC-P
GTX635363	Iba1 antibody [HL22]	Rec Rb mAb	WB, ICC/IF, IHC-P, IHC-Fr
GTX636887	IL1 beta antibody [HL1421]	Rec Rb mAb	WB, ICC/IF, IHC-P
GTX635873	Myelin basic protein antibody [HL1033]	Rec Rb mAb	WB, ICC/IF, IHC-P
GTX636104	OLIG2 antibody [HL1072]	Rec Rb mAb	ICC/IF, IHC-P, IHC-Fr
GTX636800	StAR antibody [HL1360]	Rec Rb mAb	WB, IHC-P



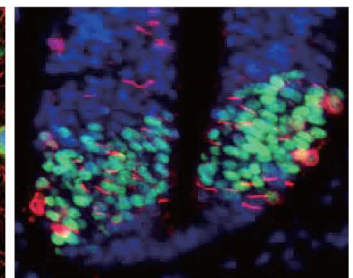
alpha Synuclein antibody [HL1243] (GTX636642) (



Dopamine Receptor D2 antibody [HL1478] (GTX636952) (



Myelin basic protein antibody [HL1033] (GTX635873) (





















































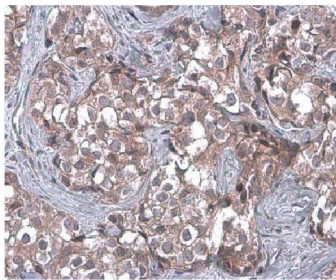
OLIG2 antibody [HL1072] (GTX636104) (

Recombinant Citation Support KO/KD Validation Comparable Abs Orthogonal Validation Protein Overexpression

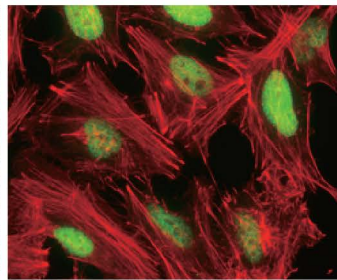



Highlighted Products

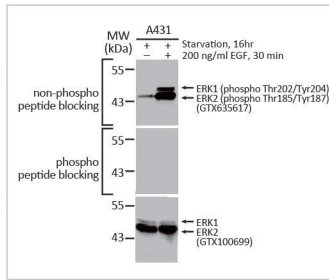
Cat. No.	Product Name	Clonality	Applications
   GTX636265	ACE2 antibody [HL1092]	Rec Rb mAb	WB, ICC/IF, IHC-P
  GTX636416	AKT1 antibody [HL1145]	Rec Rb mAb	WB
  GTX636963	Cardiac Troponin I antibody [HL1489]	Rec Rb mAb	WB, IHC-P
  GTX636810	Caspase 3 antibody [HL1370]	Rec Rb mAb	WB, IHC-P
   GTX635979	clAP1 antibody [HL1045]	Rec Rb mAb	WB, IHC-P
   GTX636283	CLOCK antibody [HL1099]	Rec Rb mAb	WB, ICC/IF
  GTX70141	DNA ligase I antibody [10H5]	Rec Ms mAb	WB, ICC/IF, IHC-P, IP
   GTX635617	ERK1 (phospho Thr202/Tyr204) + ERK2 (phospho Thr185/Tyr187) antibody [HL173]	Rec Rb mAb	WB, ICC/IF, IHC-P
  GTX636422	Glucocorticoid Receptor antibody [HL1151]	Rec Rb mAb	WB, ICC/IF, IHC-P
   GTX636658	Integrin beta 1 / CD29 antibody [HL1256]	Rec Rb mAb	WB, ICC/IF
   GTX635799	JNK (phospho Thr183/Tyr185) antibody [HL1008]	Rec Rb mAb	WB, IHC-P
  GTX636768	NEK7 antibody [HL1348]	Rec Rb mAb	WB, ICC/IF, IHC-P
   GTX635826	NRF2 antibody [HL1021]	Rec Rb mAb	WB, ICC/IF, IHC-P, PLA
  GTX635621	p70 S6K (phospho Thr421/Ser424) antibody [HL129]	Rec Rb mAb	WB, IHC-P
  GTX636805	PARP antibody [HL1365]	Rec Rb mAb	WB, ICC/IF
   GTX635975	PD-L1 antibody [HL1041]	Rec Rb mAb	WB, IHC-P
  GTX635362	RAS (G12D Mutant) antibody [HL10]	Rec Rb mAb	WB, ICC/IF, IHC-P
  GTX636411	Thrombospondin 2 antibody [HL1140]	Rec Rb mAb	WB, ICC/IF, IHC-P, ELISA, Sandwich ELISA
   GTX70255	TSG101 antibody [4A10]	Rec Ms mAb	WB, ICC/IF, IHC-P, FACS, IP, ELISA, EM, IHC, IHC (Free Floating)
   GTX636980	Vimentin antibody [HL1506]	Rec Rb mAb	WB, ICC/IF, IHC-P



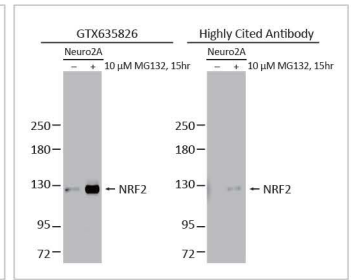
TSG101 antibody [4A10]
(GTX70255)   



DNA ligase I antibody [10H5]
(GTX70141) 






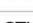






ERK1 (phospho Thr202/Tyr204) + ERK2 (phospho Thr185/Tyr187) antibody [HL173] (GTX635617)
  



NRF2 antibody [HL1021]
(GTX635826)   

Respiratory Syncytial Virus Research

Cat. No.	Product Name	Clonality	Applications
  GTX636648	Respiratory Syncytial virus Nucleoprotein antibody [HL1246]	Rec Rb mAb	WB, ICC/IF, IP, ELISA, Lateral Flow, Sandwich ELISA
 GTX636649	Respiratory Syncytial virus Nucleoprotein antibody [HL1247]	Rec Rb mAb	WB, IP, ELISA, Lateral Flow, Sandwich ELISA
   GTX636650	Respiratory Syncytial virus Nucleoprotein antibody [HL1248]	Rec Rb mAb	WB, ICC/IF, IP, ELISA, Lateral Flow, Sandwich ELISA
 GTX636709	Respiratory Syncytial virus Nucleoprotein antibody [HL1295]	Rec Rb mAb	WB, ICC/IF, ELISA, Sandwich ELISA
 GTX636710	Respiratory Syncytial virus Nucleoprotein antibody [HL1296]	Rec Rb mAb	WB, ICC/IF, ELISA, Sandwich ELISA
 GTX636711	Respiratory Syncytial virus type A Nucleoprotein antibody [HL1297]	Rec Rb mAb	WB, ICC/IF, IP, ELISA, Sandwich ELISA
 GTX637381	Respiratory Syncytial virus type B G protein antibody [HL1733]	Rec Rb mAb	WB, ICC/IF

 Recombinant

 Citation Support

 KO/KD Validation

 Comparable Abs

 Orthogonal Validation

 Protein Overexpression