

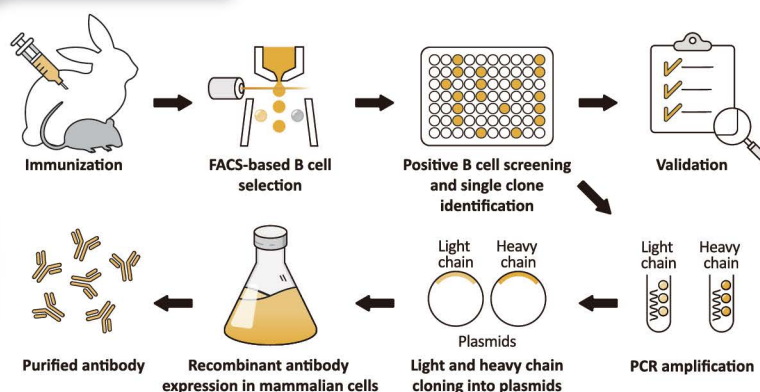
# Antibodies for Immunology Research


[www.genetex.com](http://www.genetex.com)

GeneTex is a multinational antibody manufacturing company dedicated to creating reagents for biomedical research, assay development, and *in vitro* diagnostics. The company operates state-of-the-art facilities to provide products generated through refined development and quality assurance programs, international collaboration with leading researchers, and scrupulous scientific rigor. GeneTex's antibodies and reagents are manufactured to standards outlined in Quality Management Systems (QMS) ISO 9001:2015 and ISO 13485:2016 and are supported by comprehensive validation and customer service.

To enhance its already extensive catalog of conventional polyclonal and monoclonal antibodies, GeneTex is now focusing its production on the creation of highly validated recombinant rabbit monoclonal antibodies with consistent specificity and performance. Though these recombinant antibodies will be directed against targets relevant to all fields of research, GeneTex has particular interest in developing outstanding reagents to support immunology research. The purpose of this brochure is to introduce you to many of our best immunology research products.

## Recombinant Rabbit Antibody Production Workflow



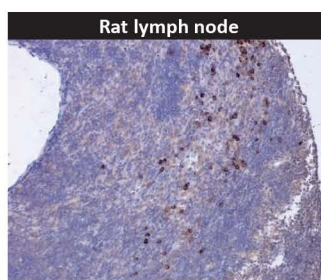
 KO/KD Validation
  Comparable Abs
  IP/MS Analysis

 Orthogonal Validation
  Protein Overexpression

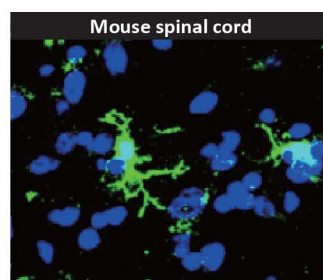
 Citation Support




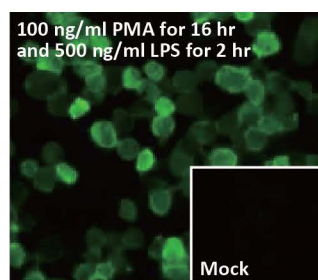
## Featured Recombinant Antibodies for Immunology Research




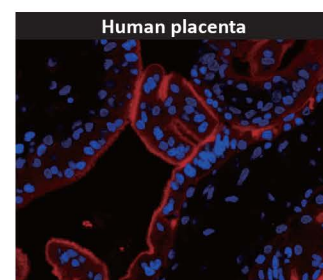
CXCL16 antibody [GT516]  
(GTX632502) 




Iba1 antibody [HL22]  
(GTX635363) 

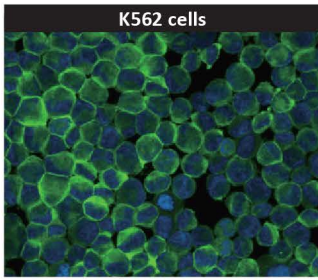


IL1 beta antibody [HL1421]  
(GTX636887) 

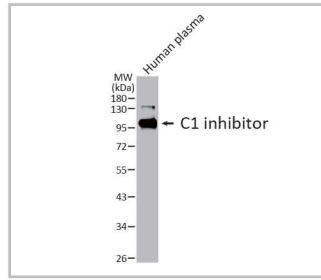


PD-L1 antibody [HL1041]  
(GTX635975) 

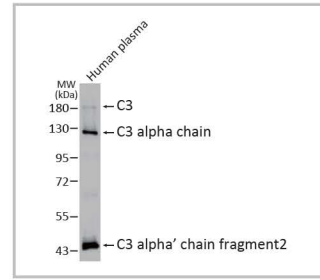
## Featured Recombinant Antibodies for Immunology Research



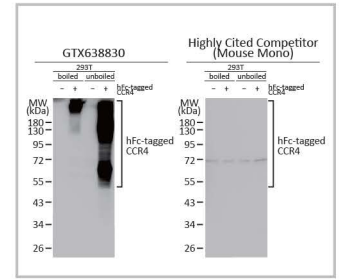
**BTK antibody [HL1803]**  
(GTX637455) [R](#) [K](#) [K](#)



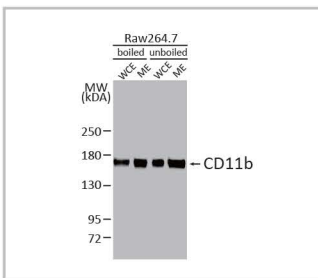
**C1 inhibitor antibody [HL1196]**  
(GTX636508) [R](#)



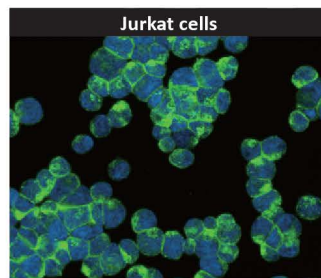
**C3 antibody [HL1643]**  
(GTX637224) [R](#)



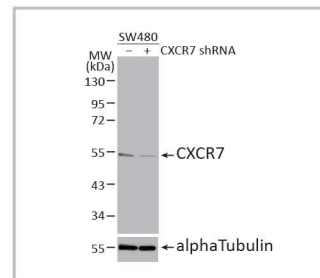
**CCR4 antibody [HL2481]**  
(GTX638830) [R](#) [A](#) [K](#) [K](#)



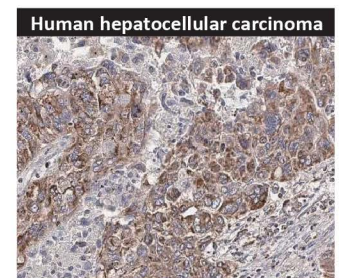
**CD11b antibody [HL3097]**  
(GTX640543) [R](#) [K](#)



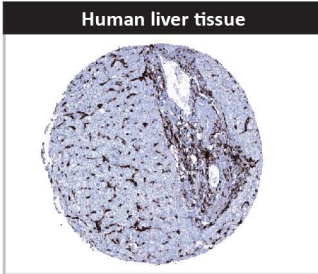
**CD81 antibody [HL1666]**  
(GTX637264) [R](#) [K](#) [K](#)



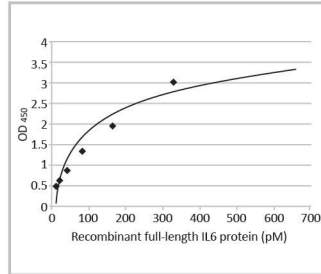
**CXCR7 antibody [HL2189]**  
(GTX638193) [R](#) [K](#) [K](#) [K](#) [K](#) [K](#)



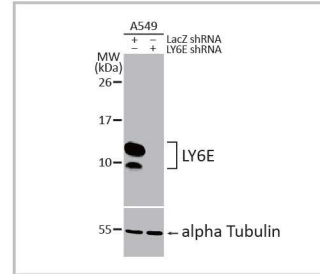
**HCK antibody [HL1673]**  
(GTX637272) [R](#)



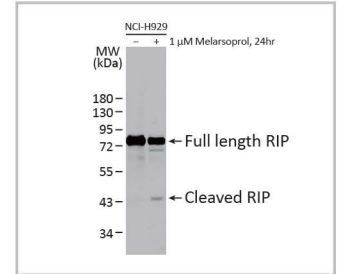
**HLA-DRB1 antibody [MSVA-478R]**  
HistoMAX™ (GTX04457) [R](#) [K](#)



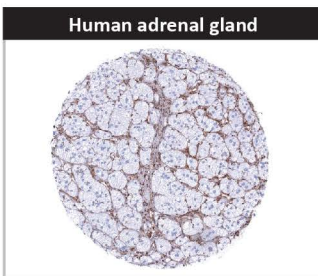
**IL6 antibody [HL2389]**  
(GTX638598) [R](#) [A](#) [K](#) [K](#)



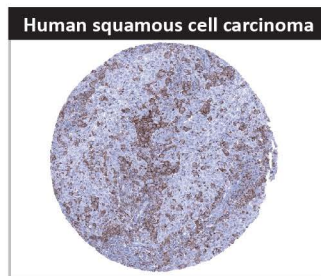
**LY6E antibody [HL1933]**  
(GTX637770) [R](#) [K](#) [K](#) [K](#)



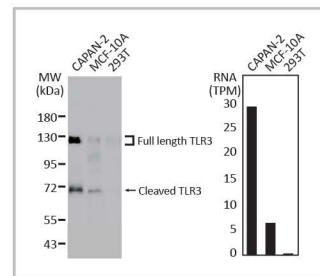
**RIP antibody [HL2250]**  
(GTX638299) [R](#) [K](#)



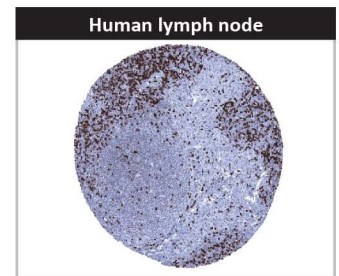
**STING antibody [MSVA-515M]**  
HistoMAX™ (GTX04484) [R](#) [K](#)



**TIM-3 antibody [MSVA-366R]**  
HistoMAX™ (GTX04440) [R](#) [K](#)



**TLR3 antibody [HL2314]**  
(GTX638477) [R](#) [K](#)



**ZAP70 antibody [MSVA-870R]**  
HistoMAX™ (GTX04441) [R](#) [K](#)

